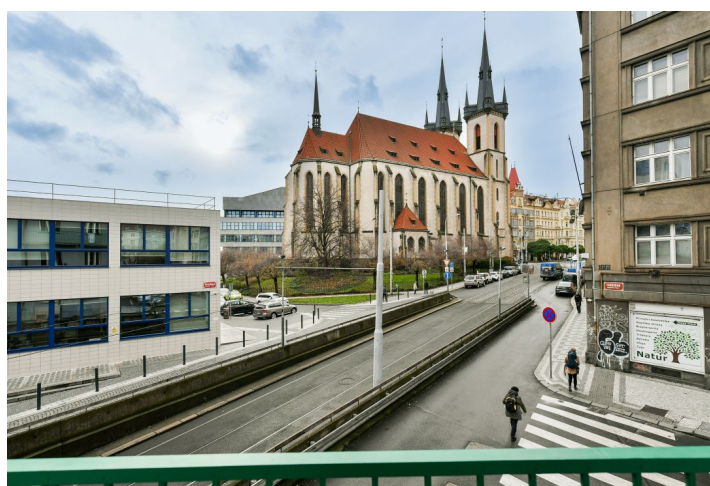
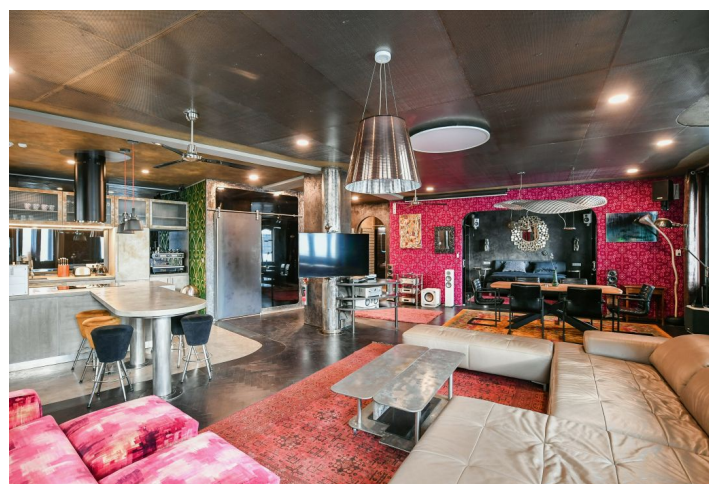
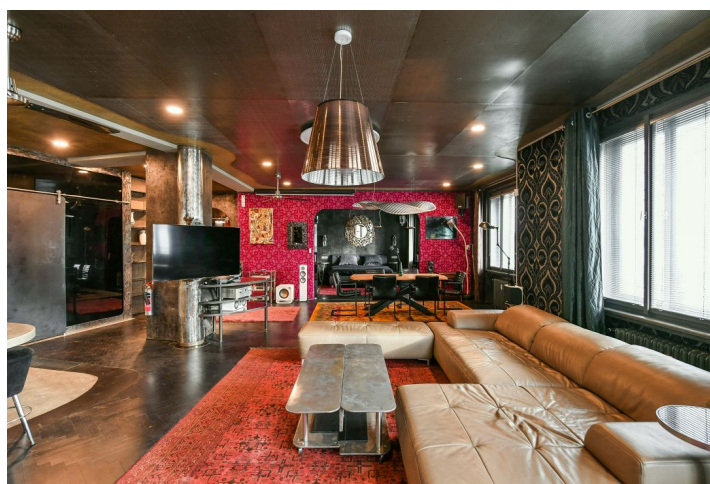




Apartment Studio (1+kk)

118 m², Prague 7, Holešovice, Antonínská

Rented





Apartment Studio (1+kk)

Rented

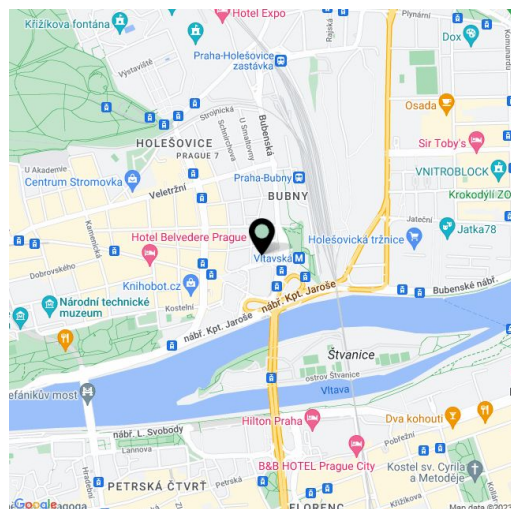
118 m², Prague 7, Holešovice, Antonínská

Total area	130 m²
Floor area*	118 m²
Loggia	12 m²
Parking	-
Cellar	-
Service price	Monthly deposit for service charges, water and heating CZK 7,500 for 2 persons. Electricity is billed separately.
PENB	G
Reference number	43932
Available from	Immediately

This unique, premium renovated fully furnished designer apartment with 2 bathrooms and 2 balconies is on the 1st floor of a completely refurbished corner Functionalist building with an elevator. Conveniently located in a lively Prague 7 neighborhood just moments from the Vltavská metro station and many tram lines, near the Vltava riverbank, and a few minutes' walk to the Stromovka and Letná parks. The city center is also accessible on foot. Complete amenities and services are available within easy reach.

The spacious interior features a living room with a fully fitted open space kitchen and **balcony**, a partially separate bedroom with a second **balcony**, a bathroom (**massage shower**, bathtub, bidet, toilet), a second bathroom (**massage shower**, toilet), and an entrance hall.

High-standard custom-made equipment, hardwood parquet floors, tiles, security entry door, built-in wardrobes, washer/dryer, dishwasher, induction cooktop, combination oven, coffee maker, plate warming drawer, wine fridge, two fridges, TV, possible to connect alarm, **full acoustic insulation**. Can be unfurnished.



* Size of the unit according to the Housing Act.

The area consists of the sum total of the internal area of every room.