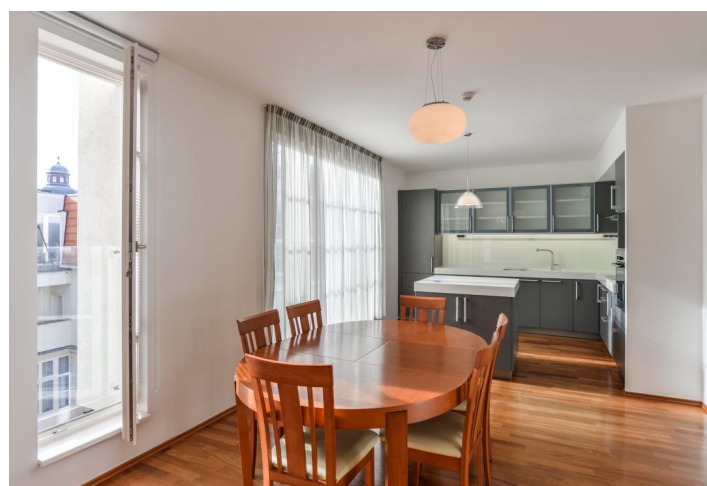




Apartment Three-bedroom (4+kk)

Rented

150 m², Prague 1, Nové Město, Senovážné náměstí





Apartment Three-bedroom (4+kk)

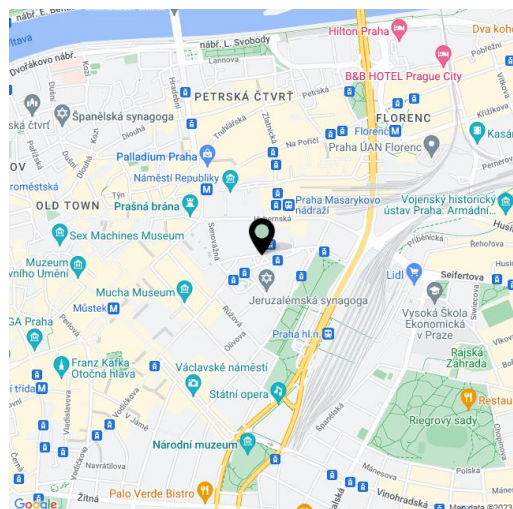
Rented150 m², Prague 1, Nové Město, Senovážné náměstí

Total area	209 m ²
Floor area*	150 m ²
Terrace	59 m ²
Parking	Parking available.
Garage	Yes
Cellar	Yes
PENB	G
Reference number	6312
Available from	Immediately

Top quality Prague rental. This comfortable 3-bedroom 3-bathroom split-level flat with 2 terraces is situated in a newly restored 19th-century Neo-Classicalist palace with 24-hour reception and parking. Located just a three minute walk to Wenceslas Square and a ten minute walk to the Old Town Square. 5th and 6th floor with entrance on both floors and a lift.

The upper floor includes a spacious entry hall with built-in wardrobes, living room with terrace access, fully fitted open plan kitchen, and shower bathroom with sink and toilet with bidet shower. Downstairs are the three bedrooms - master bedroom with built-in wardrobes and full en-suite bathroom, and the third bathroom (shower, sink, toilet with bidet shower). There is a spacious roof terrace overlooking the typical Prague rooftops and the Petřín hill.

Parquet floors throughout, ample storage space, air-conditioning, security doors, washer, dryer, dishwasher, microwave, video entry phone, alarm, telephone line/Internet, satellite TV connection. Basement storage. One parking space included, second one possible for an additional fee. Trams steps away, metro a few minute walk. Deposit for common building charges and utilities CZK 12,500/month.



* Area of the unit according to the Civil Code. The area consists of the sum total area of the entire unit bounded by perimeter walls.