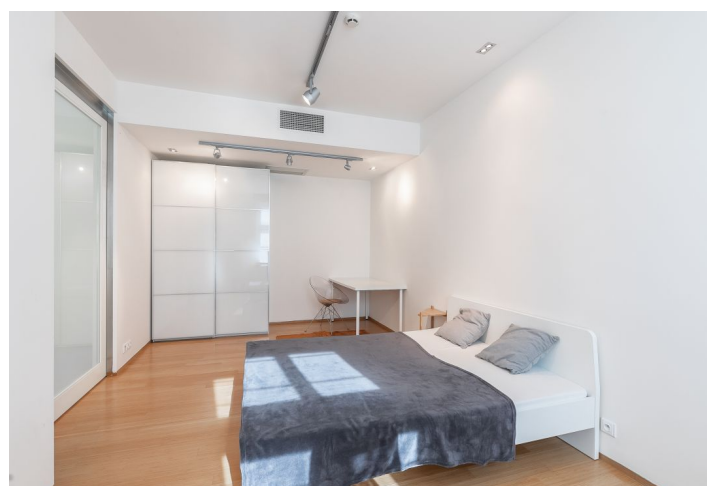




Apartment Two-bedroom (3+kk)

Rented

106 m², Prague 1, Nové Město, Truhlářská





Apartment Two-bedroom (3+kk)

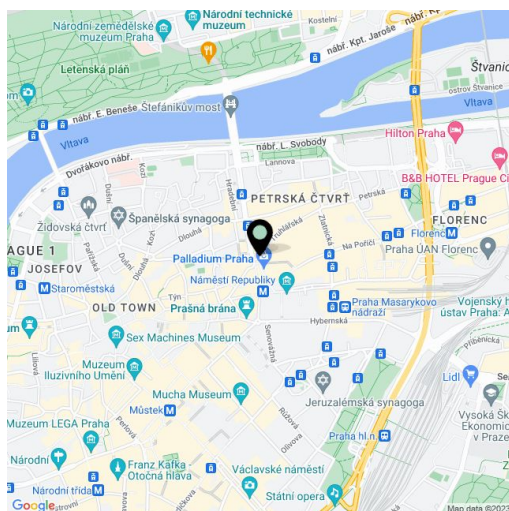
Rented106 m², Prague 1, Nové Město, Truhlářská

| | |
|------------------|-------------------------|
| Total area | 106 m ² |
| Parking | Parking space included. |
| Garage | Yes |
| Cellar | - |
| PENB | G |
| Reference number | 7864 |
| Available from | Immediately |

Centrally located, this fully refurbished and furnished 2-bedroom apartment on the 4th floor of a classic late 19th century building, superbly renovated with attention to detail and retrofitted with an elevator, offers modern living, high-quality finishes, and a lively central location. The apartment is situated on a quiet street mere steps from Náměstí Republiky Square with the Palladium shopping mall, tram stops, and a metro station. A ten-minute walk to Old Town as well as Wenceslas Square.

The interior features a spacious entrance hall, a bright living room with a **fireplace** and a fully fitted open plan kitchen, a master bedroom with an en-suite bathroom (bathtub, walk-in shower, sink, toilet), a second bedroom, and a guest toilet with sink.

Air-conditioning, security entry door, **bamboo flooring**, heated tiles in the bathroom, **marble kitchen counter top**, central gas heating, sliding glass interior doors, washer, dryer, dishwasher, microwave oven, TV, WiFi, alarm that can be connected to a security agency, video entry phone, camera system in the building. The apartment can be rented without furniture or for a short term of six months at a higher rent. A parking space is included. Common building charges, water, heating CZK 7,000/month. Gas and electricity will be transferred to the tenant. Available from October 2022.



* Area of the unit according to the Civil Code. The area consists of the sum total area of the entire unit bounded by perimeter walls.