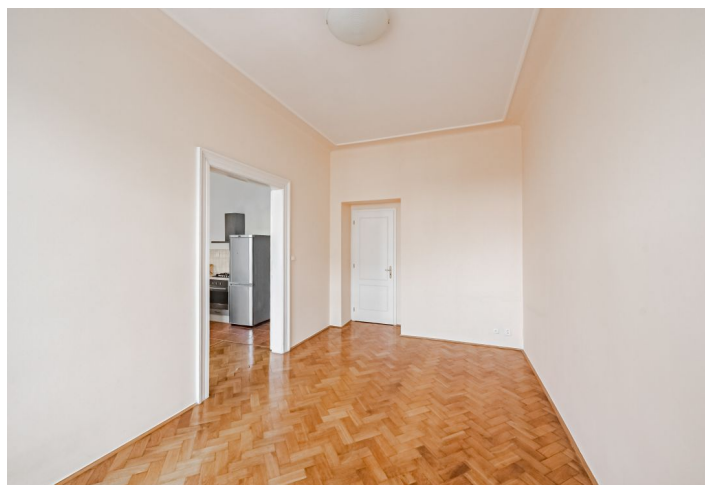




Apartment Two-bedroom (3+kk)

Rented

70 m², Prague 7, Holešovice, Nad Štolou





Apartment Two-bedroom (3+kk)

Rented

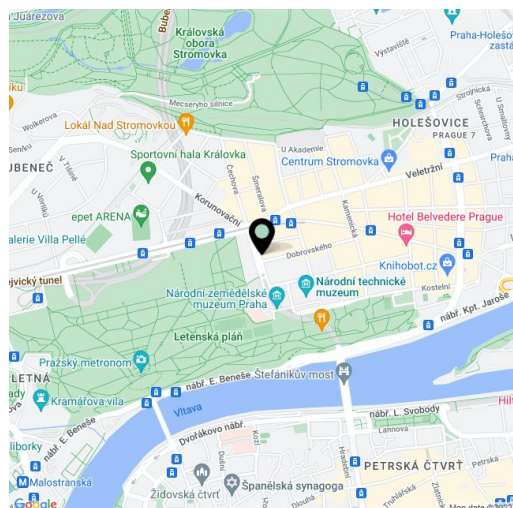
70 m², Prague 7, Holešovice, Nad Štolou

Total area	70 m ²
Parking	-
Cellar	-
Service price	Monthly deposit for building charges and water CZK 1,300 for 1 person, another person CZK 1,100. Utilities are paid separately.
PENB	G
Reference number	100257
Available from	Immediately

This sunny, fully renovated 2-bedroom 2-bathroom apartment with views of popular Letná Park is on the second floor of a completely refurbished Art Nouveau building with a new elevator and a pergola in the back yard. Located directly opposite a park, a two min. walk from Letenské Square with quick tram connections to the Hradčanská and Vltavská metro stations, and within walking distance of the historic city center, Prague Castle, and Stromovka Park. A trendy area with full amenities, numerous restaurants, bistros, and cafes, plus a wide range of opportunities for sports and relaxation, within quick reach of the airport and international schools in Prague 6.

This beautifully designed apartment features a living room with a fully fitted kitchen and dining area, 2 bedrooms (one with a **walk-in closet** and built-in storage space), 2 bathrooms (one with a bathtub, bidet, and toilet, the other with a shower), an additional separate toilet, and an entrance hall.

Preserved original architectural details, large windows, high ceilings, **hardwood oak parquet floors**, high-quality Italian tiles, independent gas heating, washer, dishwasher, UPC cable TV connection. Available from February 2023.



* Area of the unit according to the Civil Code. The area consists of the sum total area of the entire unit bounded by perimeter walls.



Apartment Two-bedroom (3+kk)

Rented

70 m², Prague 7, Holešovice, Nad Štolou

