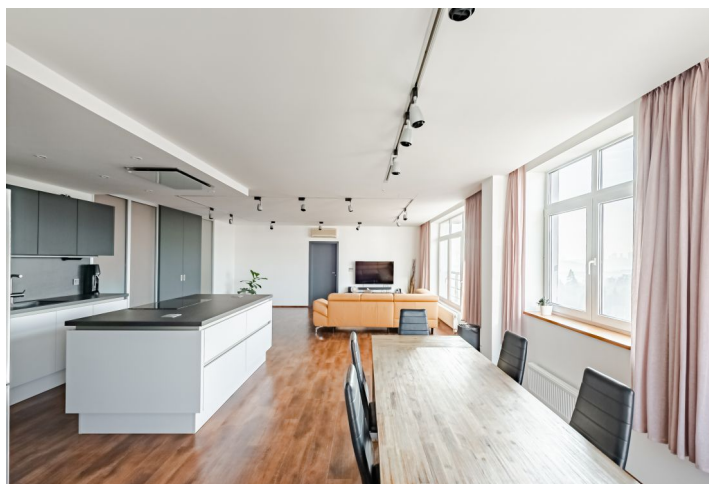




Apartment Three-bedroom (4+kk)

Sold

176 m², Prague 10, Strašnice, Vinohradská





Apartment Three-bedroom (4+kk)

Sold176 m², Prague 10, Strašnice, Vinohradská

Total area	176 m ²
Parking	-
Cellar	Yes
PENB	C
Reference number	100263

This super spacious and bright apartment with a bird's-eye view of Prague—a more than 170-meter air-conditioned unit is located in a high-rise building with a non-stop reception and security in Prague 10 - Strašnice within reach of a full range of services and parks.

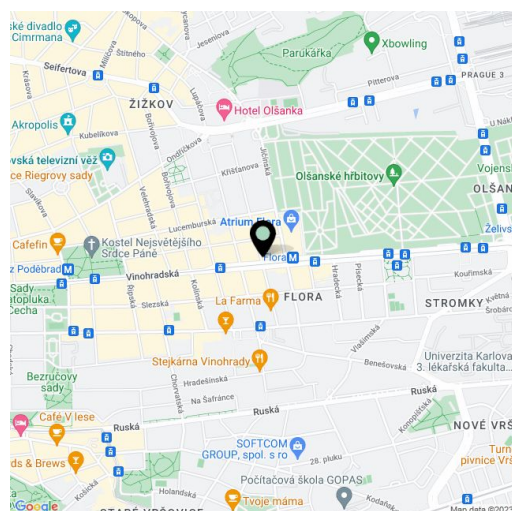
The apartment on the 14th floor, facing south, west, and north, consists of a generously designed corner living room with an open plan kitchen and dining room, a master bedroom with a **walk-in wardrobe**, a work area, and access to a bathroom, another bedroom with an en-suite bathroom, a third room, a hallway, a central closet, and a vestibule.

Facilities include **air-conditioning**, a German kitchen with a **Neolith sintered stone** worktop and **AEG Mastery** appliances, an Apple home smart system to control the heating and part of the lighting, and wooden and vinyl floors. Large windows offer **unobstructed views** of the wide surroundings and let in **plenty of daylight**. The apartment includes a **cellar**. It is possible to purchase **2 garage spaces for CZK 1 000 000**. The building has a **24-hour reception**, a security guard, and a camera system that contributes to the safety of the residents.

A convenient location right next to a tram stop and near the Strašnická or Želivského metro stations. There is a restaurant, a cafe, or a bank branch in the complex, and a **children's playground** is right next to the building. There is also a kindergarten and elementary school nearby, as well as a sports field with **tennis courts**. The neighborhood is charming due to **several parks**; another large green space is being created nearby.

Floor area 175,52 m², cellar 4.2 m².

In addition to regular property viewings, we also offer real-time video viewings via WhatsApp, FaceTime, Messenger, Skype, and other apps.



* Size of the unit according to the Housing Act. The area consists of the sum total of the internal area of every room.