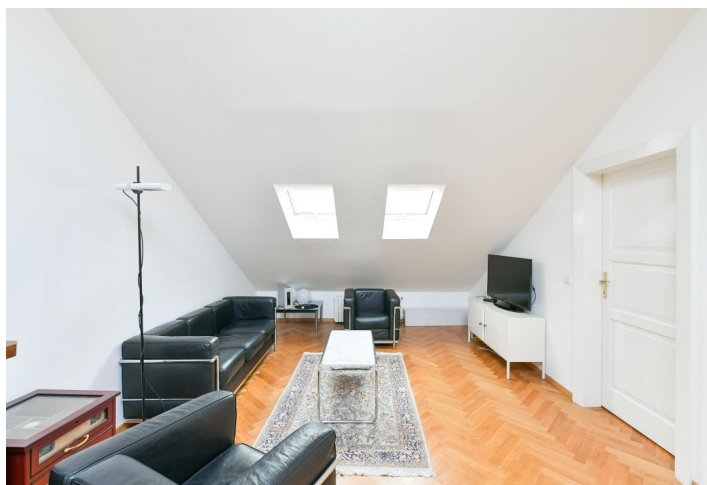




Apartment One-bedroom (2+kk)

€ 473 373 | CZK 12 000 000

66 m², Prague 1, Staré Město, Benediktská





Apartment One-bedroom (2+kk)

€ 473 373 | CZK 12 000 000

66 m², Prague 1, Staré Město, Benediktská

Total area	66 m ²
Parking	-
Cellar	-
Service price	3 212 CZK monthly
PENB	G
Reference number	100346

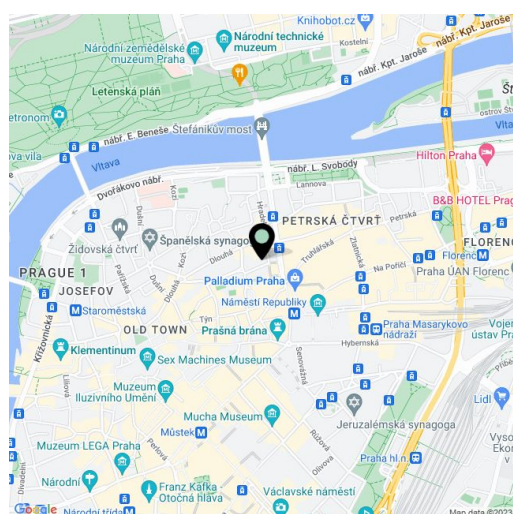
This recently reconstructed attic apartment is situated on the 5th floor of a classic brick building with an elevator. This nicely maintained apartment building is located in an attractive place on a side street near Republic Square in the very center of Prague.

The layout consists of a living room with a dining area and a hallway, a separate kitchen, 1 bedroom, and a bathroom (with a bathtub, toilet, and bidet).

The apartment **was approved in 2020**. Facilities include renovated wooden floors, new doors, and skylights. As part of the layout change in 2020, a new bathroom with heated tiles was built. Heating is by a gas boiler. The building is well-maintained and has a **modern elevator**.

The location makes it possible to have all services at your fingertips; there are 2 shopping centers in the immediate vicinity, many other shops, restaurants, cafes, and clubs, as well as **cinemas and theaters**. A metro station and tram stop are about a 2-minute walk from the building.

Floor area 66.06 m².



* Size of the unit according to the Housing Act.

The area consists of the sum total of the internal area of every room.



Apartment One-bedroom (2+kk)

€ 473 373 | CZK 12 000 000

66 m², Prague 1, Staré Město, Benediktská



Podlahová plocha podkrovi od 1200mm (obytná plocha podkrovi)			
101	Predsíň	2,16	
102	Obyvací pokoj	24,81	
103	Ložnice	16,62	
104	Kuchyně	5,68	
105	Koupelna	7,53	
			56,80 m ²

Podlahová plocha celého podkrovi			
101	Predsíň	2,16	
102	Obyvací pokoj	28,92	
103	Ložnice	21,77	
104	Kuchyně	5,68	
105	Koupelna	7,53	
			66,06 m ²