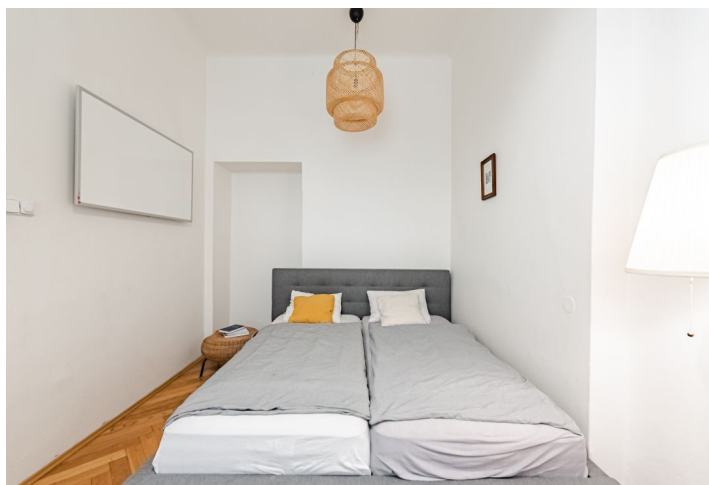




Apartment Two-bedroom (3+1)

Rented

96 m², Praha 1, Nové Město, Vojtěšská





Apartment Two-bedroom (3+1)

Rented

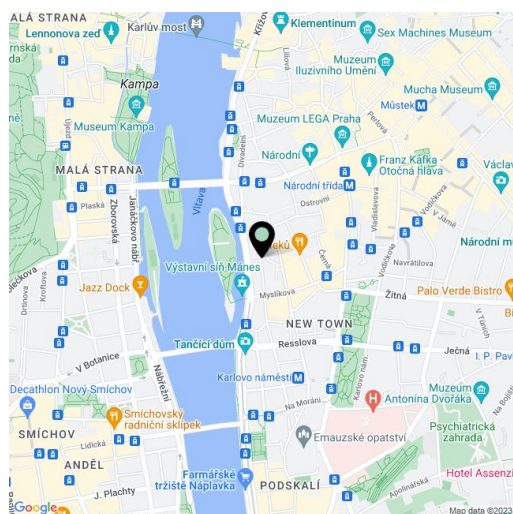
96 m², Praha 1, Nové Město, Vojtěšská

Total area	96 m ²
Parking	-
Cellar	-
Service price	Service charges and water: CZK 1,000/person/month. Electricity is billed separately.
Reference number	100390
Available from	Immediately

This 2-bedroom unfurnished apartment is on the first floor of a well-maintained traditional residential building with no elevator. Situated on a quiet street in the very city center, just a few steps from the Vltava riverbank, Žofín Island, and the National Theater. A prestigious location with many historic and cultural monuments plus full amenities incl. quality restaurants, bistros, and cafés. Within walking distance of the Karlovo náměstí and Národní třída metro stations.

The apartment offers a living room, a fully fitted kitchen with a dining area, 2 bedrooms, a shower room, a separate toilet, a **walk-in closet**, and an entrance hall.

Hardwood parquet floors, tiles, security entry door, large built-in wardrobe in one bedroom, **infrared heating panels**, washer/dryer, dishwasher, microwave oven. Available from February 2023 (or earlier).



* Area of the unit according to the Civil Code. The area consists of the sum total area of the entire unit bounded by perimeter walls.