



Apartment Three-bedroom (4+kk)

Rented

99 m², Prague 6, Veleslavín, Pod Dvorem





Apartment Three-bedroom (4+kk)

Rented

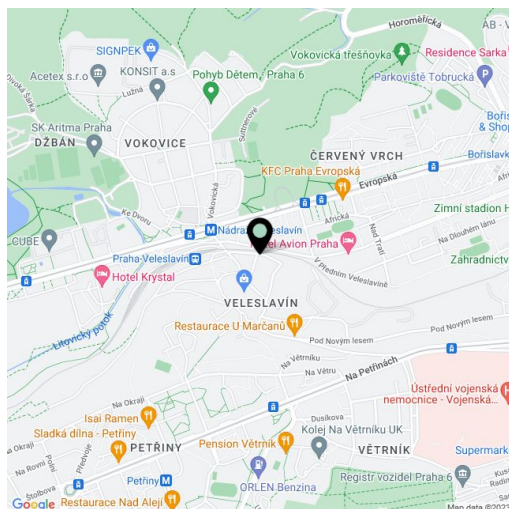
99 m², Prague 6, Veveslavín, Pod Dvorem

Total area	124 m ²
Floor area*	99 m ²
Balcony	6 m ²
Terrace	19 m ²
Parking	Garage parking.
Garage	Yes
Cellar	Yes
Service price	Monthly deposit for common building charges, water, heating and electricity incl. Internet CZK 7,000/month.
PENB	B
Reference number	100436
Available from	Immediately

This fully furnished 3-bedroom 2-bathroom apartment with a terrace and a balcony, on the first floor in a contemporary residential project with underground parking. Situated near the Chateau Veveslavín, Divoká Šárka nature preserve and the Hvězda Park, on the border of Veveslavín and Ořechovka Prague residential areas, with quick access to the city center and amenities, with Nádraží Veveslavín metro station and trams just a few min. walk from the building. Conveniently located for the airport and international schools in Prague 6.

The interior features a living room with a fully fitted open plan kitchen, a master bedroom with an en-suite bathroom (walk-in shower, toilet) and a small walk-in closet, two additional bedrooms, a family bathroom (bathtub, toilet), a guest toilet, and an entry hall with built-in wardrobes.

Green views, new furnishings and equipment, wooden floors, security entry door, built-in storage, French windows, blinds, washer/dryer, dishwasher, microwave oven, basic dishes, iron and ironing board, vacuum cleaner, two TV sets, video entry phone, basement storage unit. Nicely landscaped green courtyard with a playground for children available. One garage parking space is included.



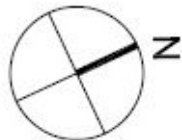
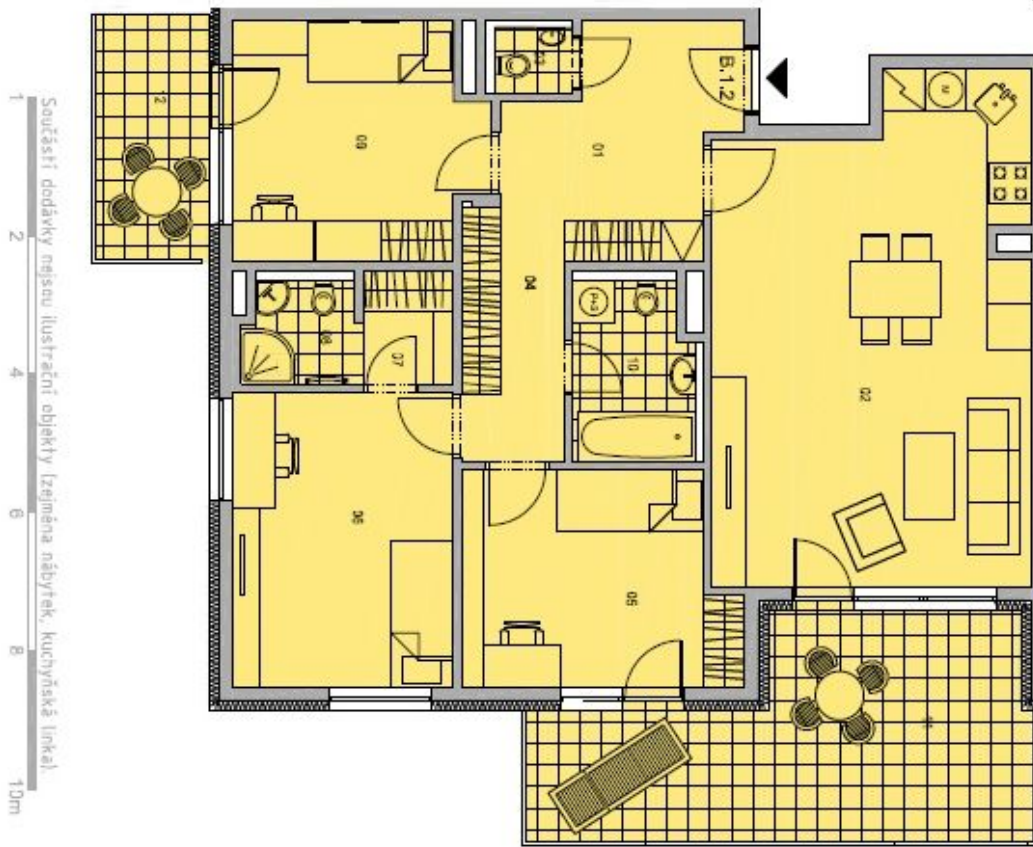
* Area of the unit according to the Civil Code. The area consists of the sum total area of the entire unit bounded by perimeter walls.



Apartment Three-bedroom (4+kk)

Rented

99 m², Prague 6, Veleslavin, Pod Dvorem



Číslo místnosti / Room No.	Název místnosti / Room Name	Plocha / Area (m ²)
01	PŘEDKOVÝ / FOYER	3,2 m ²
02	OBÝVACÍ MÍSTNOST - KUCHYŇSKÁ LINKA / LIVING ROOM - KITCHEN	31,7 m ²
03	WC / WC	3,2 m ²
04	CHODBA / CORRIDOR	3,8 m ²
05	LOŽNICE / BEDROOM	11,8 m ²
06	LOŽNICE / BEDROOM	13,5 m ²
07	BÁŇKA / BATHROOM	2,2 m ²
08	KLOUZAVÝ WC / BATHROOM INC.	2,2 m ²
09	LOŽNICE / BEDROOM	12,2 m ²
10	KLOUZAVÝ WC / BATHROOM INC.	4,4 m ²
CELKOVÁ PLOCHA / TOTAL AREA		99,7 m²
CELKOVÁ PLOCHA PRŮPLACHU / TOTAL AREA OF COMMON PART		19,5 m²
CELKOVÁ PLOCHA TERASY / TOTAL AREA OF TERRACE		4,5 m²
CELKOVÁ PLOCHA PLOŠNÍHO STŘEŠNÍHO DVORA / TOTAL AREA OF TERRACE		5,4 m²



Apartment Three-bedroom (4+kk)

Rented

99 m², Prague 6, Veleslavin, Pod Dvorem

