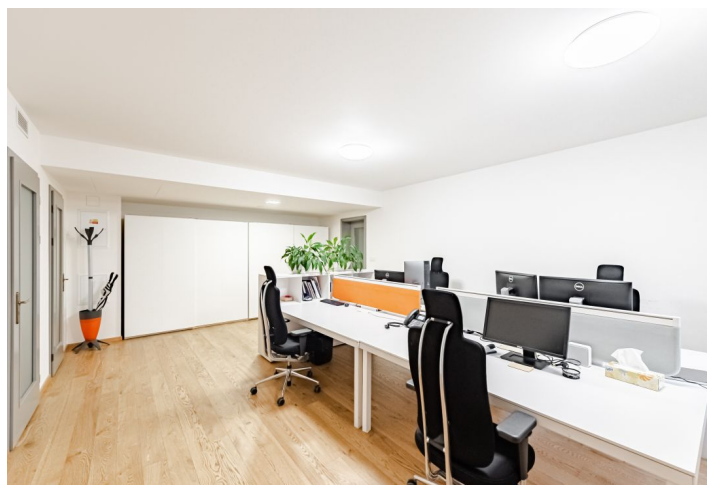
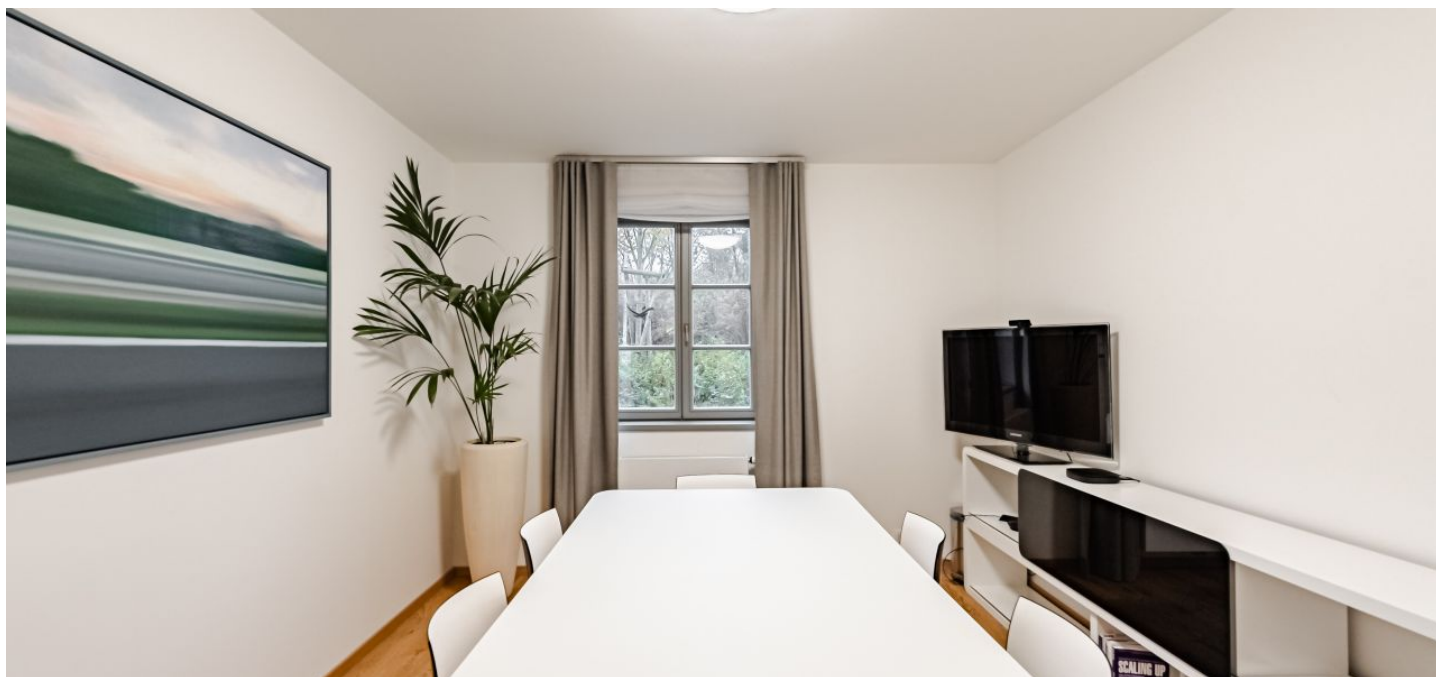




# Office space

Rented

Prague 6, Dejvice, U Matěje





Prague 6, Dejvice, U Matěje

Service price	8 500 CZK monthly
Available area	125 m <sup>2</sup>
Cellar	-
Parking	CZK 2 000 / pp / month
PENB	G
Reference number	100498

Office space for lease on the ground floor of an architecturally and urbanistically interesting residential building, which was created by reconstruction of the historical part of the 16th and 18th century. It is 2 interconnected units - 4 rooms, fully furnished kitchen, 2 stores and 2x toilets with bathroom including shower - 3 garage spaces available. Possibility of repainting and buying furniture. Suitable for use as non-food retail space or office.

**Location:**

Easy access by car and public transport, the bus stop U Matěje with a fast connection to the Hradčanská and Bořislavka metro stations (line A) in the vicinity of the building, nearby is the airport Letiště Václava Havla.

**Feature and Services:**

2 connected units 65,4 sq.m. a 50,2 sq.m.(4 rooms, 2x accessories)  
 2x toilets, 2x shower  
 Low-energy system HVAC  
 2x storage/cloakroom  
 3 onsite underground parking spaces included

The space is under offer.

Rental listed without VAT. Lessee pays no commission.

