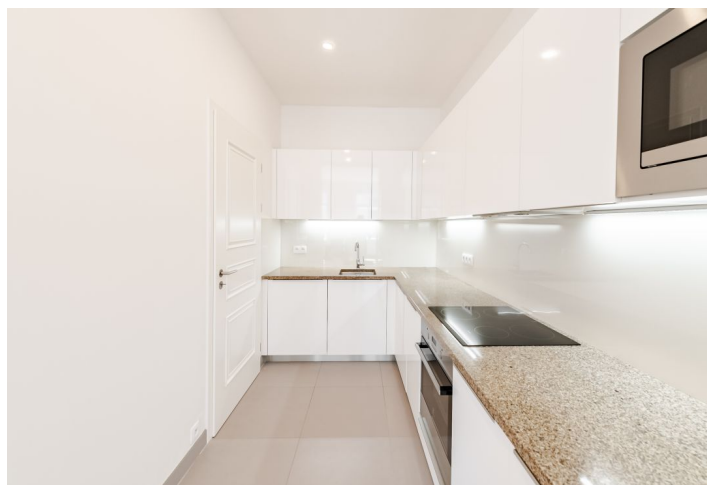
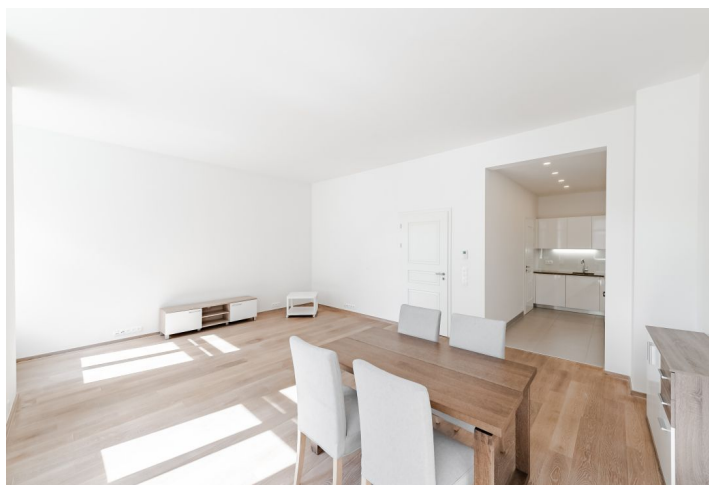




Apartment Two-bedroom (3+kk)

Rented

104 m², Prague 1, Nové Město, Jungmannova





Apartment Two-bedroom (3+kk)

Rented

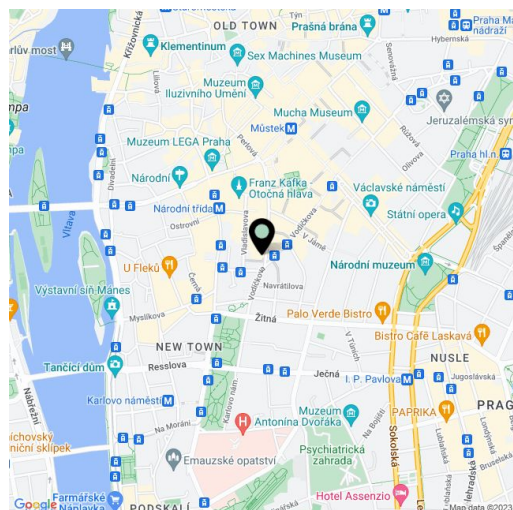
104 m², Prague 1, Nové Město, Jungmannova

Total area	104 m ²
Parking	-
Cellar	-
Service price	Deposit for common building charges, water, and heating CZK 6,800/month. Electricity will be transferred to the tenant's name.
PENB	G
Reference number	100536
Available from	Immediately

Benefiting from a prime central location, this partly furnished apartment is situated on the third floor of a historic building which was completely rebuilt and modernized incl. a meticulously preserved original 1920s Art Deco facade and an interior passage connecting Jungmannova Street with Purkyňova and Vladislavova streets. The front facade in the style of German Expressionism was designed by architects Viktor Lampl and Otto Fuchs. This unique multifunctional building is located in the financial and commercial center of Prague moments from the new Quadrio shopping mall, with excellent access by public transport, a short walk from the Národní třída metro station (line B) and tram line hub as well as the Můstek metro station (lines A, B). Wide range of amenities and services available in close vicinity, quiet despite the central location.

The interior features a living room with a dining area and a fully fitted open plan kitchen, two separate bedrooms, a full bathroom, a shower bathroom with a toilet, and a spacious entrance hall.

Premium materials and finishes, **oak floors**, tiles, heated bathroom floors, thermally insulated **double-glazed windows**, central gas heating, **granite kitchen worktop**, dishwasher, induction cooktop, microwave oven, video entry phone, chip entry to the building.



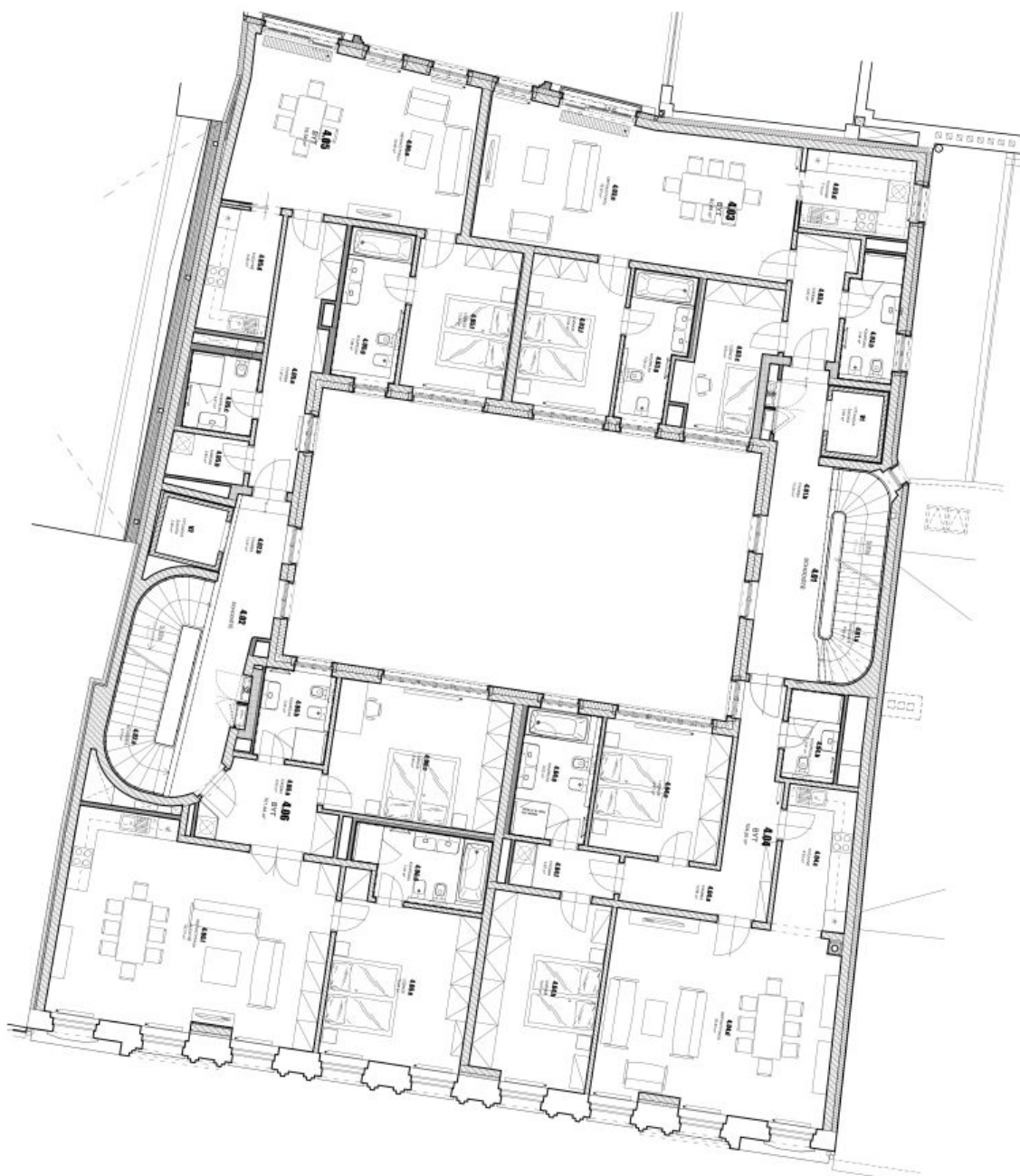
* Area of the unit according to the Civil Code. The area consists of the sum total area of the entire unit bounded by perimeter walls.



Apartment Two-bedroom (3+kk)

Rented

104 m², Prague 1, Nové Město, Jungmannova



TABULKA MÍSTNOSTÍ - 4.NP			
č.m.	NAZEV MÍSTNOSTI	m ²	m ²
4.01	SOUKOŠTĚ	23,85	
4.01a	SOUKOŠTĚ		8,69
4.01b	CHODBA		19,20
4.02	SOUKOŠTĚ	23,11	
4.02a	SOUKOŠTĚ		9,74
4.02b	CHODBA		13,37
4.03	BYT	82,49	
4.03a	CHODBA		5,82
4.03b	KOUPELNA		5,38
4.03c	LOŽNICE		9,63
4.03d	KUCHYŇE		7,15
4.03e	SPRACÍ POKOJ		35,57
4.03f	LOŽNICE		12,09
4.03g	KOUPELNA		7,06
4.04	BYT	104,20	
4.04a	CHODBA		12,86
4.04b	KOUPELNA		3,91
4.04c	KUCHYŇE		8,53
4.04d	SPRACÍ POKOJ		38,40
4.04e	LOŽNICE		13,61
4.04f	CHODBA		3,87
4.04g	KOUPELNA		8,03
4.04h	LOŽNICE		18,01
4.05	BYT	76,54	
4.05a	CHODBA		11,47
4.05b	KOUPELNA		2,83
4.05c	KOUPELNA		4,41
4.05d	KUCHYŇE		6,88
4.05e	SPRACÍ POKOJ		30,46
4.05f	LOŽNICE		12,54
4.05g	KOUPELNA		7,96
4.06	BYT	101,44	
4.06a	CHODBA		8,33
4.06b	KOUPELNA		5,23
4.06c	LOŽNICE		18,83
4.06d	KOUPELNA		7,44
4.06e	LOŽNICE		18,93
4.06f	SPRACÍ POKOJ, KUCHYŇE		42,27
	CELKOVÁ (bez výhledových částí)	411,53	
V1	VÝHLEDOVÁ SÁCHA	2,63	
V2	VÝHLEDOVÁ SÁCHA	2,93	
	TOTAL FLAITS		364,57