



## Apartment Two-bedroom (3+1)

Rented

82 m<sup>2</sup>, Praha 1, Nové Město, Jungmannova





## Apartment Two-bedroom (3+1)

Rented

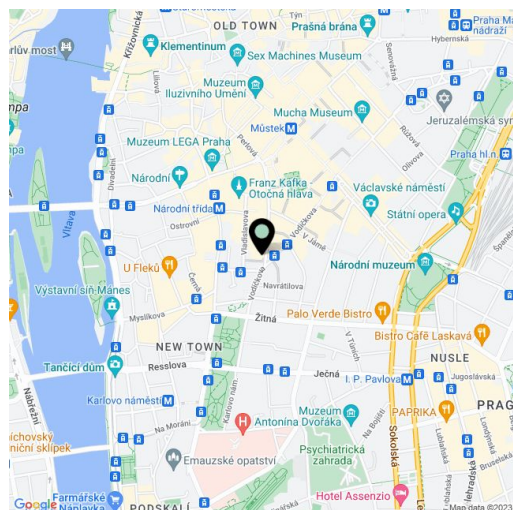
82 m<sup>2</sup>, Praha 1, Nové Město, Jungmannova

Total area	82 m <sup>2</sup>
Parking	-
Cellar	-
Service price	Deposit for common building charges, water, and heating CZK 6,000/month. Electricity will be transferred to the tenant.
PENB	G
Reference number	100537
Available from	Immediately

Benefiting from a prime central location, this 2-bedroom 2-bathroom apartment is situated on the fifth floor of a historic building which was completely rebuilt and modernized incl. a meticulously preserved original 1920s Art Deco facade and an internal passage connecting Jungmannova Street with Purkyňova and Vladislavova streets. The front facade in the style of German Expressionism was designed by architects Viktor Lampl and Otto Fuchs. This unique multifunctional building is located in the financial and commercial center of Prague moments from the new Quadrio shopping mall, with excellent access by public transport, just minutes from the Národní třída metro station (line B) and tram line hub as well as the Můstek metro station (lines A, B). Wide range of amenities and services available in close vicinity, quiet despite the central location.

The interior features living room with dining area, a fully fitted kitchen, two separate bedrooms, a shower bathroom with a toilet, a bathroom with a bathtub, bidet, and toilet, and an entrance hall.

Premium materials and finishes, **oak floors**, tiles, heated bathroom floors, thermally insulated **double-glazed windows**, central gas heating, **granite kitchen worktop**, washer/dryer, dishwasher, induction cooktop, microwave oven, video entry phone, chip entry to the building. Can be furnished at a higher rent. The photos were taken in a show flat. **FURNISHED!** Available from February 2023.



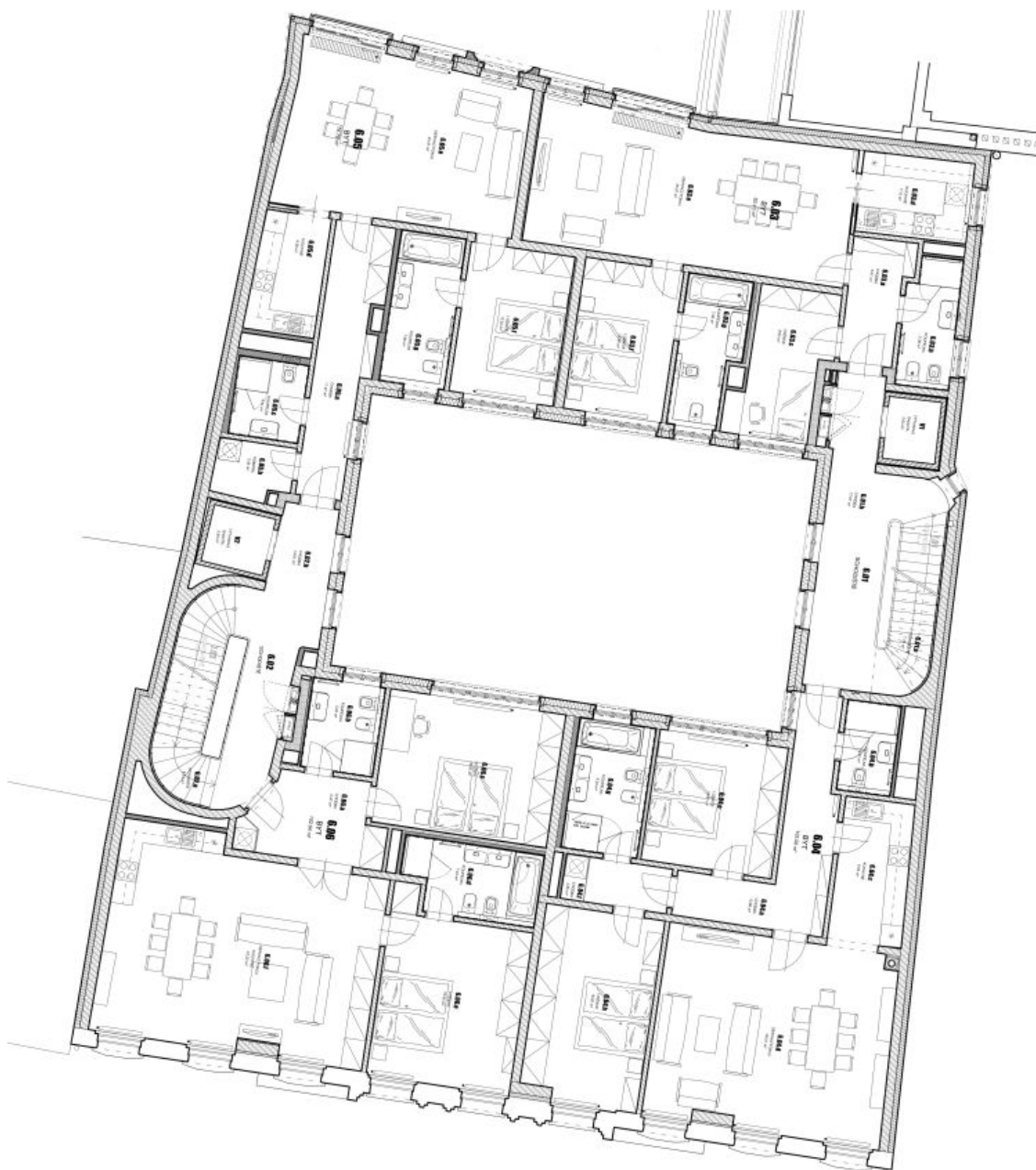
\* Area of the unit according to the Civil Code. The area consists of the sum total area of the entire unit bounded by perimeter walls.



# Apartment Two-bedroom (3+1)

Rented

82 m<sup>2</sup>, Praha 1, Nové Město, Jungmannova



TABULKA MÍSTNOSTÍ - 6.NP			
č.m.	NAZEV MÍSTNOSTI	m <sup>2</sup>	m <sup>2</sup>
6.01	SOUKOŠTĚ	25,69	
6.01a	SOUKOŠTĚ		7,78
6.01b	OKENNA		17,91
6.02	SOUKOŠTĚ	24,35	
6.02a	SOUKOŠTĚ		9,74
6.02b	OKENNA		14,61
6.03	BYT	82,43	
6.03a	OKENNA		5,81
6.03b	KOUPELNA		5,38
6.03c	LÓDNICE		9,83
6.03d	KUCHYNĚ		7,15
6.03e	SPRACOVÁNÍ POKOJŮ		35,37
6.03f	LÓDNICE		12,02
6.03g	KOUPELNA		7,86
6.04	BYT	105,00	
6.04a	OKENNA		12,88
6.04b	KOUPELNA		3,91
6.04c	KUCHYNĚ		8,52
6.04d	SPRACOVÁNÍ POKOJŮ		36,01
6.04e	LÓDNICE		13,81
6.04f	OKENNA		3,85
6.04g	KOUPELNA		8,03
6.04h	LÓDNICE		18,20
6.05	BYT	76,78	
6.05a	OKENNA		11,47
6.05b	KOUPELNA		3,35
6.05c	KOUPELNA		4,41
6.05d	KUCHYNĚ		6,38
6.05e	SPRACOVÁNÍ POKOJŮ		30,47
6.05f	LÓDNICE		12,54
6.05g	KOUPELNA		7,96
6.06	BYT	102,64	
6.06a	OKENNA		8,47
6.06b	KOUPELNA		5,23
6.06c	LÓDNICE		18,83
6.06d	KOUPELNA		7,44
6.06e	LÓDNICE		19,45
6.06f	SPRACOVÁNÍ POKOJŮ, KUCHYNĚ		43,22
CELKEM (bez výhledových sáhů)		416,89	
V1	VÝTAHOVÁ ŠACHTA	2,63	
V2	VÝTAHOVÁ ŠACHTA	2,93	
TOTAL FLATS			366,85