



Apartment Two-bedroom (3+kk)

Rented

92.7 m², Prague 2, Vinohrady, Mánesova





Apartment Two-bedroom (3+kk)

Rented

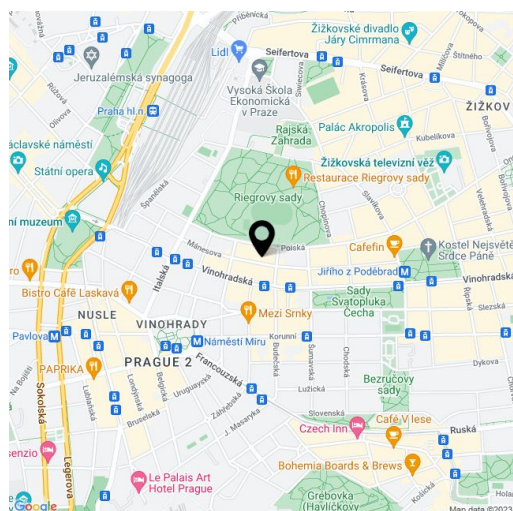
92.7 m², Prague 2, Vinohrady, Mánesova

Total area	96 m ²
Floor area*	93 m ²
Balcony	3 m ²
Parking	-
Cellar	3 m ²
Service price	Monthly deposit for services, water, and heating CZK 8,000. Electricity - transferred to the tenant.
PENB	G
Reference number	100705
Available from	Immediately

This fully refurbished, semi-furnished air-conditioned attic apartment with a balcony is on the 5th floor of a completely meticulously renovated Vinohrady apartment building with a new elevator and preserved original architectural details. The Art Nouveau building is located on a tree-lined street near Riegrovy Sady Park and Jiřího z Poděbrad Square. This attractive residential location offers a variety of shopping opportunities including a popular farmer's market, restaurants, cafes, and bistros, a wide selection of schools, landscaped parks, playgrounds, and easy access to the city center by metro, tram, and car. A metro station and a tram stop are just a minute's walk away.

The interior features a living room with a fully fitted open plan kitchen and a skylight, a master bedroom with a **balcony**, a bedroom with a small closet, a bathroom (walk-in shower, toilet), an additional separate toilet, and an entrance hall.

Air-conditioning, smart home system, hardwood parquet floors, large-format tiles, built-in wardrobes in the bedrooms and hall, designer furniture, underfloor heating in the bathroom, washer, dryer, custom-made kitchen, dishwasher, induction cooktop, microwave oven, TV, cellar.



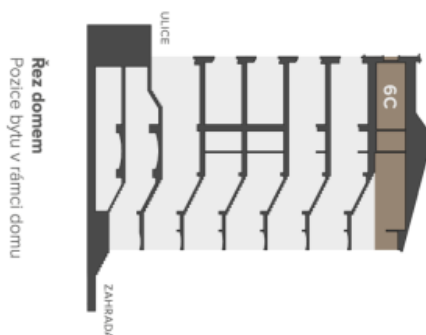
* Area of the unit according to the Civil Code. The area consists of the sum total area of the entire unit bounded by perimeter walls.



Apartment Two-bedroom (3+kk)

92.7 m², Prague 2, Vinohrady, Mánesova

Rented



BYTOVÝ PROSTOR

3+KK

6.NP 98,5 M²

6C.01	HALA	10,9 m ²
6C.02	LOŽNICE	17,7 m ²
6C.03	LOŽNICE	14,9 m ²
6C.04	KOMORA	1,5 m ²
6C.05	TOALETA	1,6 m ²
6C.06	KOUPELNA	3,7 m ²
6C.07	OBYVACÍ POKOJ S KUCHYNSKÝM KOUTEM	38,7 m ²
6C.08	BALKON	3,1 m ²
S1.6C	SKLEP	2,7 m ²
UŽITNÁ PLOCHA CELKEM (včetně balkonu a sklepu)		94,8 m ²
CELKOVÁ PLOCHA (včetně balkonu, konstrukcí a sklepu)		98,5 m ²

