



## Office space

Prague 1, Malá Strana, Tržiště

Rented





## Office space

**Rented**

Prague 1, Malá Strana, Tržiště

<b>Service price</b>	120 CZK monthly per m <sup>2</sup>
<b>Available area</b>	258 m <sup>2</sup>
<b>Cellar</b>	-
<b>Parking</b>	5 400 - 5 400 CZK
<b>Reference number</b>	100788

Office space for lease on the 4th floor in a Renaissance palace with Baroque elements, a large garden and a view of Prague Castle. The palace is located in the Lesser Town in the area of numerous embassies. The space has its own social facilities and kitchenette.

The history of the palace dates back to the end of the 16th century, when two burgher houses stood on the present site. A few years later they were bought by Count Kryštof František Vratislav of Mitrovice and he had them rebuilt into a palace. The palace consists of two floors with a Classicist facade, terraced garden, massive staircase, surrounding wall, and fountains.

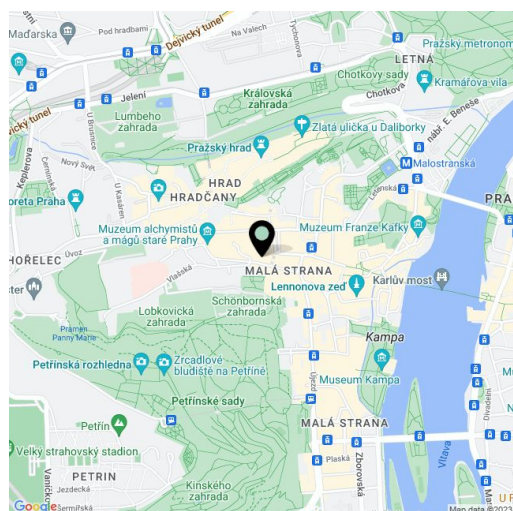
**Location:**

Great location near Malostranské náměstí. The Malostranská (line A) tram and metro station is less than a 10-minute walk away.

**Features and Services:**

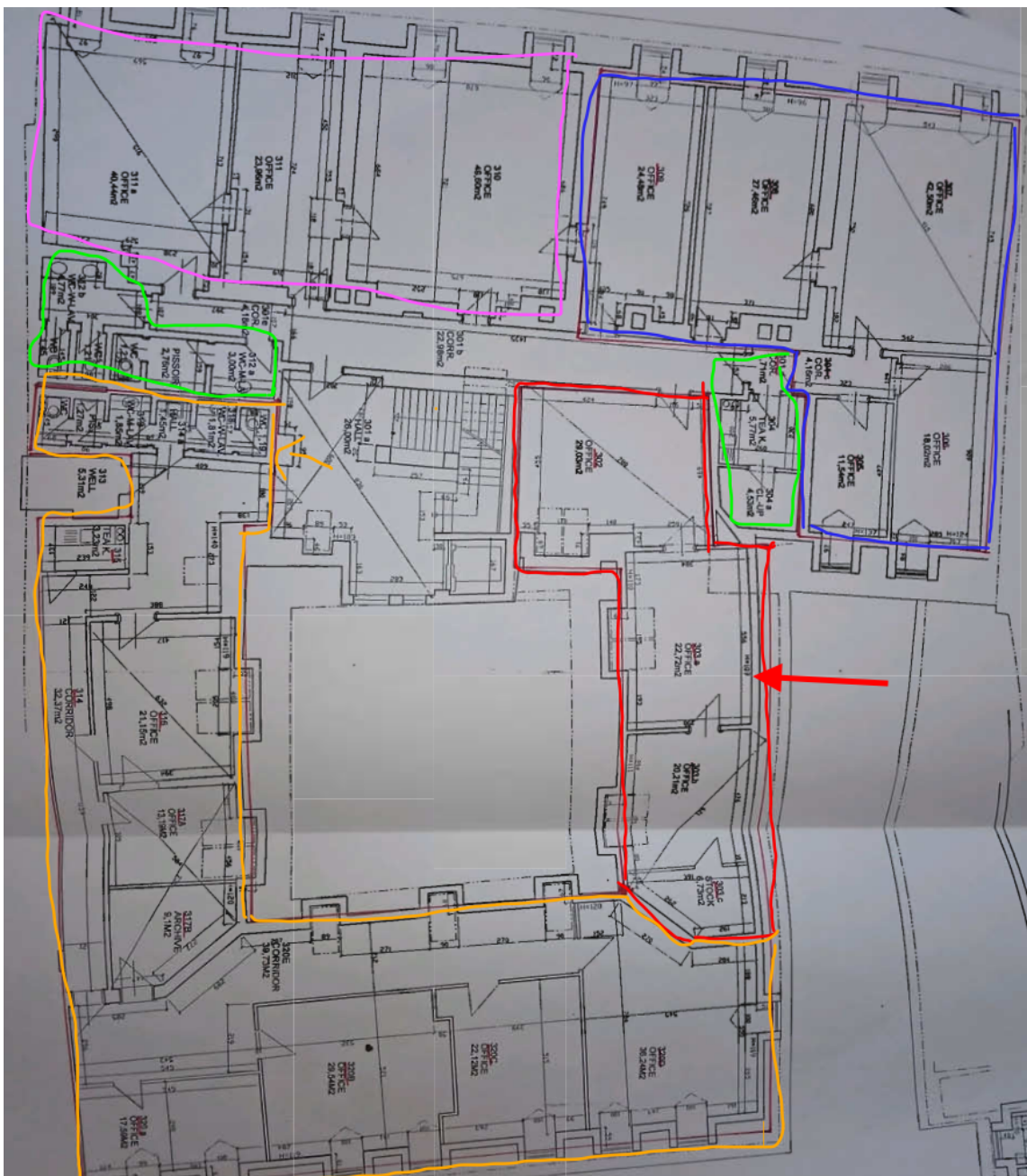
- Kitchenette and toilets
- 24-hour security service
- Elevator
- Central gas heating

Rental and service charges listed without VAT. Lessee pays no commission.











# Office space

Rented

Prague 1, Malá Strana, Tržiště

