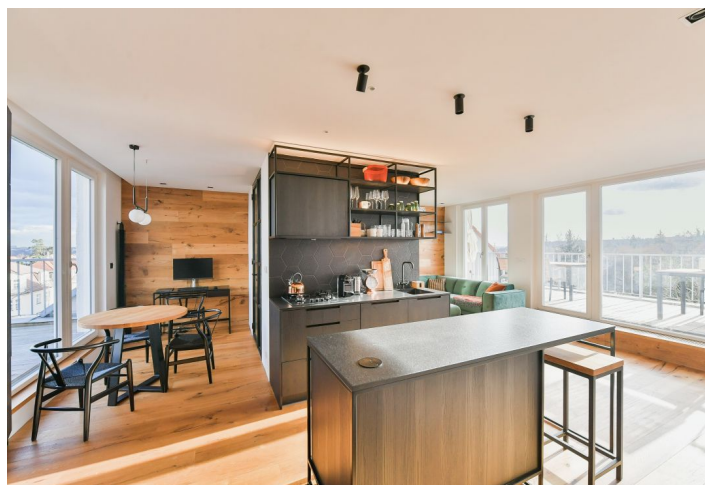
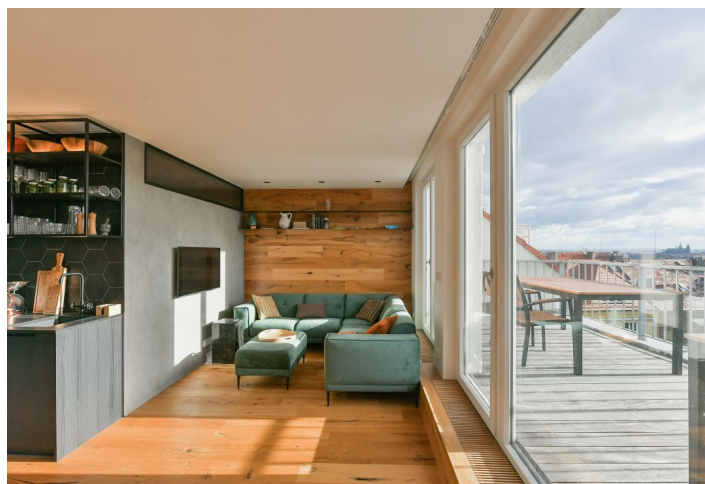




## Apartment One-bedroom (2+kk)

Rented

53 m<sup>2</sup>, Prague 6, Dejvice, Na pískách





## Apartment One-bedroom (2+kk)

Rented

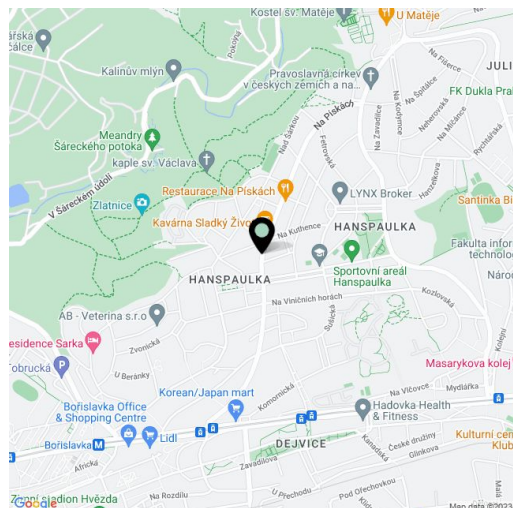
53 m<sup>2</sup>, Prague 6, Dejvice, Na pískách

Total area	83 m <sup>2</sup>
Floor area*	53 m <sup>2</sup>
Terrace	30 m <sup>2</sup>
Parking	-
Cellar	-
Service price	Monthly deposit for service charges and water CZK 1,800. Utilities are billed separately (transferred to the tenant).
Reference number	100791
Available from	Immediately

Benefiting from a prestigious location and an interior designed by an architect, this completely refurbished fully furnished 1-bedroom apartment with 2 terraces and beautiful green views is situated on the 3rd floor of a well-maintained residential building with no elevator in the exclusive residential neighborhood of Hanspaulka on the edge of the Horní Šárka forest park. A sought-after location with excellent transportation connections (bus, trams, a few minutes to the Bořislavka metro station), surrounded by greenery, just a few min. drive from Vítězné Náměstí Square with full amenities and services in the area. Conveniently located for the airport and numerous international schools.

The apartment includes a living room with a fully fitted open plan kitchen and 2 terraces, a bedroom with built-in wardrobes and a walk-in closet, a bathroom with a bathtub and a toilet, and an entrance hall with a built-in wardrobe.

Air-conditioning, hardwood floors, tiles, security entry door, gas boiler, electric underfloor heating in the living room, underfloor heating in the bathroom, washer/dryer, custom-made kitchen, dishwasher, microwave oven, basic kitchenware, TV, separate storage room in the common areas of the building, cellar.



\* Area of the unit according to the Civil Code. The area consists of the sum total area of the entire unit bounded by perimeter walls.