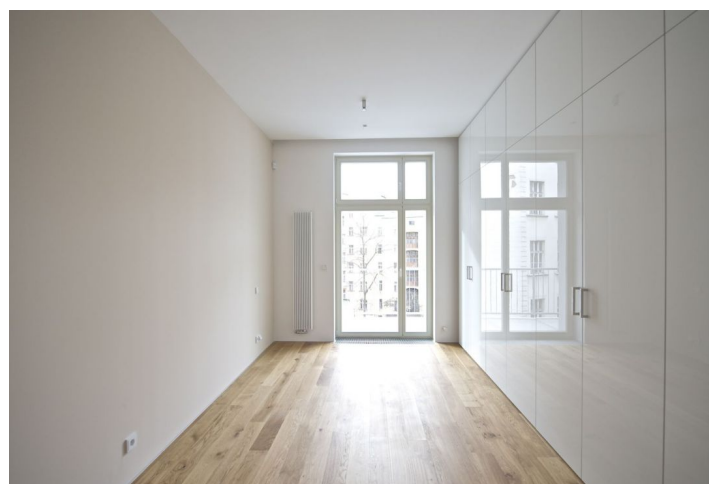




## Apartment One-bedroom (2+kk)

Rented

72 m<sup>2</sup>, Prague 3, Vinohrady, Laubova





## Apartment One-bedroom (2+kk)

Rented

72 m<sup>2</sup>, Prague 3, Vinohrady, Laubova

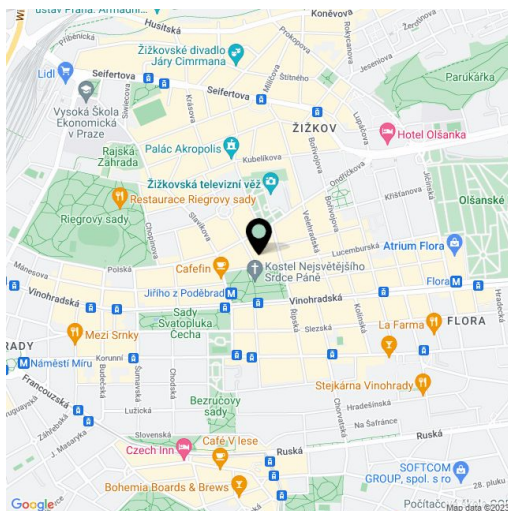
Total area	87 m <sup>2</sup>
Floor area*	72 m <sup>2</sup>
Terrace	15 m <sup>2</sup>
Parking	-
Cellar	-
Service price	Deposit for common building charges and utilities CZK 6,000/month.
PENB	G
Reference number	100793
Available from	Immediately

This unfurnished apartment designed by an architect with a 15 m<sup>2</sup> terrace facing a quiet courtyard is on the 3rd floor of a newly fully refurbished classic building with an elevator.

Conveniently located in a quiet part of a popular residential part of Vinohrady with full amenities, just steps from the Jiřího z Poděbrad metro station, a short walk to Riegrovy Sady Park.

With quality materials and finishes, the apartment features a fully fitted open plan kitchen with integrated appliances and plenty of cupboard space, a living room with access to the terrace, one bedroom with built-in wardrobes and terrace access, a shower bathroom with a toilet, bidet, and closet/laundry room, and an entry hall with built-in wardrobes.

Tall clean lines, wooden floors, French windows, security door, recessed lighting, central switch, washer, dryer, satellite, alarm that can be connected to a security agency, video entry phone. Designed by the renowned Donlic studio.



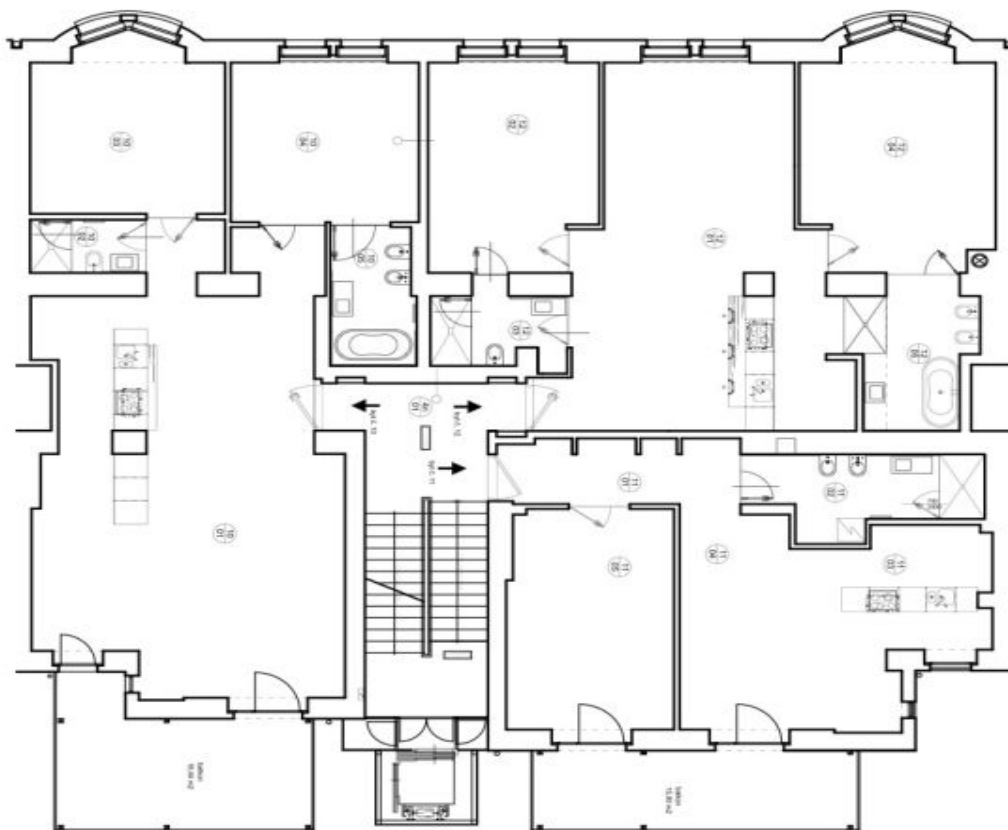
\* Area of the unit according to the Civil Code. The area consists of the sum total area of the entire unit bounded by perimeter walls.



# Apartment One-bedroom (2+kk)

72 m<sup>2</sup>, Prague 3, Vinohrady, Laubova

Rented



# 4.NP

BYT 4.10		
CZM	MĚTNOST	m <sup>2</sup>
11001	obývací pokoj s kuchyní	70,61
11002	ložnice I.	3,00
11003	ložnice II.	18,52
11004	ložnice III.	17,22
11005	ložnice III.	6,63
BYT 4.10 celkem		116,98

BYT 4.11		
CZM	MĚTNOST	m <sup>2</sup>
11011	obývací pokoj	8,81
11012	kuchyně	9,34
11013	ložnice + koupelna	18,52
11014	obývací pokoj	14,31
11015	ložnice	21,40
BYT 4.11 celkem		72,40

BYT 4.12		
CZM	MĚTNOST	m <sup>2</sup>
12001	obývací pokoj s kuchyní	49,50
12002	ložnice I.	20,07
12003	ložnice I.	5,75
12004	ložnice II.	24,40
12005	ložnice II.	8,71
BYT 4.12 celkem		108,43

BYT 4.13		
CZM	MĚTNOST	m <sup>2</sup>
13001	obývací pokoj s kuchyní	25,50