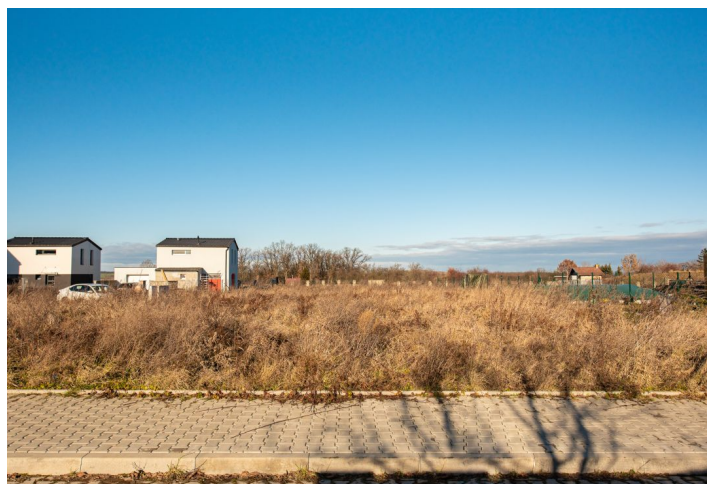




House Four-bedroom (5+kk)

Sold

220 m², Praha-západ, Horoměřice, K Menhiru





House Four-bedroom (5+kk)

Sold220 m², Praha-západ, Horoměřice, K Menhiru

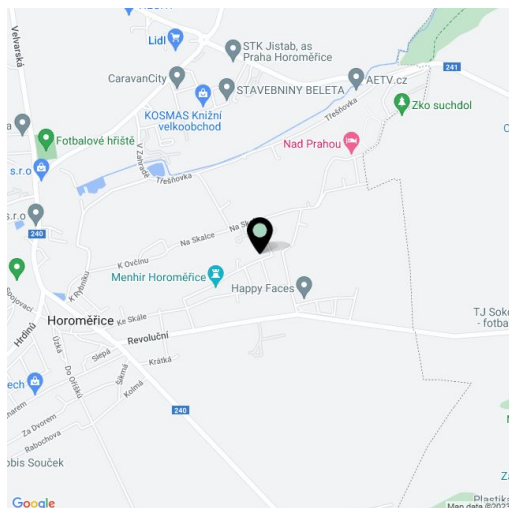
Plot	661 m ²
Parking	Yes
Cellar	-
Reference number	100807

This flat corner plot of land with a valid permit for the construction of a family house is located in a quiet, green place between the municipality of Horoměřice and the Prague 6 Suchdol and Lysolaje districts, not far from international schools and the airport.

The 4-bedroom house project includes a living room and a dining room on the ground floor, connected by a **south-facing terrace**. The social area on the ground floor is complemented by a kitchen, dressing room, toilet, and utility room. The first floor is planned as a private zone; the parental part will consist of a bedroom, a dressing room, a bathroom with an **infrared sauna** and a relaxation corner. There are also 2 children's rooms with dressing rooms, a guest room/study and a central bathroom. Parking is provided by a **covered carport for 2 cars**. **Utility networks** (water, gas, electricity, and sewage) are connected to the plot of land with a total area of 661 sq. m.; the entrance leads to a new lit road made of interlocking paving. The offer includes a project with documentation for a **building permit**, which is valid until December 2024.

The land is part of a currently emerging residential district in a village with a good infrastructure. Nearby is a kindergarten and elementary school, shops including a supermarket, a **sports complex**, and a children's playground. The **CZU campus** is within easy reach, and the Riverside School Prague and the **International School of Prague** are also within a short driving distance. The drive to the airport is quick. Transport connections are provided by buses, and the ride to the Dejvická metro station takes 15 minutes; serviceability will improve even more after the extension of the tram line to Suchdol. The area is surrounded by beautiful nature with many **natural monuments**.

Total area 661 m².

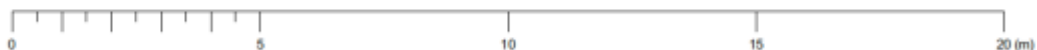
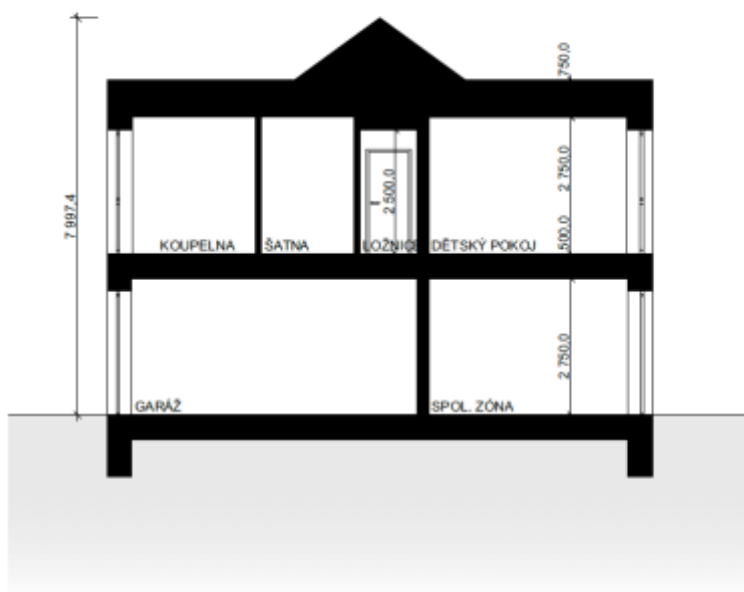
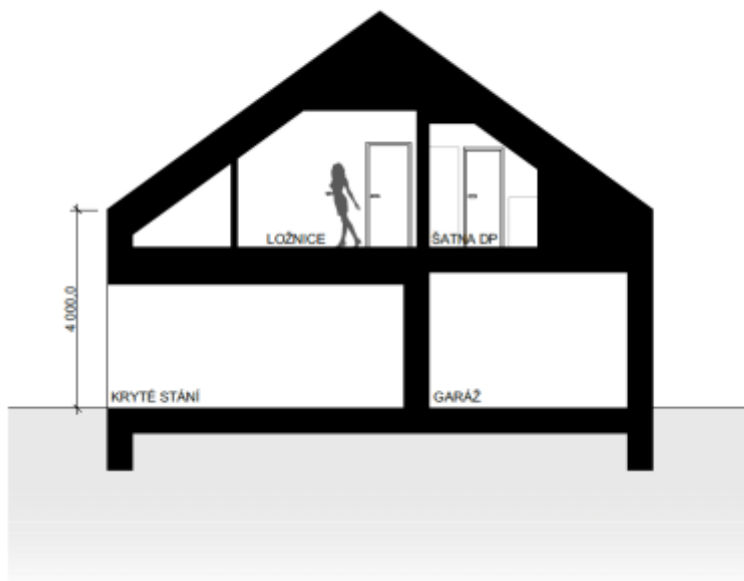
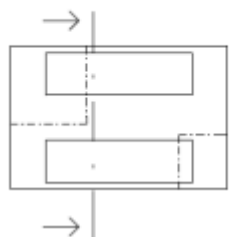
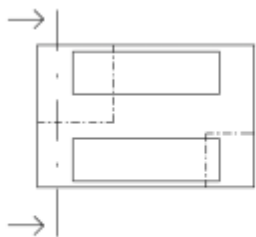




House Four-bedroom (5+kk)

220 m², Praha-západ, Horoměřice, K Menhiru

Sold

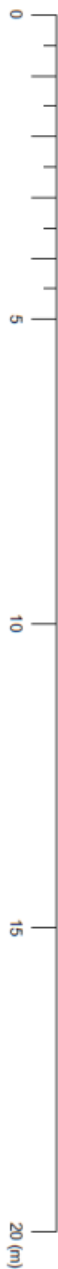




House Four-bedroom (5+kk)

220 m², Praha-západ, Horoměřice, K Menhiru

Sold

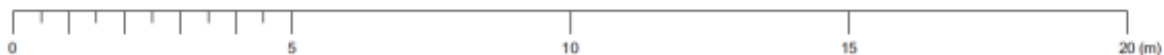
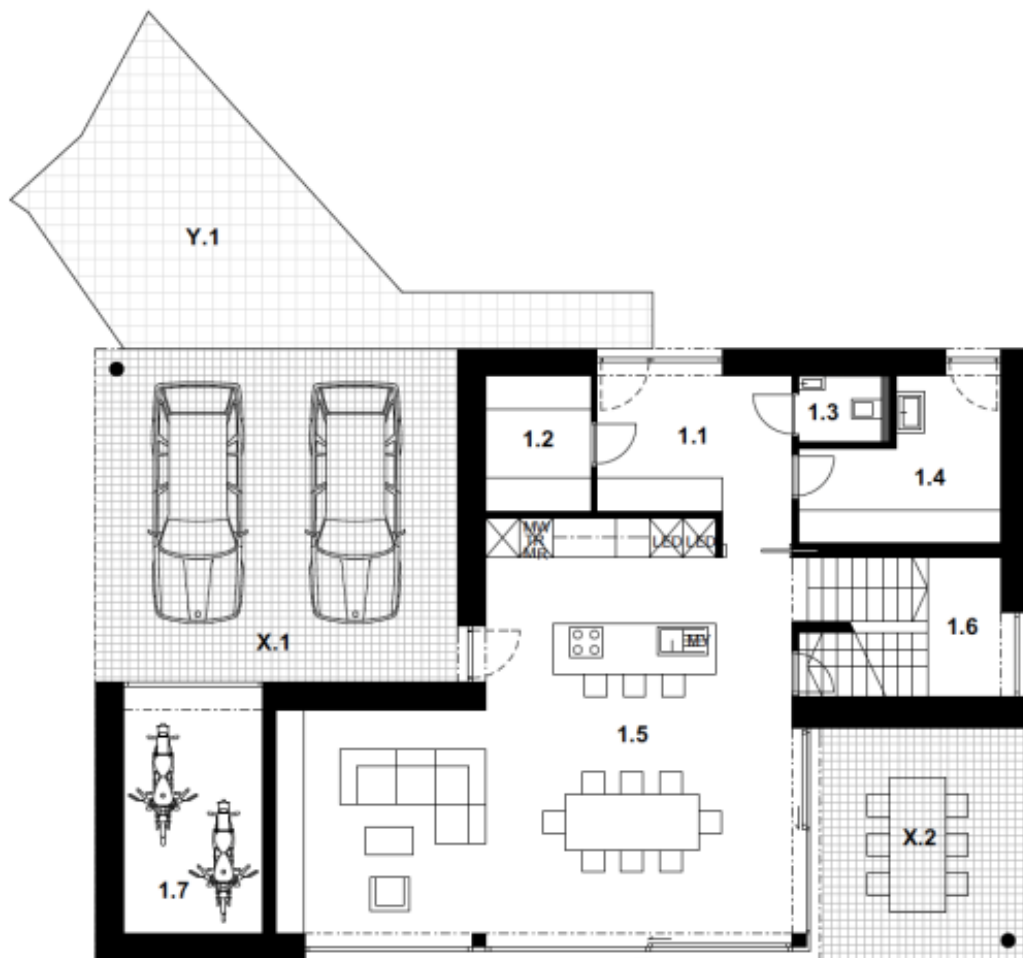




House Four-bedroom (5+kk)

Sold

220 m², Praha-západ, Horoměřice, K Menhiru

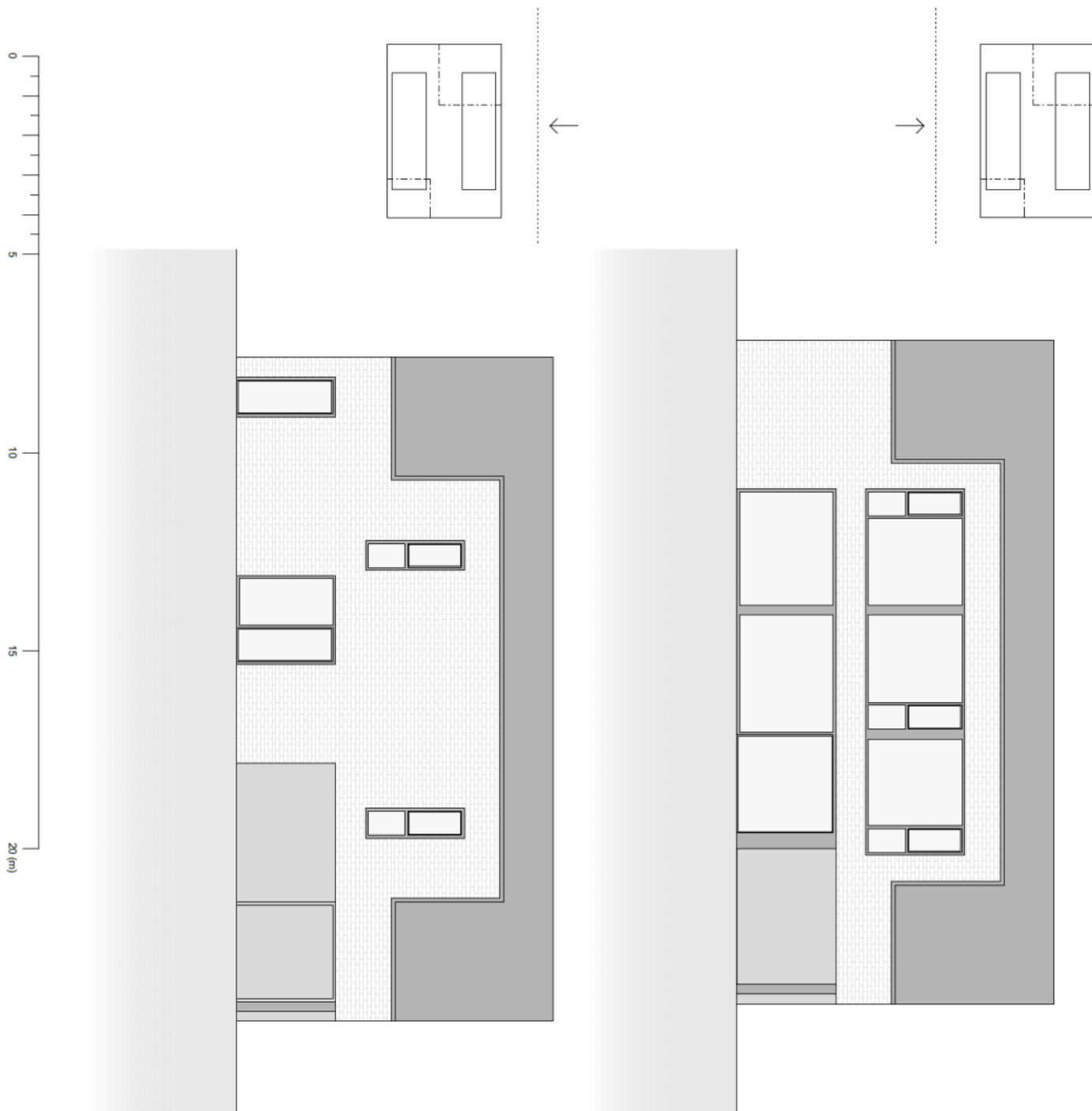




House Four-bedroom (5+kk)

220 m², Praha-západ, Horoměřice, K Menhiru

Sold





House Four-bedroom (5+kk)

Sold

220 m², Praha-západ, Horoměřice, K Menhiru

