



Apartment One-bedroom (2+kk)

Rented

73 m², Prague 5, Malá Strana, Újezd





Apartment One-bedroom (2+kk)

Rented

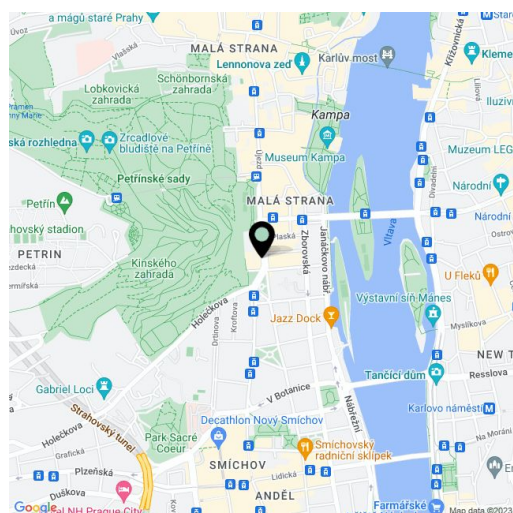
73 m², Prague 5, Malá Strana, Újezd

| | |
|------------------|--|
| Total area | 75 m ² |
| Floor area* | 73 m ² |
| Balcony | 2 m ² |
| Parking | Garage parking available. |
| Garage | Yes |
| Cellar | — |
| Service price | Deposit for common building charges and utilities CZK 7,500/month + VAT. |
| PENB | G |
| Reference number | 100814 |
| Available from | Immediately |

This elegant furnished 1-bedroom apartment with a balcony offers spacious rooms, over-sized windows, and a well-designed layout. Situated on the second floor of a fully refurbished historic building with an elevator, a reception, and garage parking. Located in the picturesque Malá Strana neighborhood at the bottom of Petřín Hill Park, within walking distance of the Vltava River and Kampa Park, with full amenities and easy access to the city center.

The interior includes a comfortable living room with a fully equipped open plan kitchen and access to the balcony, one bedroom, built-in closets, a stylish stone bathroom with a Jacuzzi tub, and an entrance hall.

Other amenities include high ceilings and windows overlooking the park that create a pleasant airy atmosphere. Built-in wardrobes, security entry door, dishwasher, washer, dryer, monitored alarm system and video entry phone, alarm. Cleaning can be arranged upon request. Garage parking available for CZK 3,900/month + VAT.



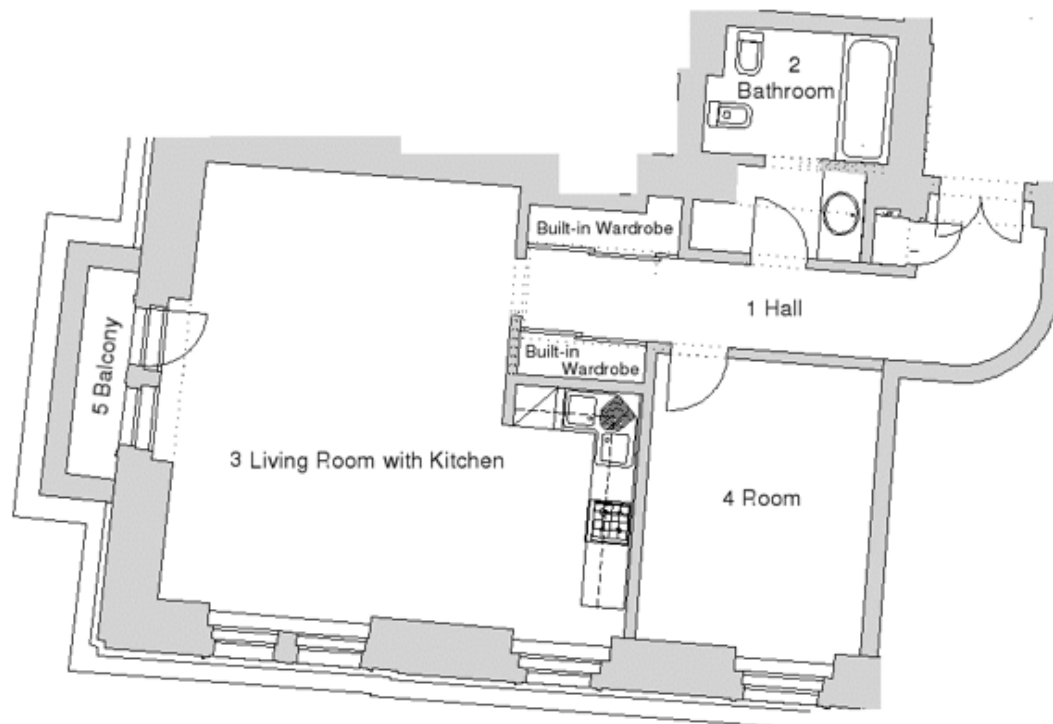
* Area of the unit according to the Civil Code. The area consists of the sum total area of the entire unit bounded by perimeter walls.



Apartment One-bedroom (2+kk)

73 m², Prague 5, Malá Strana, Újezd

Rented



| | | | | |
|---|--------------------------|--------------------|-------|----------------|
| 1 | Hall + Wardrobe | Chodba + Šatník | 13,15 | m ² |
| 2 | Bathroom | Koupelna | 7,55 | m ² |
| 3 | Living Room with kitchen | Obývací pokoj s KK | 36,90 | m ² |
| 4 | Room | Pokoj | 13,15 | m ² |
| 5 | Balcony | Balkon | 2,09 | m ² |
| | Total | Celkem | 72,84 | m ² |

