



House Four-bedroom (5+kk)

Rented

171 m², Prague 6, Střešovice, Dělostřelecká





House Four-bedroom (5+kk)

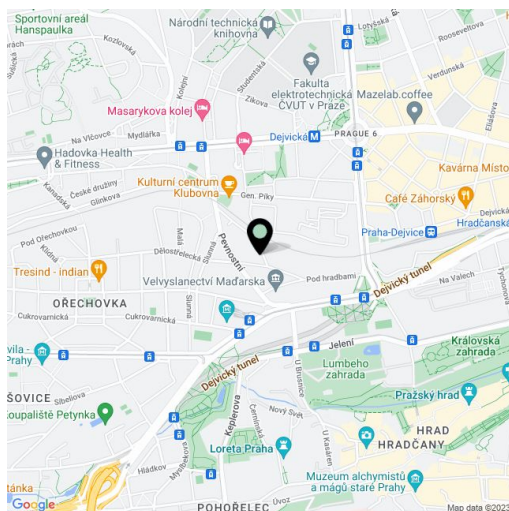
Rented171 m², Prague 6, Střešovice, Dělostřelecká

Plot	224 m ²
Foot print	126 m ²
Garden	98 m ²
Parking	Parking on the plot.
Cellar	-
Service price	Utilities CZK 5,000/month. Gas and electricity will be transferred to the tenant.
PENB	G
Reference number	100863
Available from	Immediately

Boasting a prestigious location, this completely refurbished 1920s townhouse is situated in the heart of the exclusive Ořechovka neighborhood with mature trees, parks, and distinguished villas. A location with quick access to the city center, the Prague Castle, international schools (ISP, Riverside School, French School, Park Lane), and the airport, within easy reach of the Dejvická and Hradčanská metro stations.

Ground floor: living room with a fully fitted open plan kitchen and access to the terrace and private garden, guest toilet, entry hall. First floor: winter garden, two bedrooms, walk-in closet, shower bathroom with a double sink, and toilet. Second floor: two bedrooms, shower bathroom with a sink and toilet. Basement floor: laundry/boiler room with storage space.

Preserved original features, parquet floors and tiles, wooden staircase, alarm, audio entry phone. One parking space in front of the house. Available from May 2023.



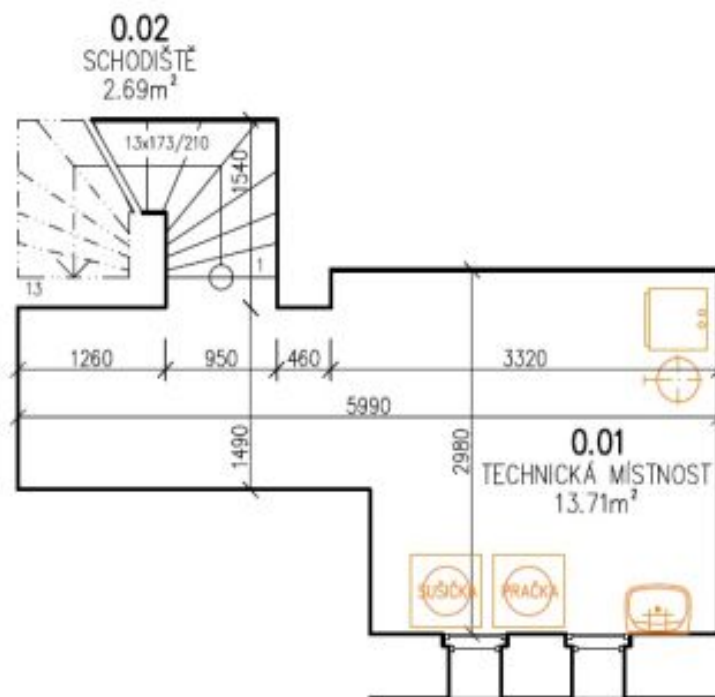


House Four-bedroom (5+kk)

Rented

171 m², Prague 6, Střešovice, Dělostřelecká

PŮDORYS 1.PP - 1:50

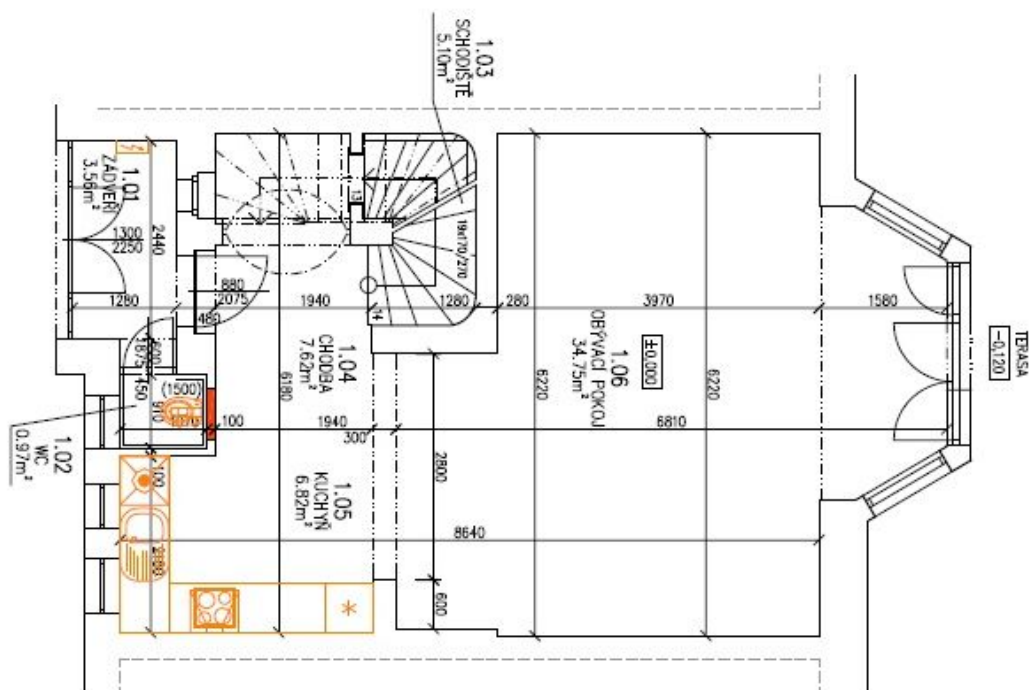




House Four-bedroom (5+kk)

171 m², Prague 6, Střešovice, Dělostřelecká

Rented



PŮDORYS 1.NP - 1:50

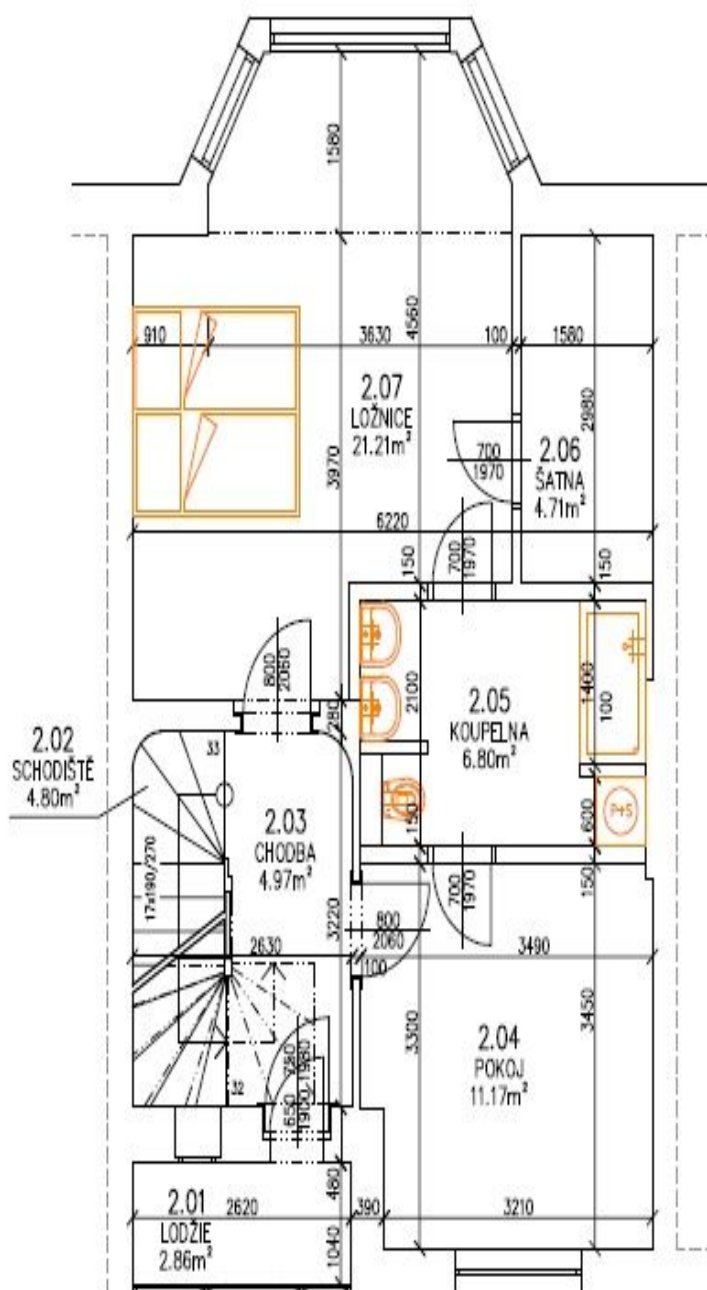


House Four-bedroom (5+kk)

Rented

171 m², Prague 6, Střešovice, Dělostřelecká

PŮDORYS 2.NP - 1:50





House Four-bedroom (5+kk)

171 m², Prague 6, Střešovice, Dělostřelecká

Rented

PŮDORYS 3.NP - 1:50

