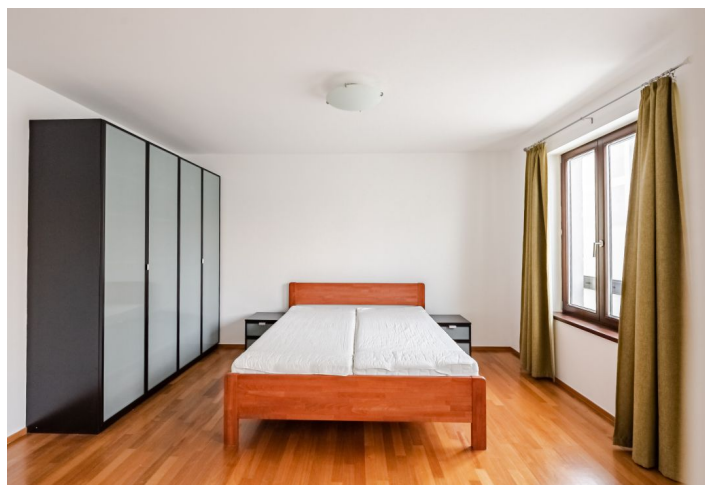




## Apartment One-bedroom (2+kk)

Rented

53 m<sup>2</sup>, Prague 8, Karlín, Šaldova





## Apartment One-bedroom (2+kk)

Rented

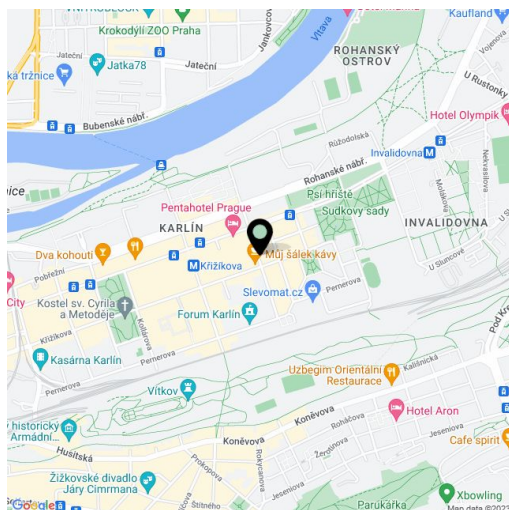
53 m<sup>2</sup>, Prague 8, Karlín, Šaldova

Total area	53 m <sup>2</sup>
Parking	Garage parking.
Garage	Yes
Cellar	-
Service price	Monthly deposit for service charges, water, heating, and garage maintenance: CZK 4,500. Electricity is billed separately (transferred to the tenant).
Reference number	100882
Available from	Immediately

This semi-furnished 1-bedroom apartment is on the second floor of a fully refurbished industrial building converted into the Cornlofts Šaldova modern development. Located on a quiet street in a highly sought-after Prague 8 area close to the Karlín business zone, with full amenities and quick connections to the city center, just three minutes from the Křižíkova metro station and tram stop. Building amenities include elevator, 24/7 security, security cameras, a shared landscaped courtyard garden, and underground parking.

The apartment offers a living room with a fully fitted open plan kitchen and dining area, a bedroom with an en-suite bathroom (bathtub), a separate toilet, and an open entrance hall.

**Hardwood floors**, tiles, security entry door, washing machine, dishwasher, induction cooktop, chip entry to the building. A **garage parking** space is included.



\* Area of the unit according to the Civil Code. The area consists of the sum total area of the entire unit bounded by perimeter walls.