



## Apartment Three-bedroom (4+kk)

Rented

115 m<sup>2</sup>, Prague 2, Vinohrady, Šumavská





## Apartment Three-bedroom (4+kk)

Rented

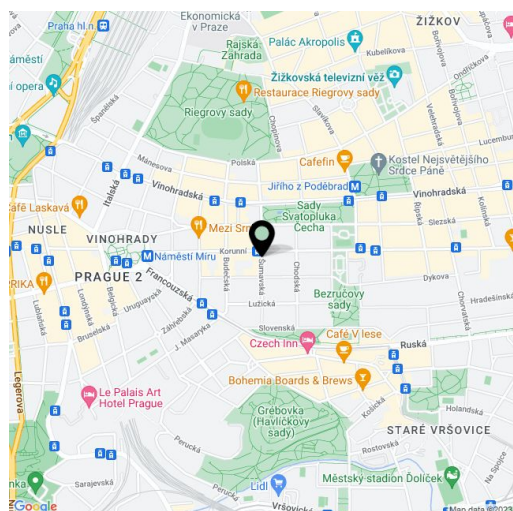
115 m<sup>2</sup>, Prague 2, Vinohrady, Šumavská

Total area	133 m <sup>2</sup>
Floor area*	115 m <sup>2</sup>
Terrace	18 m <sup>2</sup>
Parking	Nearby parking is available.
Garage	Yes
Cellar	-
Service price	Monthly deposit for service charges and water CZK 2,500. Utilities are billed separately.
Reference number	100891
Available from	Immediately

This brand new semi-furnished 3-bedroom 2-bathroom apartment with a terrace is on the 5th floor of a completely renovated premium residential building with a new elevator. Set in the much sought-after neighborhood of Vinohrady right next to Svatopluka Čecha Park, within easy reach of full amenities and services, and with quick access to the city center. Located within walking distance of the Náměstí Míru metro station and the lovely Havlíčkovy Sady and Sady Bratřů Čapků parks.

The lower level of the apartment features two bedrooms with built-in wardrobes and storage, a bathroom with a bathtub, a separate toilet, a walk-in closet/storage room, and an entrance hall with built-in wardrobes. The upper floor includes a living room with a fully fitted open plan kitchen and an east-facing terrace, a bedroom with built-in wardrobes and a shower room, a separate toilet, and a utility room.

**Air-conditioning, hardwood floors**, tiles, automatic exterior blinds on the upper floor, automatic interior roller blinds in the lower floor bedrooms, manual interior roller blinds in the upper floor bedroom, gas boiler, underfloor heating, washer, dryer, dishwasher, induction cooktop, microwave oven, TV, **cellar**. **Parking** is available 150 m from the building at CZK 5,000/month.



\* Area of the unit according to the Civil Code. The area consists of the sum total area of the entire unit bounded by perimeter walls.

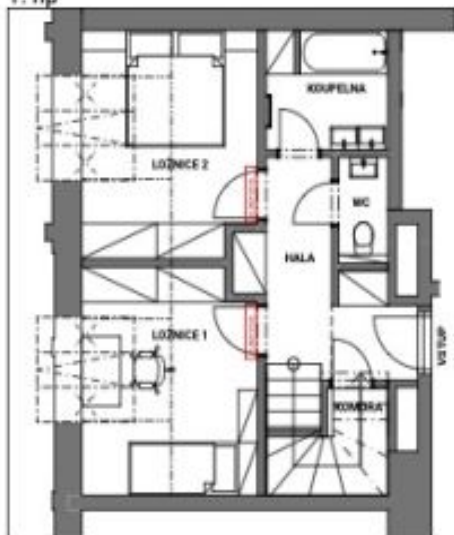


## Apartment Three-bedroom (4+kk)

Rented

115 m<sup>2</sup>, Prague 2, Vinohrady, Šumavská

1. np



BYT 4 KK, ŠUMAVSKÁ



2. np

