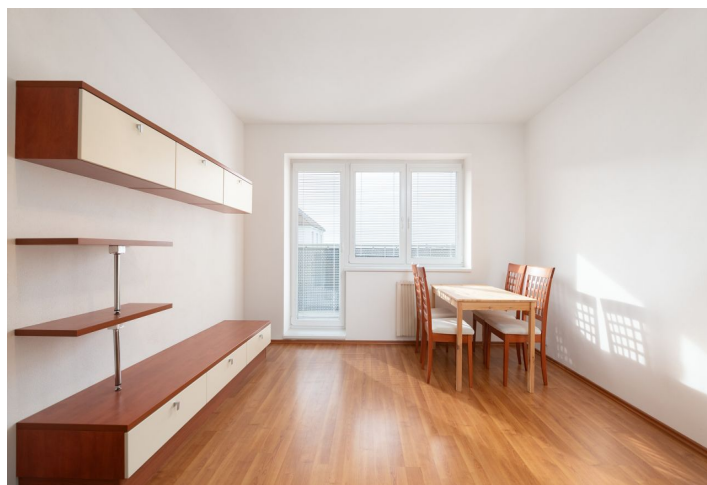
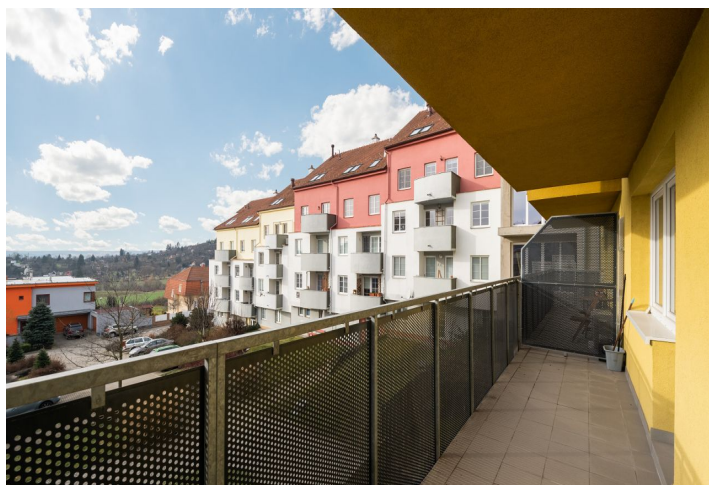




## Apartment Two-bedroom (3+kk)

Rented

70.53 m<sup>2</sup>, Brno-město, Řečkovice, Nachová





## Apartment Two-bedroom (3+kk)

Rented

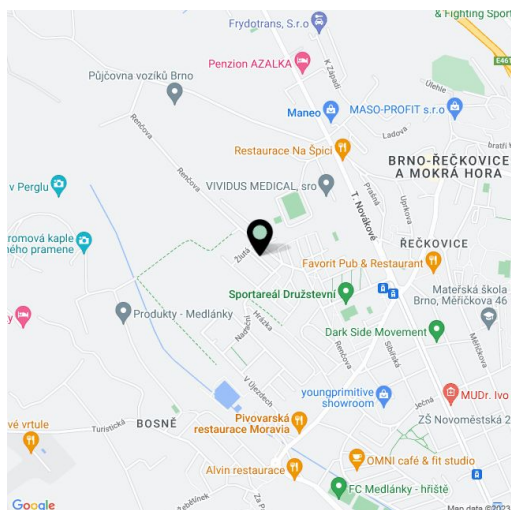
70.53 m<sup>2</sup>, Brno-město, Řečkovice, Nachová

Total area	80 m <sup>2</sup>
Floor area*	71 m <sup>2</sup>
Balcony	9 m <sup>2</sup>
Parking	Parking in a reserved parking lot in front of the house.
Cellar	-
Service price	Monthly deposit for common building charges and utilities CZK 5,000.
Reference number	100906
Available from	Immediately

This is a bright semi furnished 2-bedroom apartment with a balcony and green views, on the first floor in a residential building with a lift and parking. Located in a slope in the popular Medlánky residential neighborhood, within walking distance of a bus stop. Local amenities include playgrounds, a primary school, a kindergarten, a grammar school, a shopping center and the Sportareál Družstevní fitness center with a swimming pool.

The interior features a living room with a fully fitted open plan kitchen and access to the **balcony**, a bedroom also with balcony access, a second bedroom, a bathroom including a bathtub, a separate toilet, a **walk-in closet**, and a spacious entrance hall.

Plastic windows, interior blinds, floating floors, tiles, storage space, underfloor heating in the bathroom and the hall, electric heating, electric hot water boiler, sofabed, **cellar**. A **parking** space is available in front of the building, plus parking in a parking lot.



\* Area of the unit according to the Civil Code. The area consists of the sum total area of the entire unit bounded by perimeter walls.