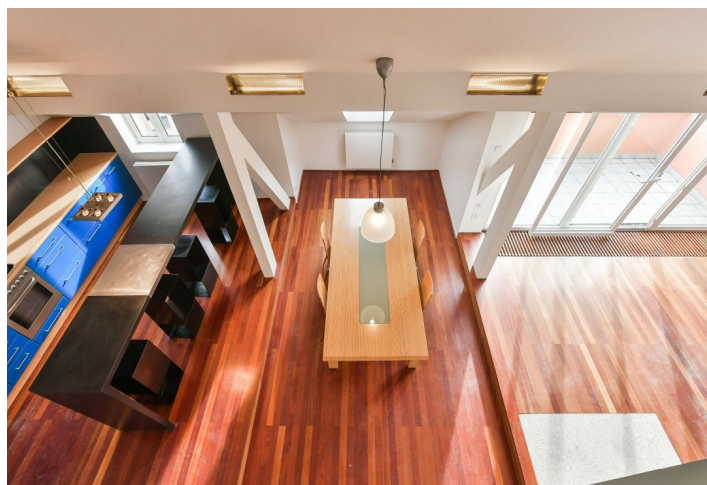
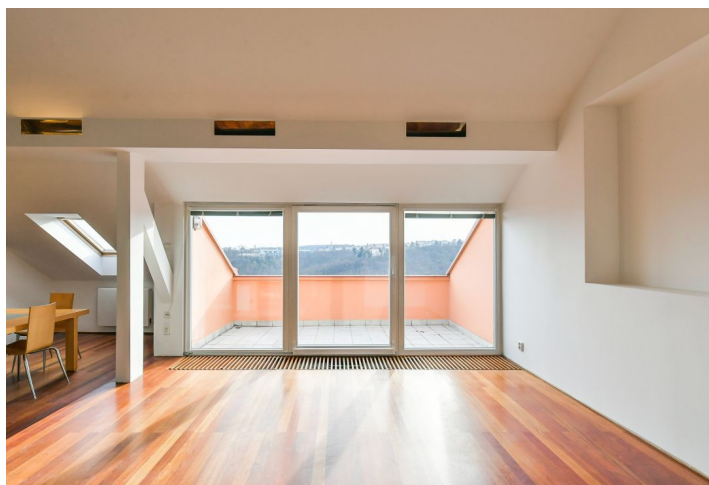
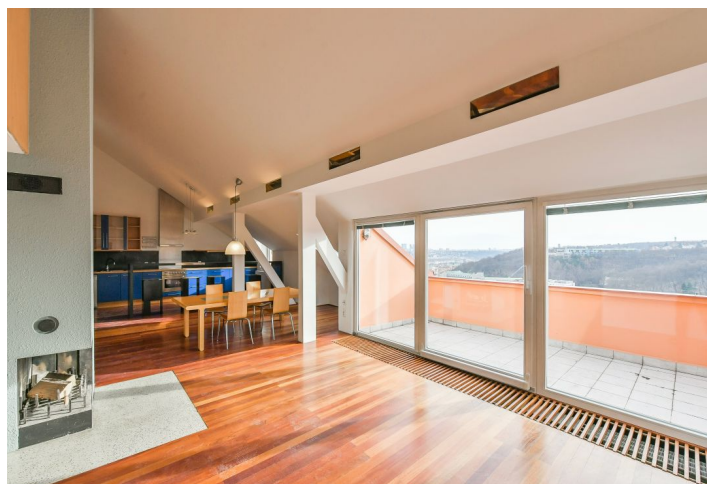




Apartment Two-bedroom (3+kk)

Rented

161.5 m², Praha 5, Smíchov, Švédská





Apartment Two-bedroom (3+kk)

Rented

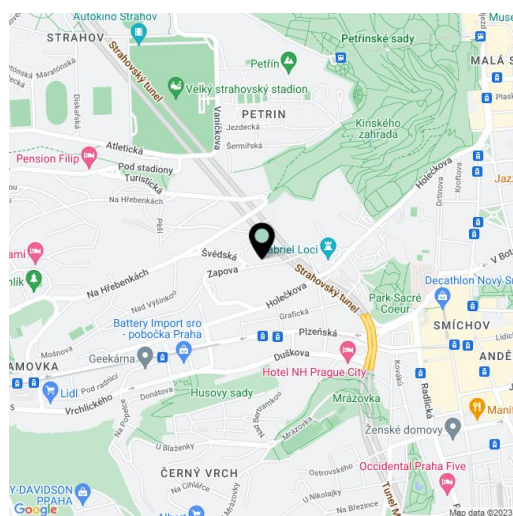
161.5 m², Praha 5, Smíchov, Švédská

Total area	170 m ²
Floor area*	162 m ²
Terrace	9 m ²
Parking	-
Cellar	-
Service price	Monthly deposit for service charges and water: CZK 600/person/month. Gas and electricity are billed separately (transferred to the tenant).
PENB	G
Reference number	100938
Available from	Immediately

This spacious unfurnished 2-bedroom 2-bathroom attic apartment with a terrace providing wonderful views of Prague is on the topmost 4th floor of a well-maintained residential building without an elevator. Situated in a Prague 5 residential neighborhood in the vicinity of Kinského Garden, Petřín Hill, and the Nový Smíchov shopping and entertainment center. A quiet location with bus connections, 5 minutes to the Újezd tram stop and Anděl metro station, and convenient to the French School.

The lower level of the apartment features a spacious living room with a fireplace, fully fitted open plan kitchen, dining area, and access to the terrace, a shower room with a pissoir and a toilet, and a large open gallery above the living room suitable for a study. The two bedrooms are situated separately together with the second bathroom (bathtub, bidet, toilet).

Hardwood floors, tiles, built-in storage, blinds, gas heating, dishwasher.



* Area of the unit according to the Civil Code. The area consists of the sum total area of the entire unit bounded by perimeter walls.