



House Three-bedroom (4+kk)

Ask for price

127 m², Prague 10, Strašnice, Solidarity





House Three-bedroom (4+kk)

[Ask for price](#)127 m², Prague 10, Strašnice, Solidarity

Plot	148 m ²
Foot print	56 m ²
Garden	92 m ²
Parking	-
Cellar	-
PENB	G
Reference number	100967

This completely renovated apartment with the parameters of a family house with a cozy interior and a west-facing landscaped garden is located in one of the greenest parts of Prague's Strašnice district, within easy reach of all civic amenities and public transport stations.

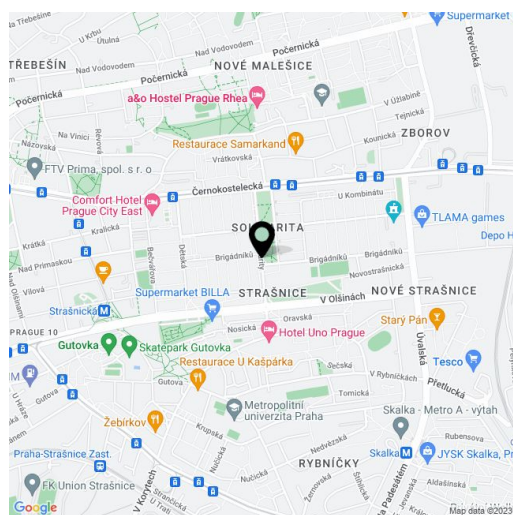
The unit's ground floor consists of a living room, an adjoining kitchen with a window, an entrance hall, a separate toilet, and a closet. On the 1st floor are 2 bedrooms and a bathroom (with a bathtub, shower, and toilet). A large bedroom extends over the entire attic. The living room has access to the garden terrace.

Facilities include **wooden plank floors**, **wooden stairs**, built-in wardrobes, and a fully equipped kitchen. **The fireplace** in the living room creates a cozy atmosphere. The primary heating source is a gas boiler.

The residential district, with its **authentic atmosphere**, was built in the middle of the 20th century. It stands out for its **abundance of greenery**, streets lined with **mature trees**, and several nearby playgrounds. The building is located right next to **Na Solidaritě Park**, close to shops, cafes, a kindergarten, an elementary school, and a tram stop. A metro station (line A) is also within walking distance.

Usable area 127 m², garden 92 m², plot of land 148 m².

The property is approved as a housing unit.

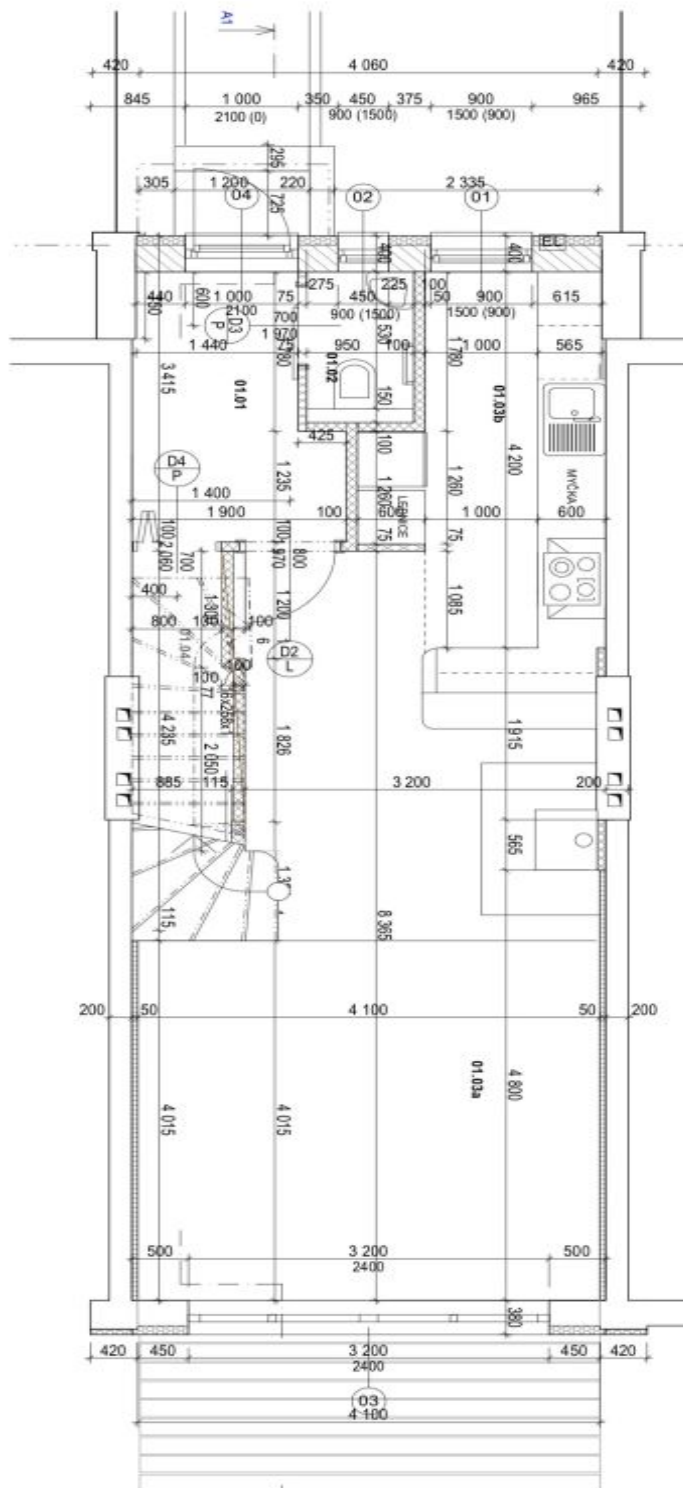




House Three-bedroom (4+kk)

Ask for price

127 m², Prague 10, Strašnice, Solidarity



Tabuľka miestnosti 1.NP							
číslo miestnosti	Název miestnosti	Plocha (m ²)	podlaha	skladba	steny 1 radok	strop 1 radok	poznámka
01	CHODBA	4,96	keram. dlažba, soklik 80	P4,1	om. VPC, štuk, 2x maľba	om. VPC, štuk, 2x maľba	
02	WC	1,36	keram. dlažba	P4,1	ker. obklad, v 2100mm	om. VPC, štuk, 2x maľba	
03a	OBÝVAJACI POKOJ	28,33	parketová podlaha, lisa 50	P2,1	om. VPC, štuk, 2x maľba	om. VPC, štuk, 2x maľba	
03b	KUCH. KOUT	7,74	keram. dlažba, soklik 80	P4,1	om. VPC, štuk, 2x maľba	om. VPC, štuk, 2x maľba	obklad za kuch. k.
04	SKLAD	2,53	keram. dlažba, soklik 80	P4,1	om. VPC, štuk, 2x maľba	schodiskový drevený podhľad	snižená výška
		44,92 m ²					



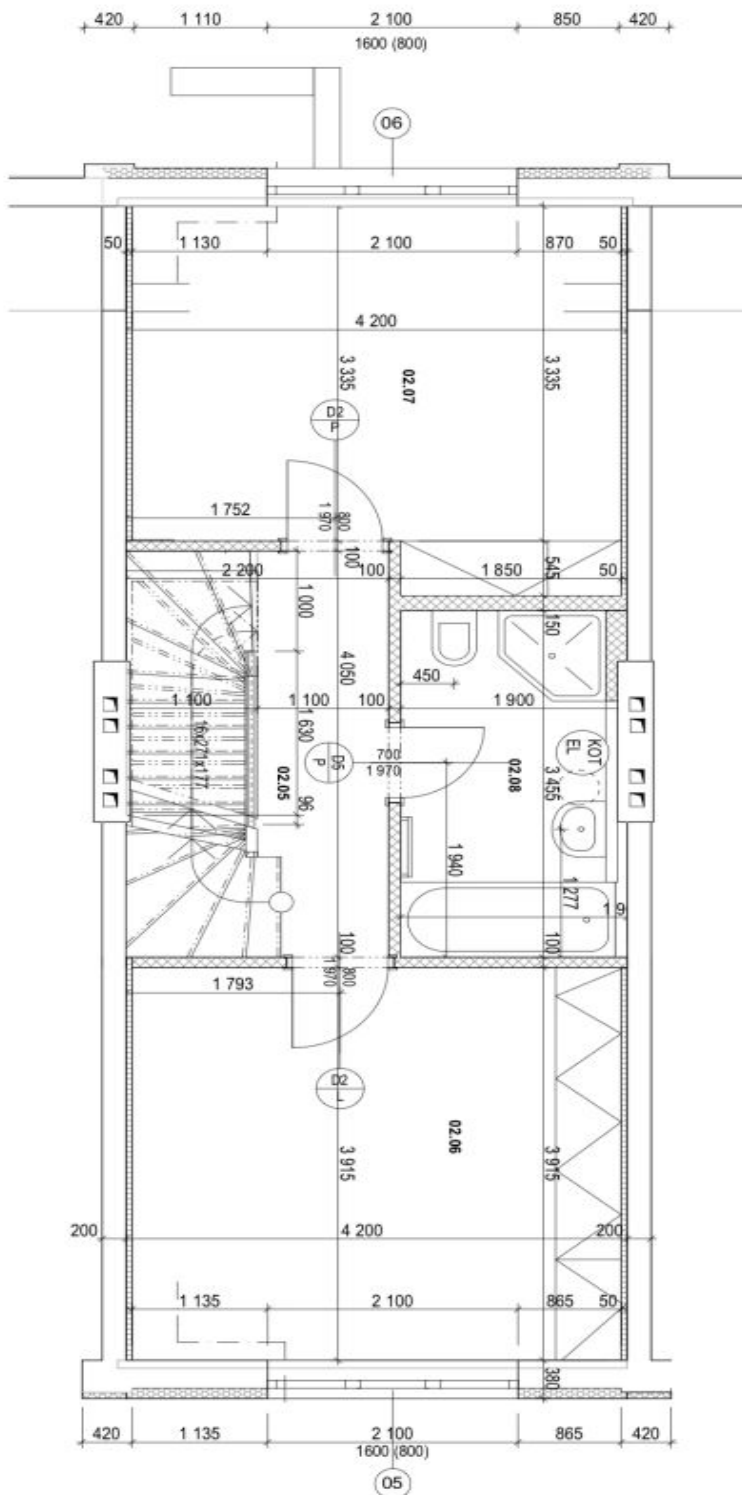


House Three-bedroom (4+kk)

Ask for price

127 m², Prague 10, Strašnice, Solidarity

Tabuľka miestností 2.NP							
Číslo miestnosti	Název miestnosti	Plocha (m ²)	podlaha	skladba	steny 1 radok	strop 1 radok	poznámka
05	CHODBA	5,07	keram.dlažba, soklik 80	P4	om, VPC, štuk, 2x maľba	om, VPC, štuk, 2x maľba	
06	POKOJ	16,05	laminat, podl. lišta 50	P2	om, VPC, štuk, 2x maľba	om, VPC, štuk, 2x maľba	
07	POKOJ	14,88	laminat, podl. lišta 50	P2	om, VPC, štuk, 2x maľba	om, VPC, štuk, 2x maľba	
08	KOUPELNA	6,14	keram.dlažba	P4	ker.obklad v 2100mm	om, VPC, štuk, 2x maľba	
		41,94 m ²					



S





House Three-bedroom (4+kk)

Ask for price

127 m², Prague 10, Strašnice, Solidarity

