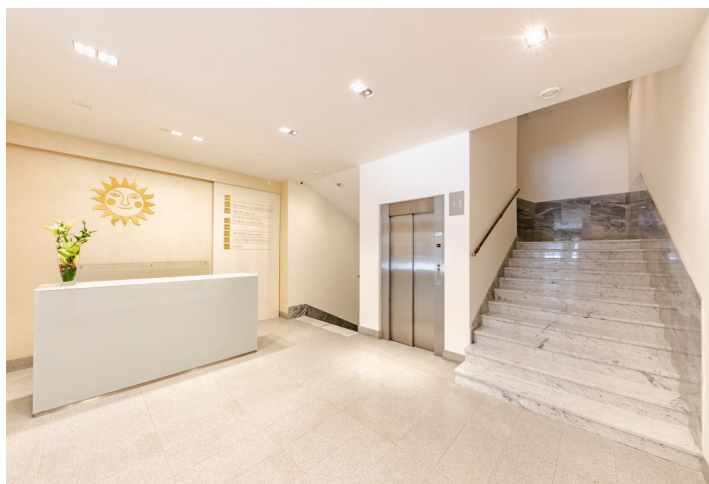




Office space

Rented

Praha 1, Staré Město, Na příkopě



**Office space****Rented**

Praha 1, Staré Město, Na příkopě

Service price	176 CZK monthly per m ²
Available area	207 m ²
Cellar	-
Parking	Yes
PENB	D
Reference number	101088

Office space for lease on the 6th floor in a representative building built in Functionalist style located in the financial and commercial center of Prague. The spaces are located in one of the first city constructivist palaces in the center of Prague. Significant elements of the building included, for example, the ground floor of the building with shop windows and the entrance to the passage or an advertising sign on the corner.

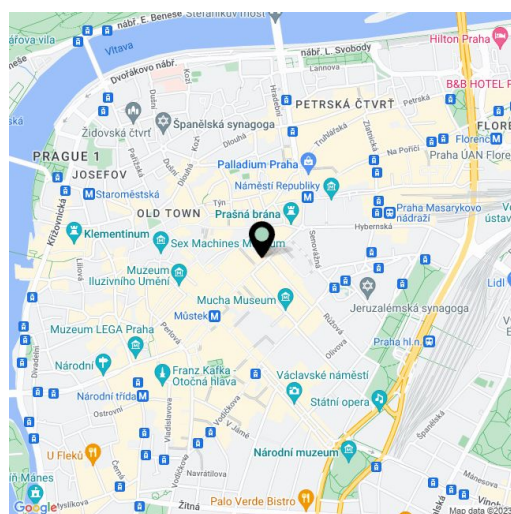
Location:

Outstanding accessibility by car and public transportation – within walking distance of the Můstek (lines A, B), Náměstí Republiky (line B) and Muzeum (line C) metro stations, moments from tram stop and close to the city highway with direct connection to the D1 highway. Train stations Masarykovo Nádraží and Hlavní Nádraží less than 5 minutes walking distance.

Features and Services:

- Representative reception
- 24/7 access and security service
- Fan-coil cooling units
- Parking in the garage

Rental and service charges listed without VAT. Lessee pays no commission.





Office space

Praha 1, Staré Město, Na příkopě

Rented

