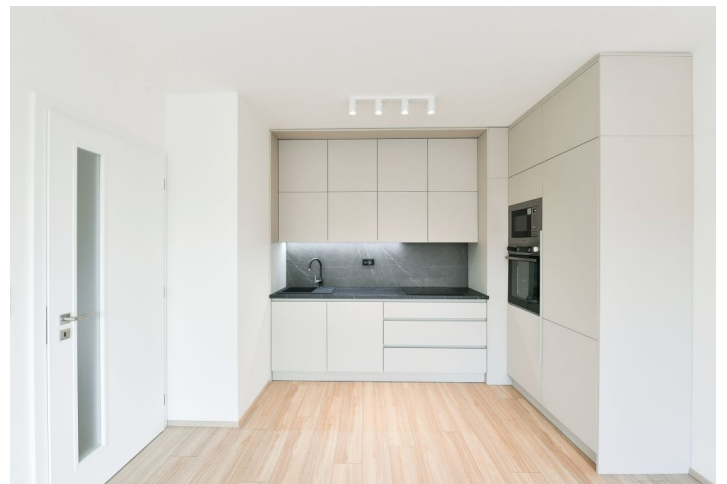




Apartment One-bedroom (2+kk)

Rented

52.2 m², Prague 7, Holešovice, V háji





Apartment One-bedroom (2+kk)

Rented

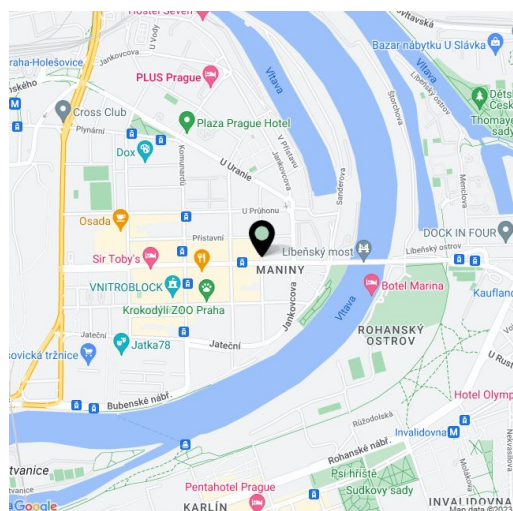
52.2 m², Prague 7, Holešovice, V háji

Total area	56 m ²
Floor area*	52 m ²
Balcony	4 m ²
Parking	One parking space available.
Garage	Yes
Cellar	Yes
Service price	Monthly deposit for common building charges, water, and heating CZK 4,500. Electricity - transferred to the tenant.
Reference number	101092
Available from	Immediately

This apartment is in a new residential complex in Prague's Holešovice neighborhood, originally an industrial district, today a modern cultural and artistic mecca in the wider center of Prague with full civic amenities and excellent transport accessibility. Separated on one side by the Vltava River, and on the other by Stromovka Park and Letenské Sady Park. Within walking distance of the Prague Market and Výstaviště.

The apartment offers a living room with a fully equipped kitchen and access to the balcony, a bedroom, a bathroom with a shower, sink, and toilet, and an entrance hall.

Plenty of storage space, built-in wardrobes in the hall and the bedroom, central heating, dishwasher, induction hob, built-in microwave oven, video intercom, and a cellar. One parking space available for CZK 3,000/month.



* Area of the unit according to the Civil Code. The area consists of the sum total area of the entire unit bounded by perimeter walls.



Apartment One-bedroom (2+kk)

Rented

52.2 m², Prague 7, Holešovice, V háji

Vyměry		
7.11.01	Předstíř	4,5 m ²
7.11.02	Obytná místnost	24,3 m ²
7.11.03	Koupelna	4,4 m ²
7.11.04	Ložnice	16,3 m ²
Celková vnitřní užitná plocha		49,5 m ²
Celková podlahová plocha		52,31 m ²
7.11.05	Balkon	3,5 m ²

