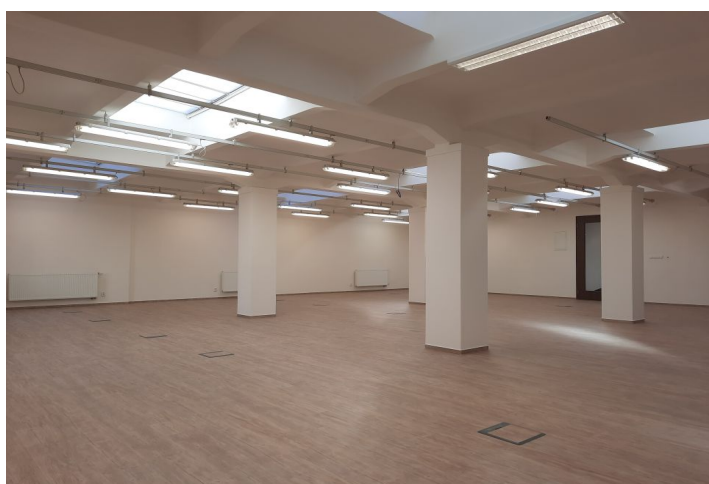
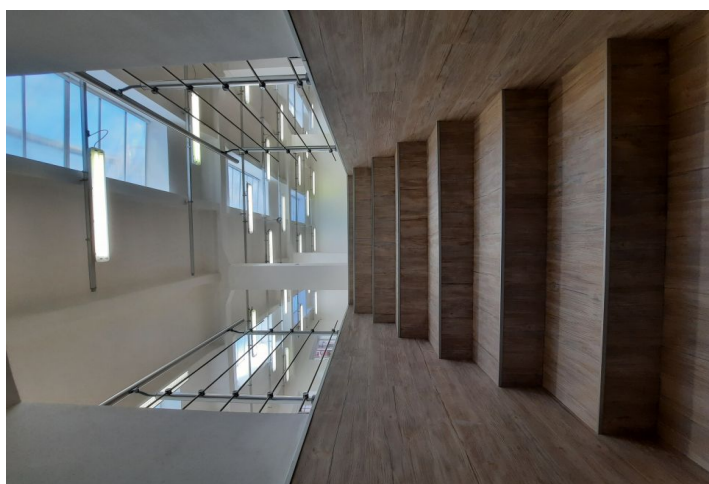




# Office space

Prague 3, Žižkov, Štítného

€ 8.33 / m<sup>2</sup> | CZK 210 / m<sup>2</sup>



**Office space**

Prague 3, Žižkov, Štítného

**€ 8.33 / m<sup>2</sup> | CZK 210 / m<sup>2</sup>**

<b>Available area</b>	423 m <sup>2</sup>
<b>Cellar</b>	-
<b>Parking</b>	Yes
<b>PENB</b>	G
<b>Reference number</b>	101102

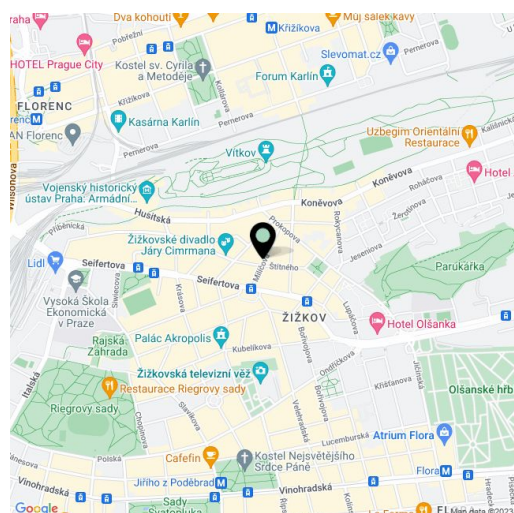
Bright office space for lease on the ground floor of an apartment building in Prague's Žižkov district. Separate offices after complete reconstruction - a large room (190 sq. m), a smaller room (108.5 sq. m) and a separate room (91 sq. m) in a separate layout on the ground floor of the main building. 2 parking spaces available. The space is suitable for 40 people. Entrance directly from the street.

**Location:**

Great accessibility by public transport. Close to the tram stop Lipanská about 300 m and the train station Hlavní nádraží and the metro station Hlavní nádraží (line C). All civic amenities nearby.

**Features and Services:**

- 2 parking spaces
- Camera system
- Security system
- Code/phone/chip/card locks
- Security door
- Vinyl
- Carpets
- Double floors
- Fibre optic cable
- Cable distribution
- Server room
- LED lighting
- Kitchenette
- New gas boiler room
- Heating



Rental and service charges listed without VAT. Lessee pays no commission.



# Office space

Prague 3, Žižkov, Štítného

€ 8.33 / m<sup>2</sup> | CZK 210 / m<sup>2</sup>

