



Apartment Two-bedroom (3+kk)

Rented

96 m², Prague 6, Vokovice, Nobelova





Apartment Two-bedroom (3+kk)

Rented

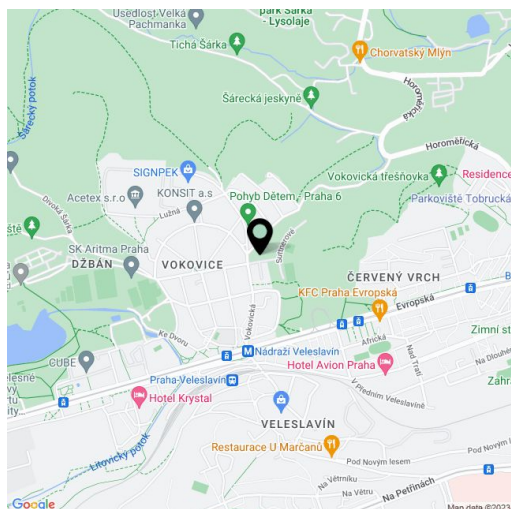
96 m², Prague 6, Vokovice, Nobelova

Total area	102 m ²
Floor area*	96 m ²
Balcony	6 m ²
Parking	Garage parking.
Garage	Yes
Cellar	Yes
Service price	Service charges and utilities in the amount of CZK 10,000/month are billed separately.
Reference number	101141
Available from	Immediately

Benefiting from a balcony and nice views, this 2-bedroom apartment is on the 3rd floor in the modern residential complex Na Krutci, designed by Kuba & Pilař architectural studio, with a 24/7 reception and security, a sports center and a tennis court. Conveniently located for the airport and international schools in Prague 6, with quick connections to the city center. Set on the edge of the Šárka protected natural preserve, area with full amenities within easy reach, just five min. to Nádraží Veleslavín tram stops and metro station.

The interior features a living room with a fully fitted open plan kitchen and a balcony, a master bedroom with a large built-in wardrobe, a children's bedroom, a bathroom (walk-in shower, bathtub, bidet, toilet), a utility room / toilet, and an entrance hall with a built-in wardrobe.

Hardwood floors, tiles, underfloor heating in the bathroom, security entry door, gas boiler, washing machine, dryer, dishwasher, video entry phone, cellar, lift. A garage parking space is included.



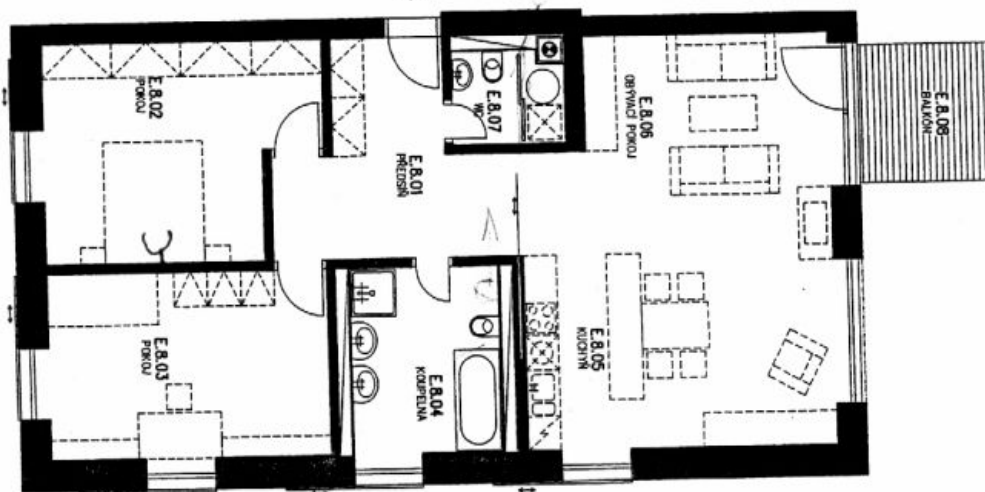
* Area of the unit according to the Civil Code. The area consists of the sum total area of the entire unit bounded by perimeter walls.



Apartment Two-bedroom (3+kk)

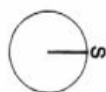
Rented

96 m², Prague 6, Vokovice, Nobelova



1
2
3

10 m



BYTE 4.8 bytový dům E

OZN.	MÍSTNOST	m ²
E.8.01	předsín	12,52
E.8.02	pokoj	17,28
E.8.03	pokoj	16,35
E.8.04	koupelna	8,72
E.8.05	kuchyň	7,07
E.8.06	obývací pokoj	30,58
E.8.07	WC + kotel	3,20
celková plocha bytu		95,72
E.8.08	balcón	5,76
celková plocha balkónu		5,76