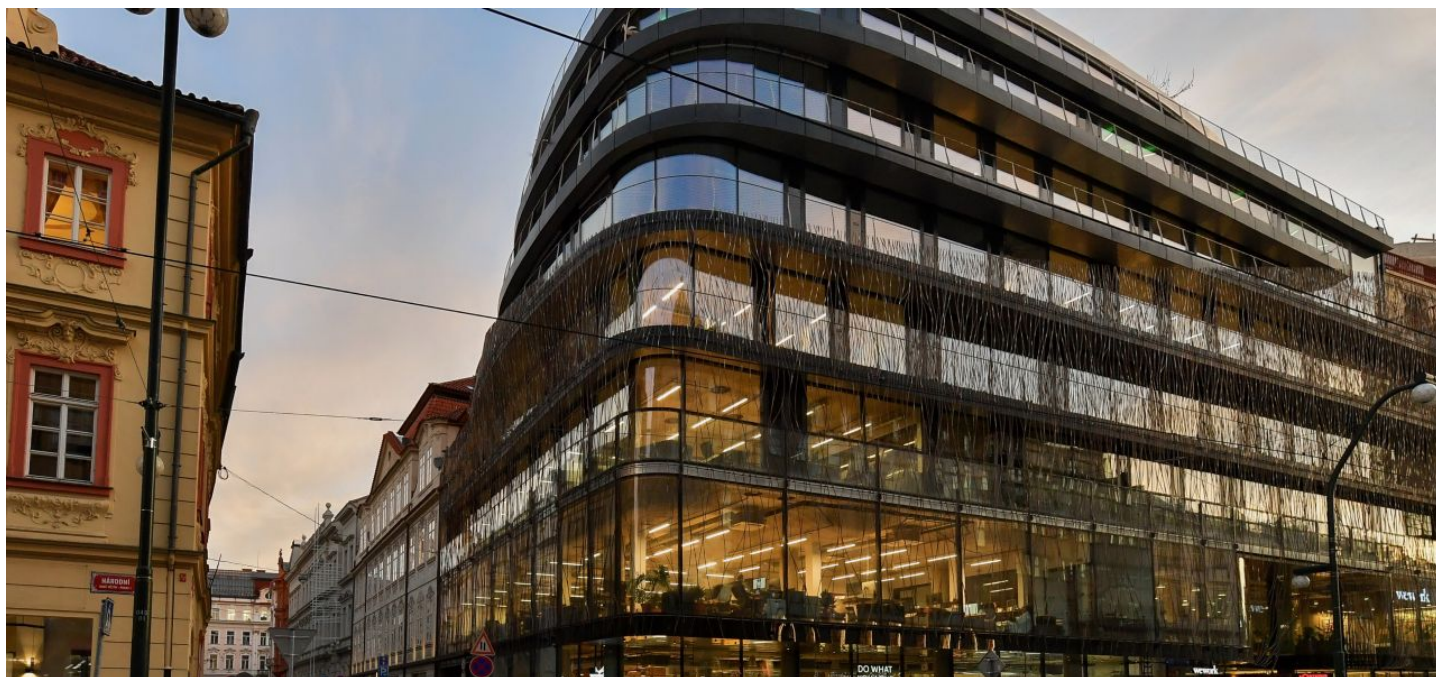




## Office space

Praha 1, Nové Město, Národní

Rented





Praha 1, Nové Město, Národní

Service price	150 CZK monthly per m <sup>2</sup>
Available area	289 m <sup>2</sup>
Cellar	-
Parking	EUR 300 / pp / month
PENB	B
Reference number	101165

Fully furnished office space for lease on the 2nd floor of a complex created by the thorough reconstruction of the Baroque Schönkirch Palace on Mikulandská Street and the completion of the cross wing and new building next door on the corner of Národní and Mikulandská streets. The open space has a capacity of up to 30 people as well as space for an entrance reception. Shared rooftop green terrace with beautiful views of the city. Underground parking entered from Mikulandská Street and facilities for cyclists—showers, lockers, racks.

Net area 289 sq. m, gross area 344 sq. m.

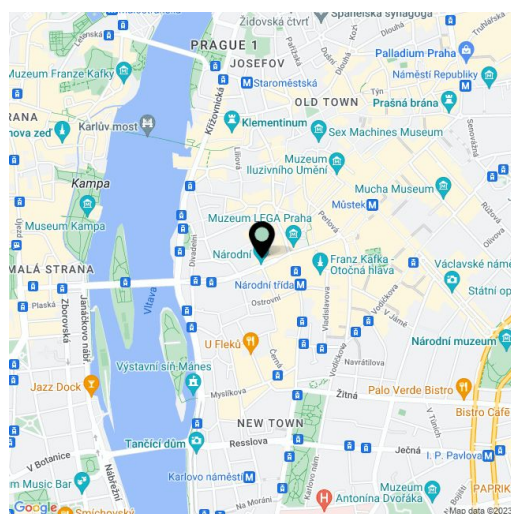
#### Location:

The complex is located in close proximity to the National Theater. Excellent accessibility by public transport—close to the Narodni trida metro station (line B) and tram stops. In the vicinity of complete civic amenities.

#### Features and Services:

- Meeting rooms
- Kitchenette
- Toilets
- Underground parking
- Openable windows
- Sprinklers
- 24/7 building access and security
- Facilities for cyclists—showers, lockers, racks
- 1-3 parking spaces
- Restaurant

Rental and service charges listed without VAT. Lessee pays no commission.

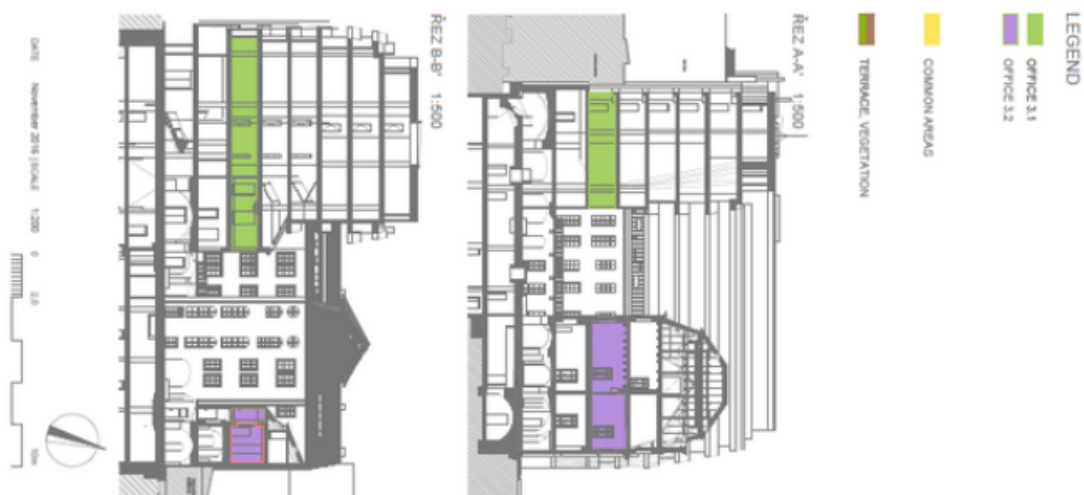




# Office space

Praha 1, Nové Město, Národní

Rented





# Office space

Praha 1, Nové Město, Národní

Rented

