



Apartment One-bedroom (2+kk)

Rented

44 m², Prague 9, Hloubětín, Třešňová





Apartment One-bedroom (2+kk)

Rented

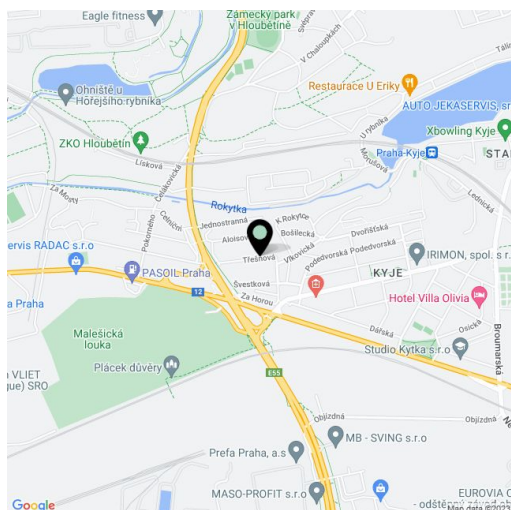
44 m², Prague 9, Hloubětín, Třešňová

Total area	44 m ²
Parking	Garage parking.
Garage	Yes
Cellar	Yes
Service price	Monthly deposit for services and energies CZK 3,500. Electricity is paid separately.
PENB	B
Reference number	101319
Available from	Immediately

This brand new, unfurnished apartment is on the second floor of a residential building with a shared garden situated in Hloubětín, Prague 9, in the immediate vicinity of Malešice and Kyje. The building is set in a quiet residential area in close vicinity of the local forest park and the Rokytka Stream. The closest metro station is Hloubětín. There are bus stops nearby with connections to the metro, within easy reach of the Fashion Arena, Retail Park Šterboholý, and Europark shopping centers.

The interior features a living room with a fully fitted open plan kitchen and dining area, a bedroom, a shower room with a toilet, and an entrance hall with a built-in wardrobe.

Vinyl floors, tiles, security entry door, blinds, central heating, washing machine, dishwasher, induction cooktop, microwave oven, **cellar**, bike/pram storage in the building. No elevator. A **garage parking** space is included.



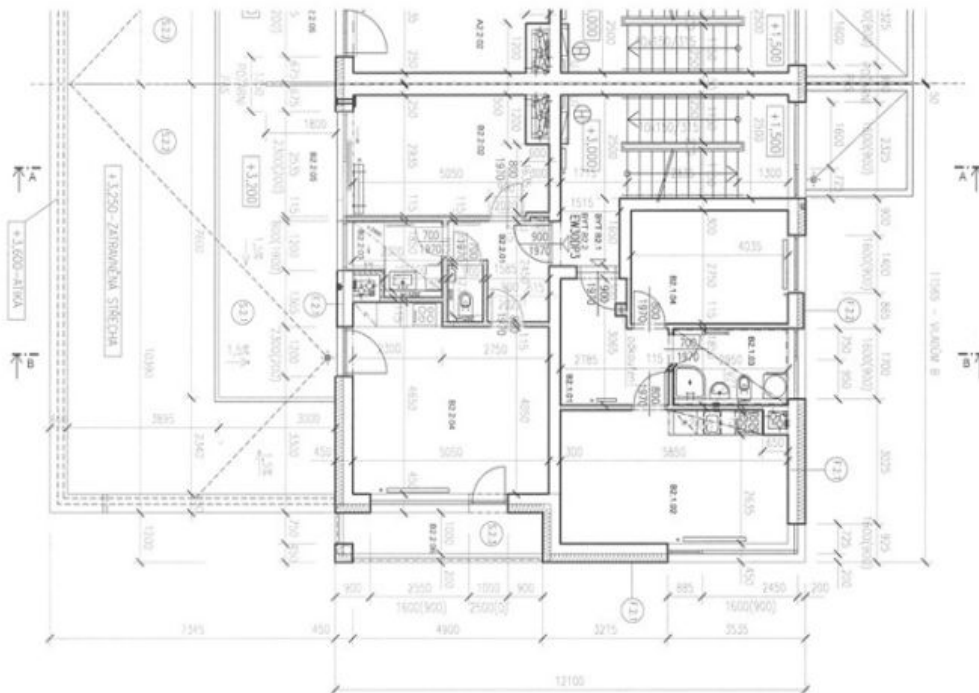
* Area of the unit according to the Civil Code. The area consists of the sum total area of the entire unit bounded by perimeter walls.



Apartment One-bedroom (2+kk)

44 m², Prague 9, Hloubětín, Třešňová

Rented



LEGENDA MÍSTNOSTI - 2NP - DOM B

Číslo	Účel místnosti	Prostřední plocha
82.1	OBECNÁ SKLOPKOVNĚ	142
82.1.01	BRF 82.1 - 2WK	412
82.1.02	Průchod	72
82.1.03	OBECNÁ KUCHYŇKA - WC	143
82.1.04	KUCHYŇKA	49
82.1.05	BRF 82.1 - 2WK	439
82.1.06	POKOID	128
82.1.07	PRŮCHOD	46
82.1.08	POKOID	127
82.1.09	KUCHYŇKA	32
82.1.10	OBECNÁ KUCHYŇKA - KLOZOVNĚ	214
82.1.11	TRUSLKA	213
82.1.12	BALKÓN	53
82.1.13	WC	19

REKONSTRUČNÍ ÚPRAVY
 ÚVĚRY A ÚPRAVY
 11.12.2022 12:41