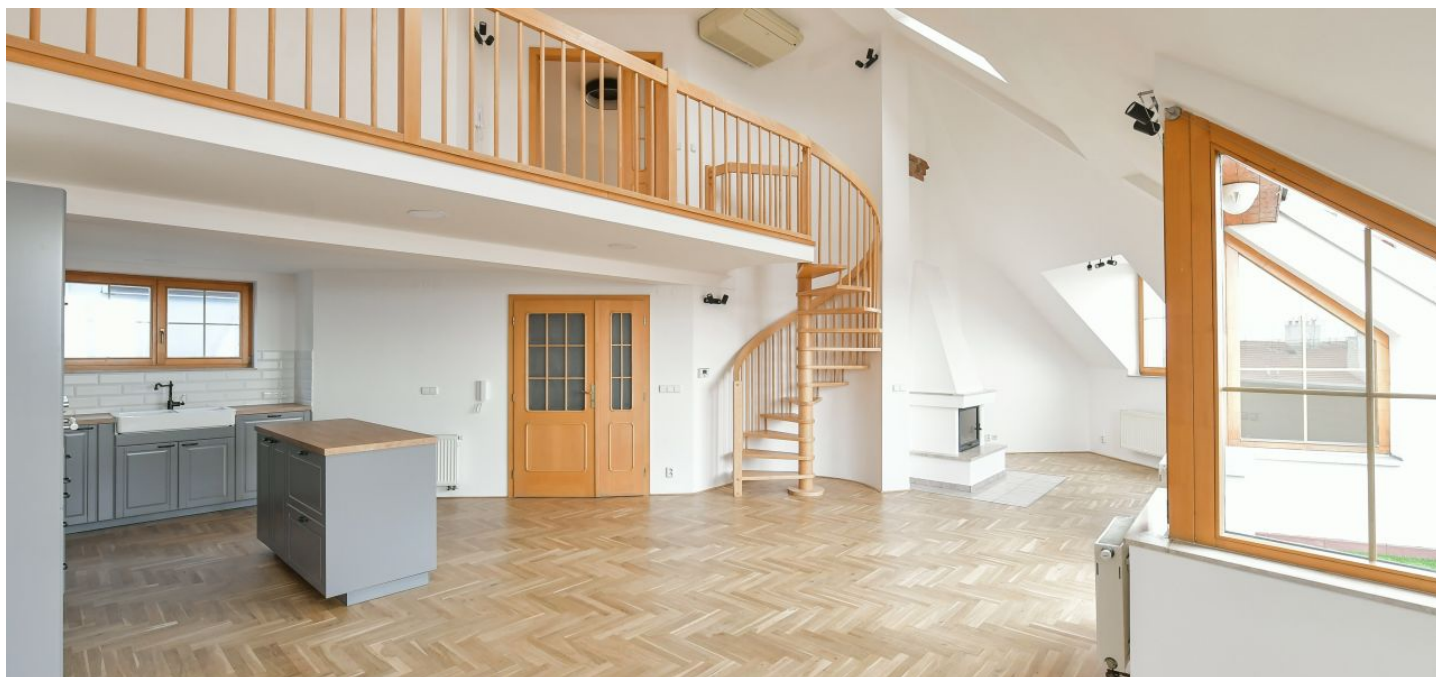




## Apartment Two-bedroom (3+kk)

Rented

132 m<sup>2</sup>, Prague 2, Vinohrady, Lužická





## Apartment Two-bedroom (3+kk)

Rented

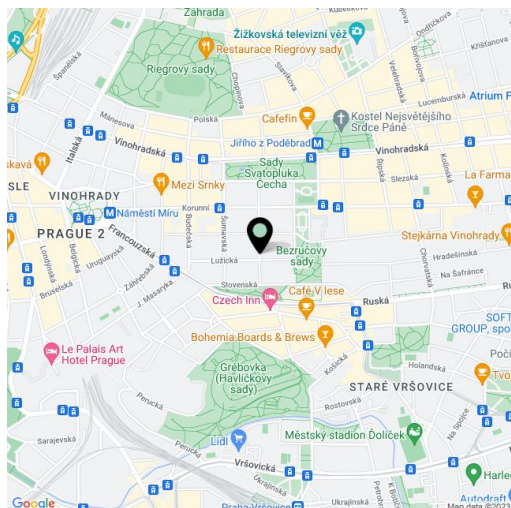
132 m<sup>2</sup>, Prague 2, Vinohrady, Lužická

Total area	139 m <sup>2</sup>
Floor area*	132 m <sup>2</sup>
Terrace	7 m <sup>2</sup>
Parking	-
Cellar	-
Service price	Deposit for service charges CZK 2000/month. Energies are billed separately.
Reference number	101320
Available from	Immediately

This is a south facing renovated unfurnished 2-bedroom 2-bathroom split-level attic apartment boasting 2 terraces with beautiful far reaching views of Prague. Set on the 5th floor of a renovated residential building with a lift on a quiet tree-lined street in the highly sought-after residential neighborhood of Vinohrady, with several parks in close vicinity. Location with quick access to the city center - a few min. to the Náměstí Míru and Jiřího z Poděbrad metro stations, with full amenities, shopping and entertainment within easy reach.

The lower floor includes a living room with a fireplace, a fully fitted open plan kitchen and **terrace** access, a bedroom with an en-suite bathroom (bathtub) and a **walk-in closet**, a separate toilet, a utility room, and an entrance hall with built-in wardrobes. The upper level of the apartment features a gallery, plus a second bedroom with a **terrace**, a **walk-in closet** and a bathroom (walk-in shower, bidet, toilet).

**Air-conditioning, hardwood parquet floors**, tiles, wooden circular staircase, security entry door, wood burning **fireplace**, gas boiler, new kitchen, dishwasher, induction cooktop, microwave oven, **cellar**.



\* Area of the unit according to the Civil Code. The area consists of the sum total area of the entire unit bounded by perimeter walls.