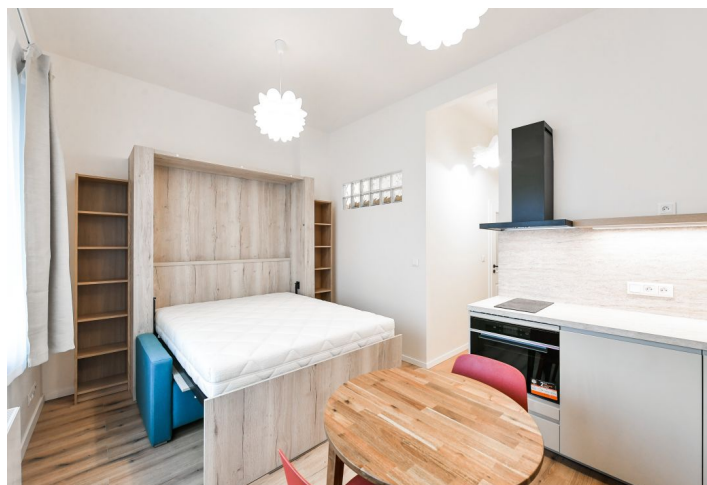




Apartment Studio (1+1)

31.8 m², Praha 5, Smíchov, Na Čecheličce

Rented





Apartment Studio (1+1)

Rented

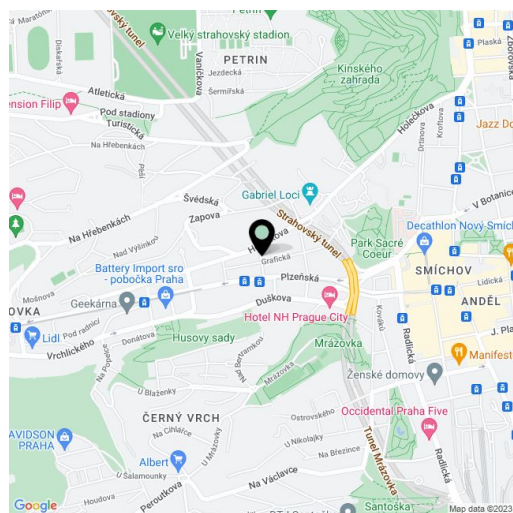
31.8 m², Praha 5, Smíchov, Na Čecheličce

Total area	32 m ²
Parking	-
Cellar	-
Service price	Monthly deposit for services and water: CZK 1,200. Electricity is billed separately.
PENB	G
Reference number	101341
Available from	Immediately

This new furnished apartment is on the first floor of a completely renovated building with an elevator near the Anděl pedestrian zone in Smíchov and Sacré Coeur Park. The classic apartment building is located about a 10-minute walk or 1 tram stop from the Anděl zone with a full range of amenities and services. Within easy reach is the French School and the Bertramka and Husovy Sady parks, and it takes just ten minutes to get to Petřín Hill.

The apartment includes a courtyard-facing living room with a fully fitted open plan kitchen and a sofa bed, a windowless study, a bathroom (walk-in shower, toilet), and an entrance hall.

Laminate floors, tiles, security entry door, double sofa bed, electric heating, washer/dryer, induction cooktop, combination/microwave oven.



* Area of the unit according to the Civil Code. The area consists of the sum total area of the entire unit bounded by perimeter walls.