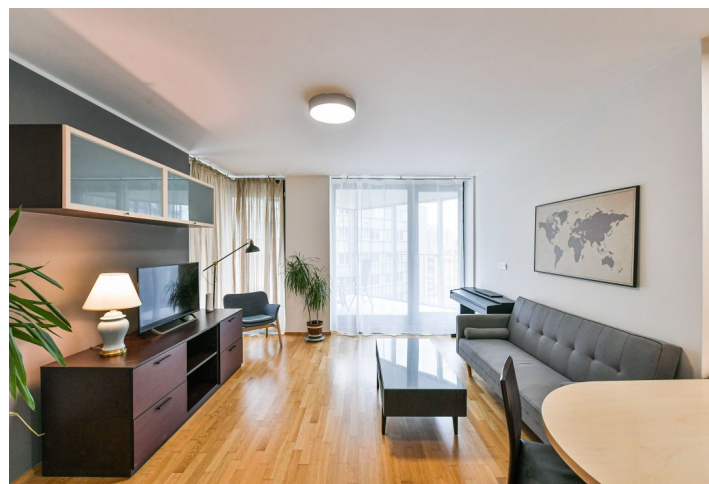




Apartment One-bedroom (2+kk)

Rented

66.07 m², Prague 3, Žižkov, Pitterova





Apartment One-bedroom (2+kk)

Rented

66.07 m², Prague 3, Žižkov, Pitterova

Total area	85 m ²
Floor area*	66 m ²
Terrace	19 m ²
Parking	Garage parking.
Garage	Yes
Cellar	Yes

Service price Monthly deposit for service charges, water, and heating: CZK 6,000. Electricity is billed separately (transferred to the tenant).

PENB C

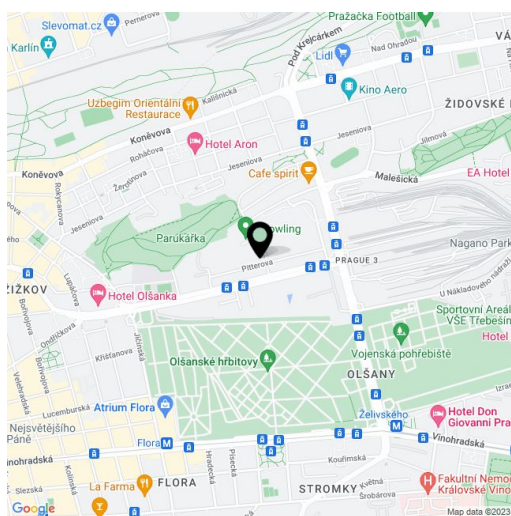
Reference number 101360

Available from Immediately

This furnished air-conditioned 1-bedroom apartment with a terrace is on the 5th floor of the Central Park contemporary gated residential project with a private park, a 24/7 reception, underground parking, and security. Located in the immediate vicinity of Parukářka Park, with full amenities and services within easy reach (Olšanská clinic, post office, sports facilities, and shopping) and quick access to the city center (multiple tram lines, nearby Želivského metro station).

The apartment includes a living room with a fully fitted open plan kitchen and dining area, a bedroom, a bathroom (bathtub with a shower screen, toilet), and an entrance hall. The **terrace** is accessible from both main rooms.

Air-conditioning, hardwood floors, tiles, security entry door, ample storage, automatic exterior blinds, washing machine, dishwasher, microwave oven, video entry phone, **cellar.** A **garage parking** space is available at CZK 2,000/month.



* Area of the unit according to the Civil Code. The area consists of the sum total area of the entire unit bounded by perimeter walls.



Apartment One-bedroom (2+kk)

Rented

66.07 m², Prague 3, Žižkov, Pitterova

Podhledy SDK sntzeny dle potřeby rozvodit instalaci.
Výškové úrovně teras jsou podle technických norem.
Gypsum ceilings produced by installing the appropriate level.
Level terraces, under the technical standards

v.p. - výška parapetu / height of parapet
T.M. - technická místnost / Utility room
Stavební kód / Building code: A3.6.4.

Rezidence A3.6.4.

2+kk 1-bedroom 6. patro 6th Floor

Shrnutí Summary

Podlaží Floor	6
Objekt Building	A3
Orientace Orientation	JZ SW
Podlahová plocha Living Floor Area	66.07 m ²
Výměra teras Terraces Area	18.98 m ²
Výměra zahrady Garden Area	0 m ²
Výměra sklepu Cellar Area	5.65 m ²