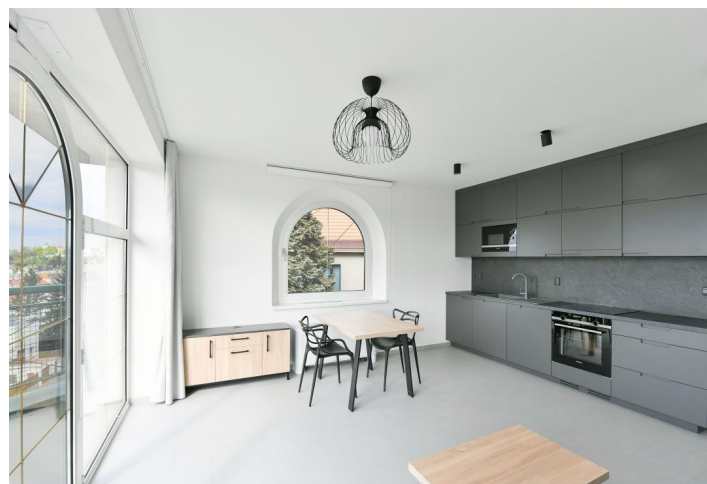




Apartment One-bedroom (2+kk)

Rented

42 m², Prague 4, Podolí, Pod Klauďiánkou





Apartment One-bedroom (2+kk)

Rented

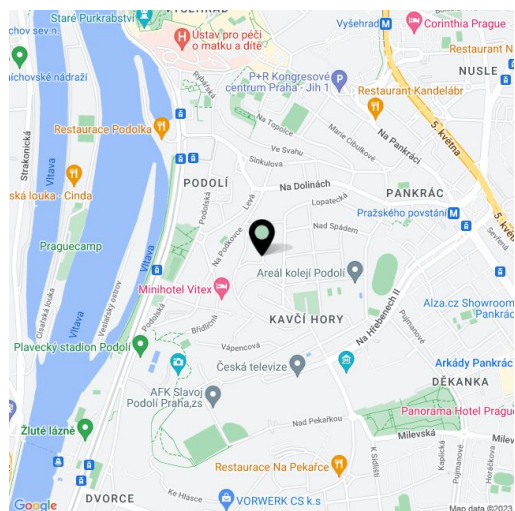
42 m², Prague 4, Podolí, Pod Klaudiánkou

Total area	42 m ²
Parking	-
Cellar	Yes
Service price	Monthly deposit for services and utilities CZK 5,000.
PENB	B
Reference number	101692
Available from	Immediately

This newly refurbished fully furnished apartment with a terrace and impressive views of the city, Prague Castle, Vyšehrad Castle, and the Vltava River is situated on the third floor of a newly renovated building with an elevator, in a quiet Prague 4 neighborhood near the Czech TV grounds and several parks, within easy reach of the Pražského povstání metro station (line C). Conveniently located for full amenities and services, the Pankrác business center, and Prague 4 international schools. Located a few min. from the Podolí swimming pool, sports grounds (tennis, football and basketball courts, and a parkour playground), a popular bike path, the Kublov outdoor fitness park, and the Žluté lázně spa.

The interior features a living room with a fully fitted open plan kitchen and access to the **terrace**, a bedroom with built-in wardrobes, a bathroom including a walk-in shower and toilet, and an entrance hall with built-in wardrobes.

Air-conditioning, custom-made equipment, vinyl floors, tiles, washer/dryer, dishwasher, induction cooktop, microwave oven, video entry phone, **cellar**.



* Area of the unit according to the Civil Code. The area consists of the sum total area of the entire unit bounded by perimeter walls.