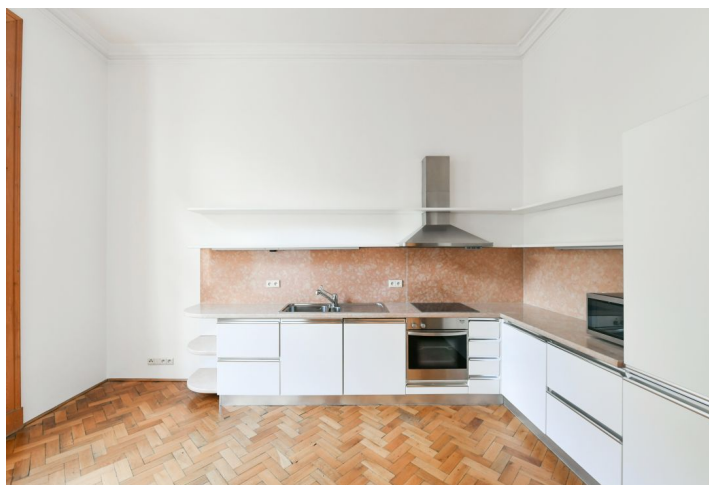




## Apartment Three-bedroom (4+1)

Rented

170 m<sup>2</sup>, Prague 2, Vinohrady, Ibsenova





## Apartment Three-bedroom (4+1)

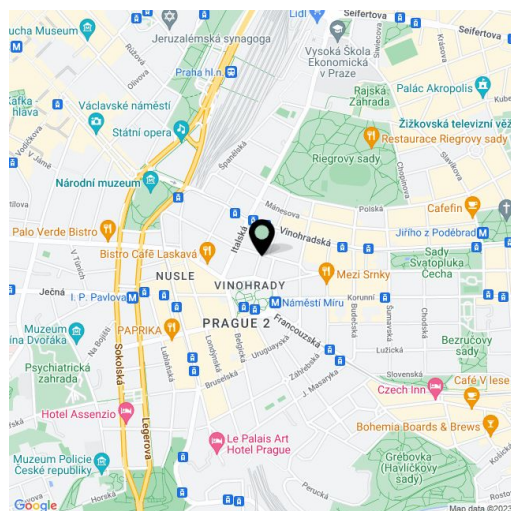
**Rented**170 m<sup>2</sup>, Prague 2, Vinohrady, Ibsenova

Total area	176 m <sup>2</sup>
Floor area*	170 m <sup>2</sup>
Balcony	6 m <sup>2</sup>
Parking	One underground garage parking space included.
Cellar	-
PENB	G
Reference number	10177
Available from	Immediately

This stylishly fully furnished 3-bedroom 2-bathroom apartment is on the 2nd floor of a building with an elevator that is one of the most beautifully renovated and outstanding examples of Neo-Classic architecture in Vinohrady. Located in a highly sought-after residential neighborhood with full amenities and quick access to the center, mere steps from the Náměstí Míru metro station and tram stop.

Spacious airy rooms: a living room with a bay window and lovely views of Náměstí Míru Square, a formal dining room, 3 bedrooms (one with a balcony facing the green courtyard), 2 en-suite bathrooms, a lovely eat-in kitchen with stone counters, a spacious entry hall, and a laundry room.

Features include high ceilings, large windows, original parquet floors, original nicely refinished woodwork, built-in wardrobes, marble bathrooms, gas heating, security door, washer, dryer, dishwasher. Satellite connections, alarm. One garage parking space included in the price. Deposit for common building charges and utilities CZK 10,000/month.



\* Area of the unit according to the Civil Code. The area consists of the sum total area of the entire unit bounded by perimeter walls.