



Apartment One-bedroom (2+kk)

Sold

56.59 m², Jindřichův Hradec, Třeboň, Svobody





Apartment One-bedroom (2+kk)

Sold56.59 m², Jindřichův Hradec, Třeboň, Svobody

Total area	62 m ²
Floor area*	57 m ²
Loggia	6 m ²
Parking	Parking space at extra cost
Garage	Yes
Cellar	Yes
PENB	B
Reference number	101828

This 1-bedroom apartment with a loggia is part of the **Nová Cihelna** project, which is currently being built on the site of a former brickyard that was founded in the 17th century, located in the picturesque spa town of Třeboň. Part of a UNESCO biosphere reserve, it lies in the middle of a romantic landscape, ideal for cyclists, fishermen, and lovers of wellness and relaxation. The apartment is suitable for permanent or recreational living as well as for investment purposes. **Estimated completion date in September of 2026.**

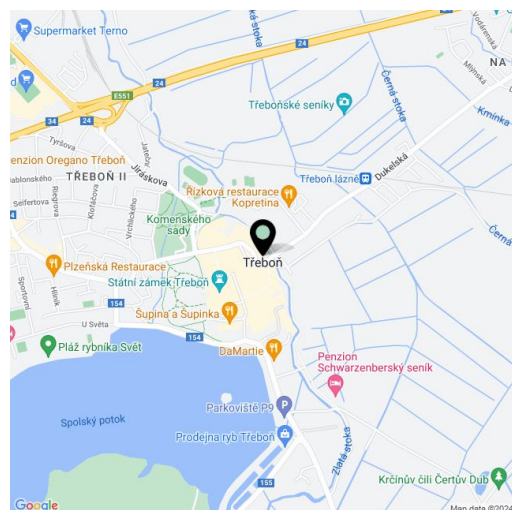
The area of the 1st floor apartment will consist of a living space with a preparation for a kitchen, a bedroom, a bathroom (shower, toilet, sink), a utility room, and an foyer. The living room will have access to a **south-facing loggia**.

The facilities include **underfloor heating**, large-format plastic windows with **triple-glazed panes**, quality vinyl floors, a security entrance door, large-format tiles in the bathroom, and **Grohe** sanitary ware in the modern dark shade of **Hard Graphite**. It is necessary to purchase a **parking space and a cellar storage unit**.

The Nová Cihelna residential project is located in a **quiet part of Třeboň**; it will be within walking distance of the **Aurora Spa** or the **beaches of Svět pond**. You can easily get to the uniquely preserved historic core of the town on foot or by bike. With a **rich spa tradition and lively food scene**, it's located in one of the most sought-after recreational places in the Czech Republic, excellently accessible by car, for example, via the D3 highway, but also by public transport (the train station is on the main railway corridor).

Floor area 56.59 m², loggia 5.87 m².

For more information, please visit the project website www.nova-cihelna.cz.



* Area of the unit according to the Civil Code. The area consists of the sum total area of the entire unit bounded by perimeter walls.



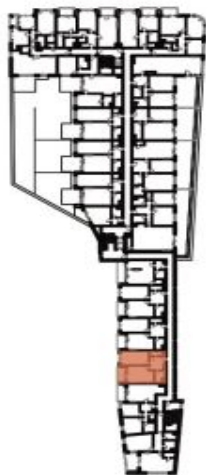
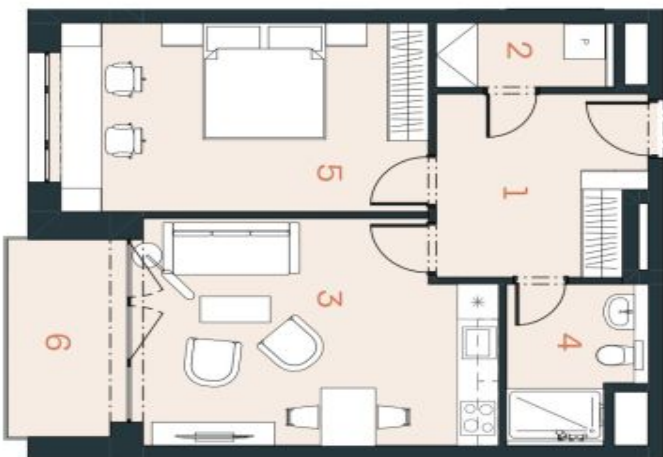
Apartment One-bedroom (2+kk)

Sold

56.59 m², Jindřichův Hradec, Třeboň, Svobody

NOVÁ CIHELNA

TŘEBOŇ



JEDNOTKA	2.28
DISPOZICIE	2+KK
PODLAŽÍ	2.NP
Č. Místnost	m²
1 Předsiň	9,64
2 Technická místnost	2,95
3 Obýtný pokoj + KK	20,19
4 Koupelna	5,06
5 Ložnice	17,80
Užitná plocha**	55,65
Podlahová plocha*	56,59
6 Lodžie	5,87
Celková plocha	62,46

*Projekt Nová Cihelna Třeboň si vyhrazuje právo na změny. Všechny materiály a informace jsou pouze orientační. Součástí kupní ceny bytu není nábytek. Podlahová plocha bytu je včetně ploch přilek a vnitřních nosných stěn dle výšního nariadení 3566/2013 Sb.
**Užitná plocha je včetně inštaláčion přístěn bytu.

EXKLUZIVNÍ ZASTOUPENÍ
svoboda&williams | CHRISTIE'S
INTERNATIONAL REAL ESTATE
Na Perštýně 2, 110 00, Praha 1
+420 724 551 238
nova-cihelna.cz
Info@nova-cihelna.cz