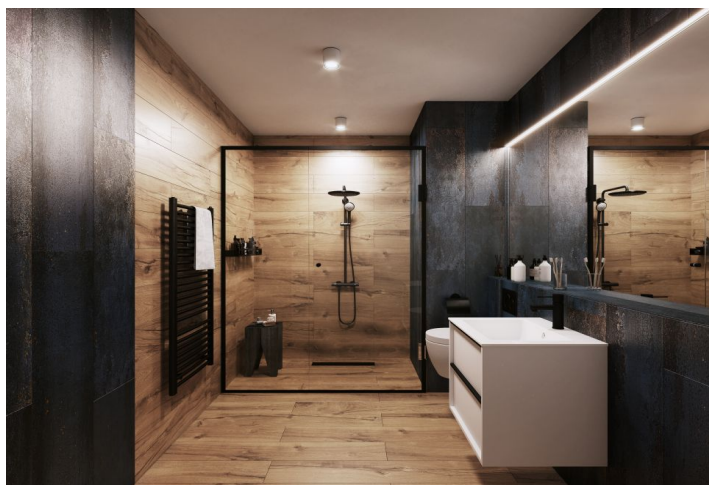




Apartment Two-bedroom (3+kk)

€ 482 918 | CZK 12 196 100

79.71 m², Jindřichův Hradec, Třeboň, Svobody





Apartment Two-bedroom (3+kk)

€ 482 918 | CZK 12 196 100

79.71 m², Jindřichův Hradec, Třeboň, Svobody

Total area	118 m ²
Floor area*	80 m ²
Terrace	38 m ²
Garden	35 m ²
Parking	Parking space at extra cost
Garage	Yes
Cellar	Yes
PENB	B
Reference number	101837

This 2-bedroom apartment with a terrace and a garden is part of the Nová Cihelna project, which is currently being built on the site of a former brickyard that was founded in the 17th century, located in the picturesque spa town of Třeboň. Part of a UNESCO biosphere reserve, it lies in the middle of a romantic landscape, ideal for cyclists, fishermen, and lovers of wellness and relaxation. The apartment is suitable for permanent or recreational living as well as for investment purposes. Estimated completion date in September of 2026.

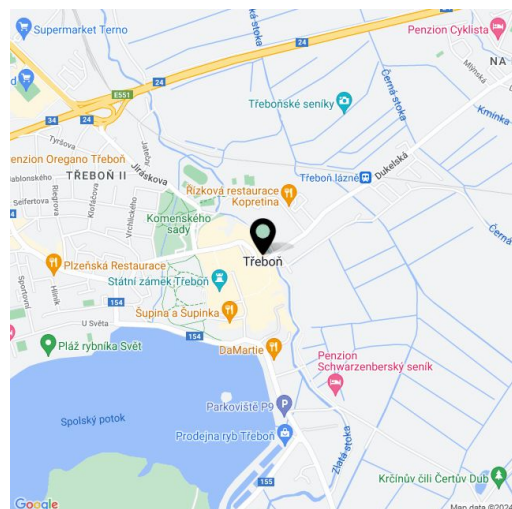
The area of the 4th floor apartment will consist of a living space with a preparation for a kitchen, 2 bedrooms, a bathroom, a separate toilet, and a foyer. The living room will have access to a large south-facing terrace connected to the garden.

The facilities include **recuperation, underfloor heating**, large-format plastic windows with triple-glazed panes, quality vinyl floors, a security entrance door, **large-format tiles** in the bathroom, and **Grohe** sanitary ware in the modern dark shade of **Hard Graphite**. It is necessary to purchase a **parking space and a cellar storage unit**.

The Nová Cihelna residential project is located in a **quiet part of Třeboň**; it will be within walking distance of **the Aurora Spa or the beaches of Svět pond**. You can easily get to the uniquely preserved **historic core** of the town on foot or by bike. With a **rich spa tradition and lively food scene**, it's located in one of the most sought-after recreational places in the Czech Republic, excellently accessible by car, for example, via the D3 highway, but also by public transport (the train station is on the main railway corridor).

Floor area 79.71 m², terrace 38.23 m², garden 34.60 m².

For more information, please visit the project website www.nova-cihelna.cz.



* Area of the unit according to the Civil Code. The area consists of the sum total area of the entire unit bounded by perimeter walls.

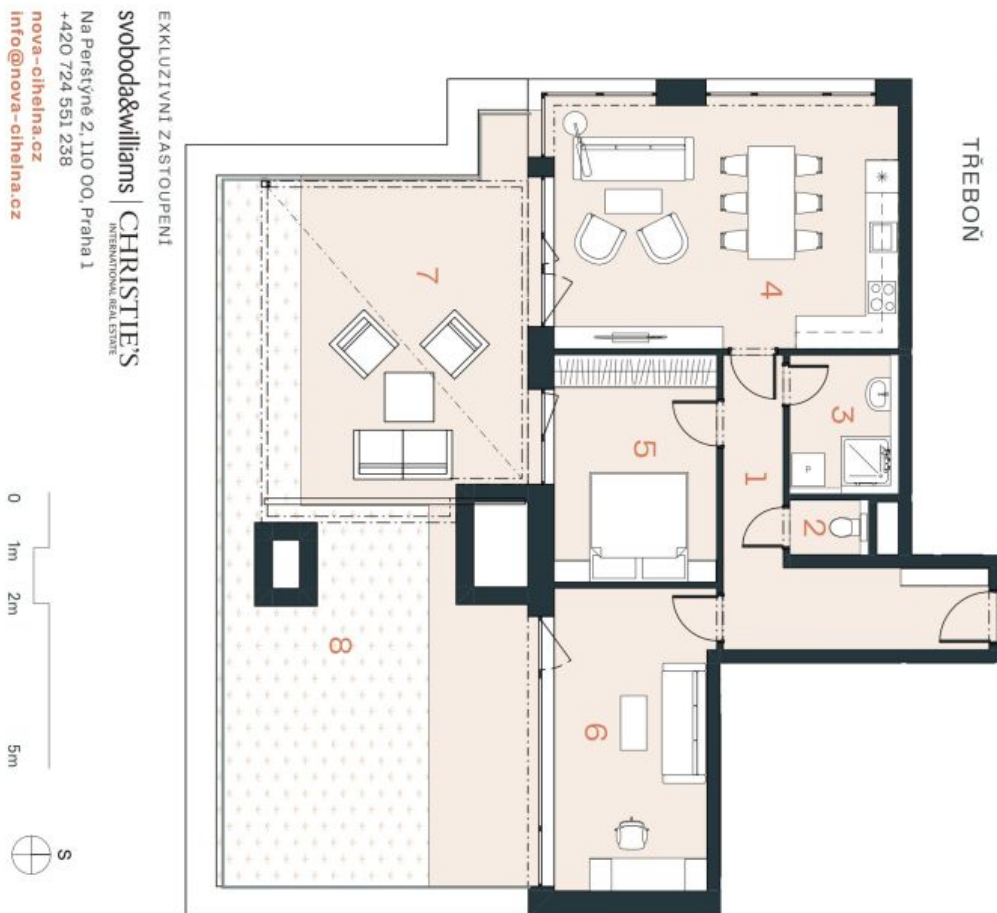


Apartment Two-bedroom (3+kk)

€ 482 918 | CZK 12 196 100

79.71 m², Jindřichův Hradec, Třeboň, Svobody

NOVÁ CIHELNA TŘEBOŇ



EKLUZIVNÍ ZASTOUPENÍ
svoboda&williams | CHRISTIE'S
INTERNATIONAL REAL ESTATE
Na Perštýně 2, 110 00, Praha 1
+420 724 551 238
nova-cihelna.cz
info@nova-cihelna.cz



JEDNOTKA	5,77
DISPOZICE	3+KK
PODLAŽÍ	5.NP
Č. Místnost	m ²
1	Předsiň 12,01
2	Technická místnost 1,44
3	Koupelna 5,15
4	Obytný pokoj + KK 29,21
5	Ložnice 12,33
6	Pokoj 15,75
Užitná plocha** 75,89	
Podlahová plocha* 79,71	
7	Terasa 38,23
8	Zahrada 34,60
Celková plocha	152,54

*Projekt: Nová Cihelna, Třeboň slouží výhradně pro účel na změny. Všechny materiály a informace jsou pouze orientační. Souděním kupní ceny bytu není důvěra. Podlahová plocha bytu je včetně plochy přiček a vnitřních nosných stěn dle výšního materiálu 3666/2013 Sb.
**Užitná plocha je včetně instalovaných předstěn bytu.