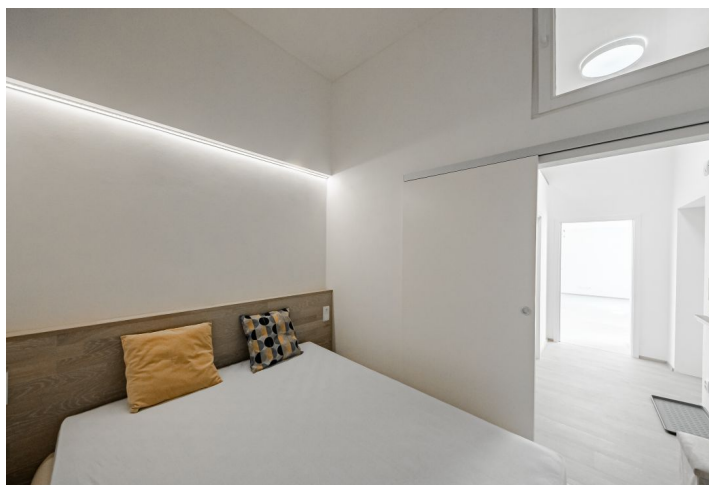
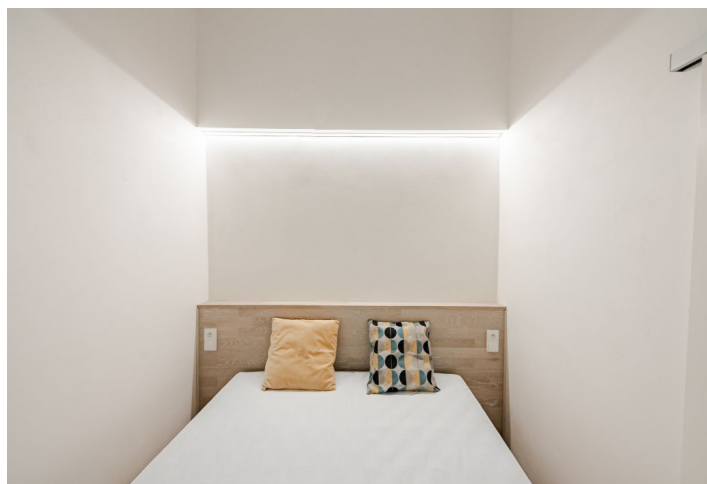




## Apartment One-bedroom (2+kk)

Rented

42 m<sup>2</sup>, Prague 1, Nové Město, Pštrossova





## Apartment One-bedroom (2+kk)

Rented

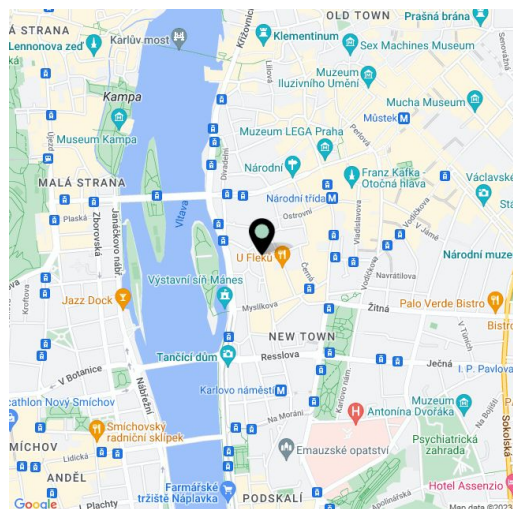
42 m<sup>2</sup>, Prague 1, Nové Město, Pštrossova

Total area	42 m <sup>2</sup>
Parking	-
Cellar	Yes
Service price	Monthly deposit for services, water, and heating: CZK 4,000. Electricity is billed separately.
Reference number	101871
Available from	Immediately

This newly refurbished, furnished 1-bedroom apartment is on the third floor of a well-maintained traditional residential building with an elevator, nicely located on a quiet street in the historic center of Prague, one block from the Vltava riverbank and the National Theater. Just a minutes' walk from trams, a few min. from the Karlovo náměstí metro station, Žofín Island, and the Mánes Exhibition Hall, with full amenities in the neighborhood.

The bright, quiet apartment includes a living room with a fully fitted open plan kitchen and a built-in sleeping gallery, a small windowless room currently furnished as a bedroom (with a built-in wardrobe), a shower room with a toilet, a utility room, and an entrance hall.

**Hardwood floors**, tiles, central heating, washer, dryer, dishwasher, induction cooktop, storage space above the bathroom, **cellar**.



\* Area of the unit according to the Civil Code. The area consists of the sum total area of the entire unit bounded by perimeter walls.