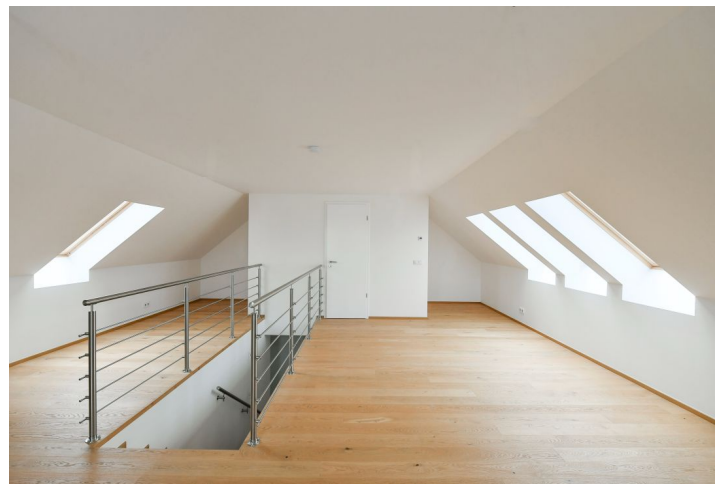




## House Five-bedroom (6+kk)

Rented

182 m<sup>2</sup>, Prague 10, Královice, Pešíkova





## House Five-bedroom (6+kk)

**Rented**182 m<sup>2</sup>, Prague 10, Královice, Pešíkova

Plot	544 m <sup>2</sup>
Foot print	85 m <sup>2</sup>
Garden	459 m <sup>2</sup>
Parking	Two parking spaces on the plot.
Cellar	-
Service price	Monthly deposit for water and garbage disposal: CZK 3,000. Gas and electricity are billed separately.
PENB	B
Reference number	101897
Available from	Immediately

This brand new unfurnished semidetached house with a large gallery and a garden is in the immediate vicinity of the natural park by the Rokytká Stream in the Prague district of Královice. Boasting a rich history, there used to be a Slavic fortified settlement in the area, and the Gothic Church of St. Margaret and a medieval fortress have been preserved. There are good amenities in the area including a tennis hall and a playground, plus several ponds and bike trails. Transport connections are provided by buses with links to the Depo Hostivař metro station (line A).

The ground floor of the house includes a living room with a fully fitted open plan kitchen and access to the **terrace/garden**, a guest bedroom also with access to the terrace, a utility room, a toilet, and an entrance hall with a built-in wardrobe. The first floor offers three bedrooms, a bathroom (bathtub), and a separate toilet. The second floor features an open attic **gallery** and a bathroom (walk-in shower, toilet).

**Hardwood floors**, tiles, automatic exterior blinds, heat pump, underfloor heating, dishwasher, induction cooktop, microwave oven, garden house. **Two parking spaces** on the plot are available.

