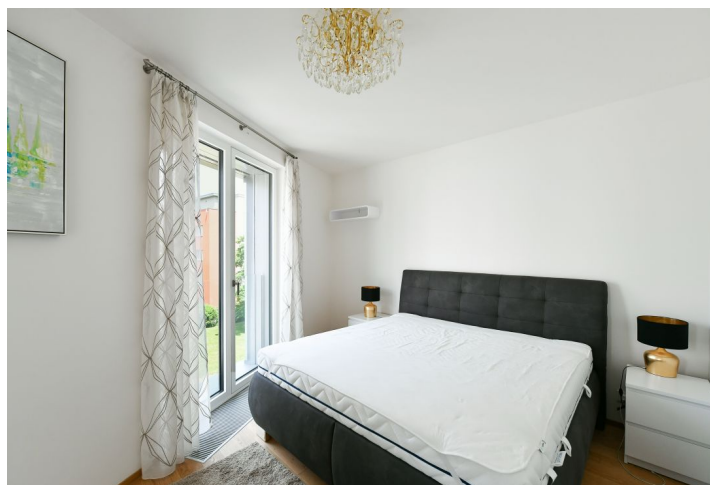




Apartment Two-bedroom (3+kk)

Rented

85.7 m², Prague 4, Michle, Hodonínská





Apartment Two-bedroom (3+kk)

Rented

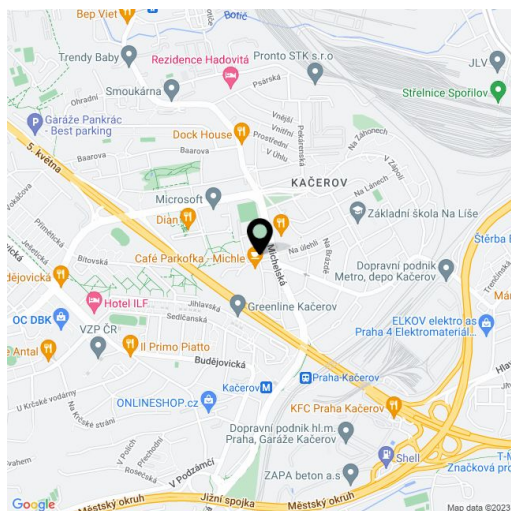
85.7 m², Prague 4, Michle, Hodonínská

Total area	93 m ²
Floor area*	86 m ²
Loggia	7 m ²
Parking	Garage parking.
Garage	Yes
Cellar	Yes
Service price	Monthly deposit for services, water, and heating: CZK 6,500. Electricity is billed separately.
PENB	G
Reference number	101925
Available from	Immediately

This brand new furnished apartment for rent with 2 bathrooms and an enclosed balcony is on the second floor of the newly built Oliva Residence with underground parking. Conveniently located on the edge of a quiet residential neighborhood in Michle, which offers a full range of amenities and services, in the vicinity of the Prague 4 commercial/office center, near the BB Centrum and Brumlovka multipurpose centers. Within easy reach of the Budějovická and Pankrác metro stations with quick access to the city center.

The interior features a living room with a fully fitted open plan kitchen and access to the **enclosed balcony**, 2 bedrooms with en-suite bathrooms (walk-in shower, toilet/bathtub), a separate toilet, a utility room, and an entrance hall.

Hardwood floors, tiles, security entry door, automatic exterior blinds, central heating, washer/dryer, dishwasher, induction cooktop, video entry phone, cellar, barrier free access, elevator. A **garage parking** space is available at an extra fee.



* Area of the unit according to the Civil Code. The area consists of the sum total area of the entire unit bounded by perimeter walls.