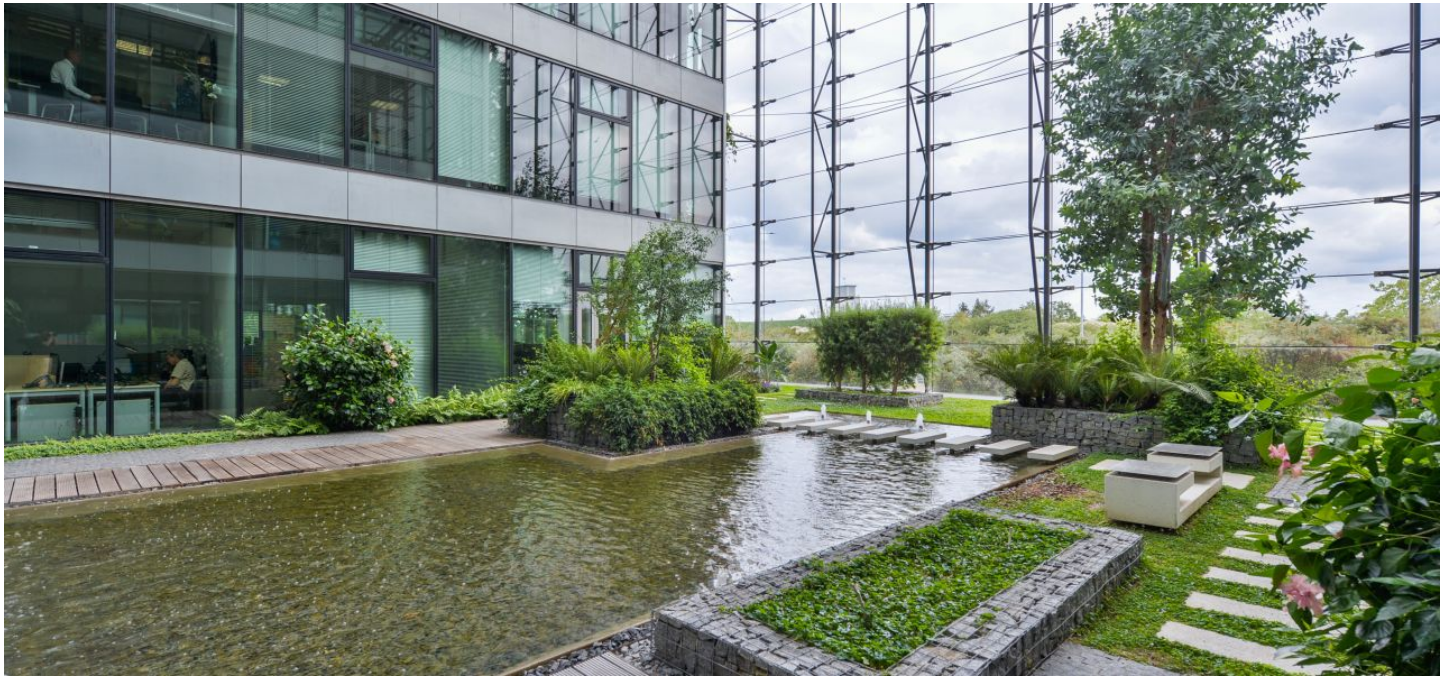




Office space

Prague 4, Chodov, V parku

€ 15.20 - 15.75 / m² | CZK 383 - 397 / m²



**Office space**

Prague 4, Chodov, V parku

€ 15.20 - 15.75 / m² | CZK 383 - 397 / m²

Service price	155 CZK monthly per m ²
Available area	7 619 m ²
Cellar	-
Parking	EUR 110 / pp / month
PENB	G
Reference number	101955

Campus-style office community business park. The site includes 12 state-of-the-art superior-standard buildings. The buildings are situated in a landscaped garden that consists of carefully selected trees, plants, and grasses and a network of streams, fountains, and pools. Atrium gardens and vestibules connect each building with the outside garden and create a unique office environment.

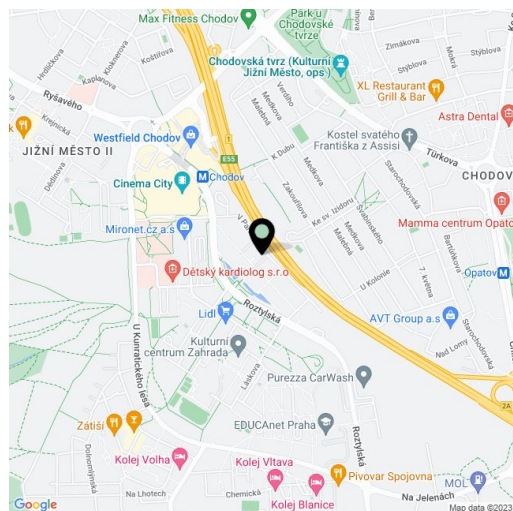
Location:

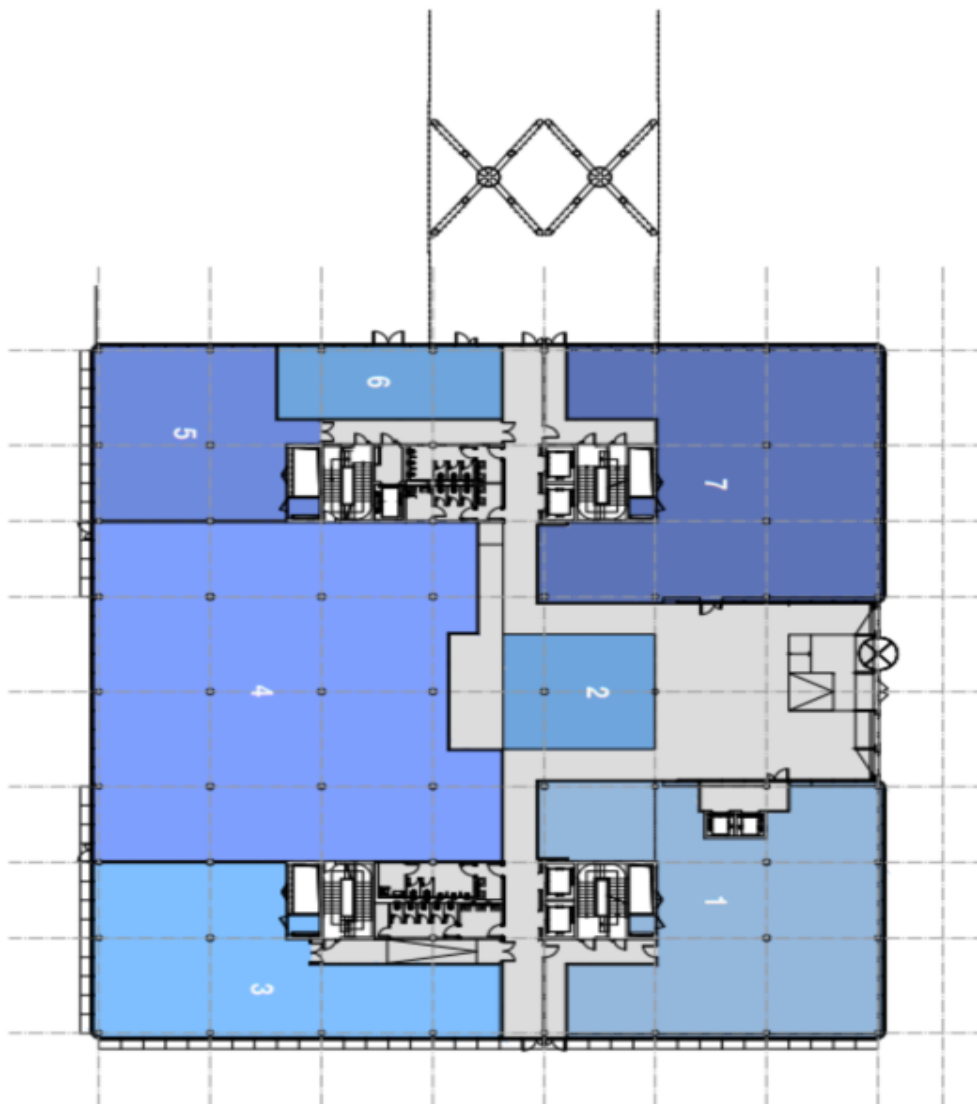
The project is situated in Prague 4—the Czech capital's fastest growing big business and retail destination—adjacent to the Prague-Budapest-Vienna highway and 50 m from the Chodov metro station (line C) and transportation hub. The site is also located next to one of Prague's most ambitious retail-entertainment projects: the Chodov shopping center that forms an integral part of this vibrant new city quarter.

Features and Services:

- High-speed broadband fiber optic connections
- Shared lobby with a reception
- 24/7 access
- High-speed and service
- Elevators
- Secured networks
- Air conditioning
- Raised floors
- Lighting

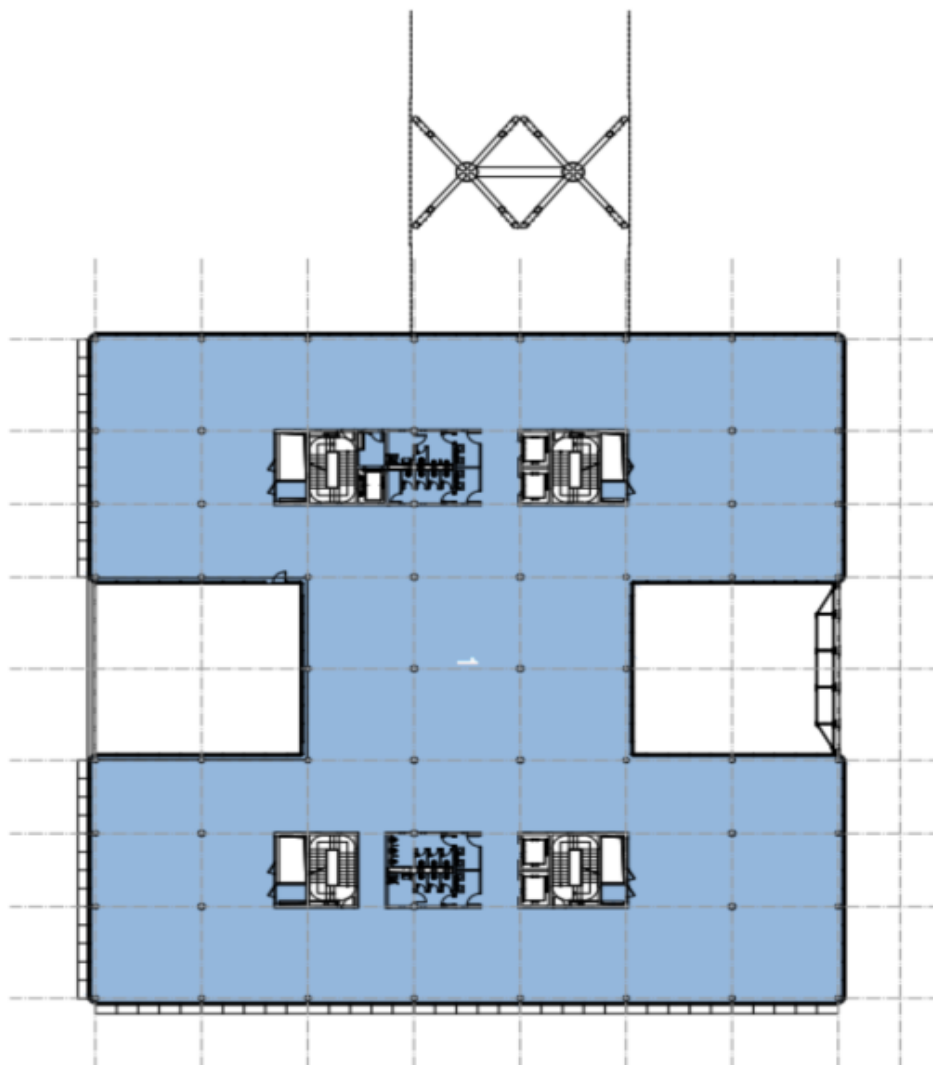
Rental and service charges listed without VAT. Lessee pays no commission.



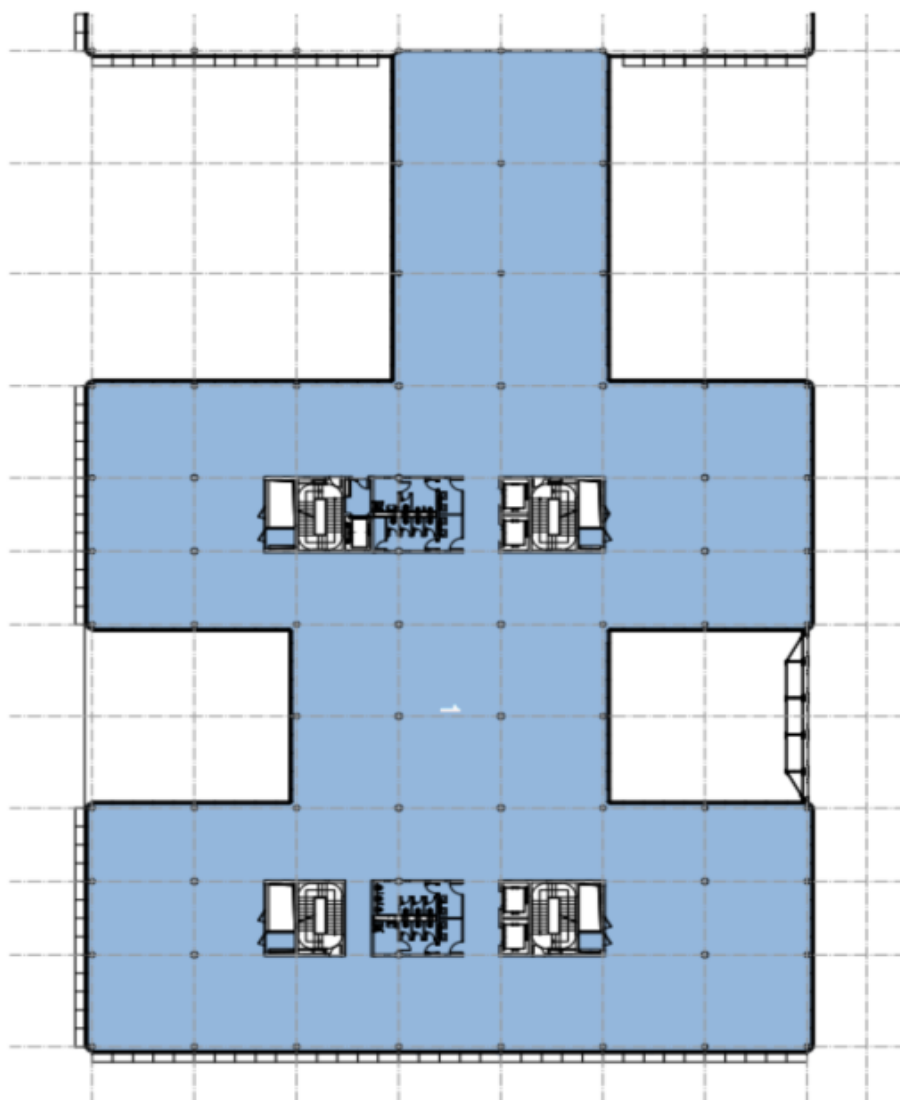


Building 07

Unit	Size
1	399 m ²
2	104 m ²
3	289 m ²
4	778 m ²
5	197 m ²
6	94 m ²
7	423 m ²



Building 07	
1st Floor (2NP)	
Unit	Size
1	2 447 m ²



Building 07	
Unit	Size
1	2 888 m ²