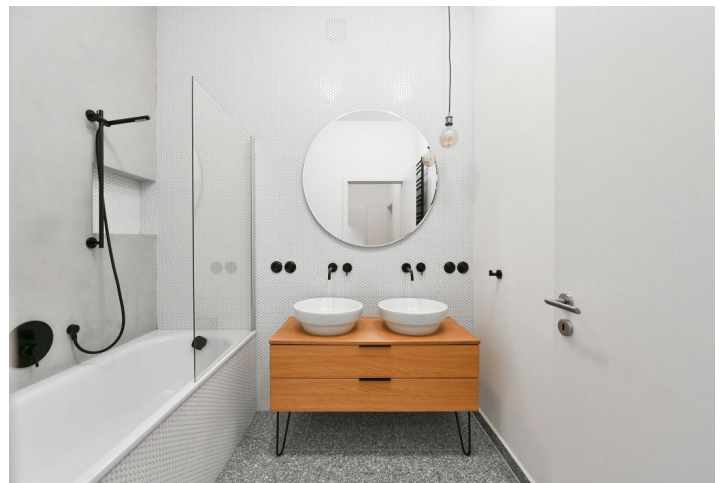




Apartment Two-bedroom (3+kk)

Rented

82.3 m², Prague 5, Smíchov, Lidická





Apartment Two-bedroom (3+kk)

Rented

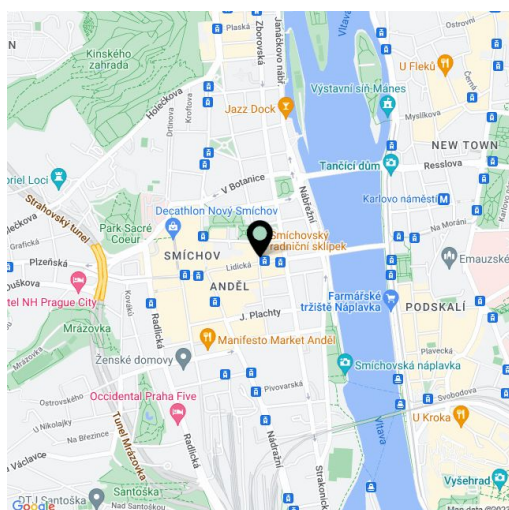
82.3 m², Prague 5, Smíchov, Lidická

Total area	87 m ²
Floor area*	82 m ²
Terrace	5 m ²
Parking	-
Cellar	Yes
Service price	Monthly deposit for services, water, heating, and electricity: CZK 6,500.
PENB	Not required
Reference number	102031
Available from	Immediately

This unfurnished apartment with a terrace is situated on the 3rd floor of a completely renovated historic building with courtyard terraces and an elevator, in close vicinity of the Vltava riverbank. Boasting very quick access to the city center—just a minute's walk to the Anděl metro station—the location offers full amenities and services within immediate reach, incl. the Nový Smíchov commercial and entertainment center. Conveniently located for the Na Knížecí Bus Terminal and the French School.

The interior features a living room with a fully fitted open plan kitchen and a terrace facing the quiet courtyard, 2 bedrooms with built-in wardrobes (facing the street), a bathroom with a bathtub, a separate toilet, a utility room, and an open entrance hall.

Hardwood floors, tiles, central heating, dishwasher, induction cooktop, video entry phone, cellar. Photos were taken from a similar apartment.



* Area of the unit according to the Civil Code. The area consists of the sum total area of the entire unit bounded by perimeter walls.