



House Four-bedroom (5+kk)

Rented

145 m², Praha 8, Ďáblice, Statková





House Four-bedroom (5+kk)

Rented

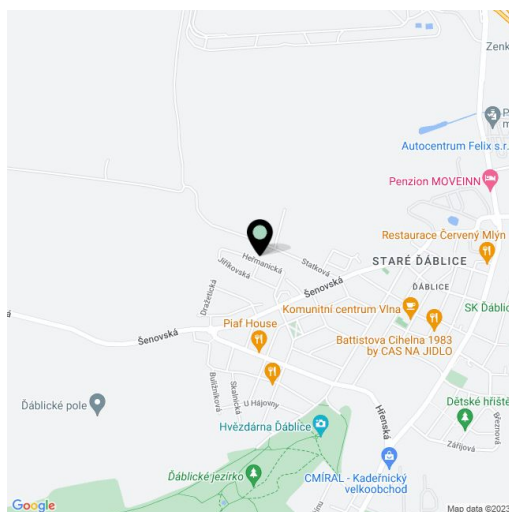
145 m², Praha 8, Ďáblice, Statková

Total area	145 m ²
Plot	243 m ²
Foot print	67 m ²
Garden	121 m ²
Floor area	130 m ²
Terrace	15 m ²
Front garden	13 m ²
Parking	Two outdoor parking spaces
Cellar	-
Service price	Utilities are billed separately.
PENB	G
Reference number	102108
Available from	Immediately

Brand new house in the Evergreen Ďáblice project. This is a newly built unfurnished 4-bedroom 2-bathroom townhouse with a garden, in a quiet "garden" neighborhood north-west of Ďáblice. The residential location offers ample greenery and amenities and services within easy reach, including the Ďáblický háj forest park with many sports and relaxation opportunities incl. hiking and bike paths, plus the nearby Āimický háj, Přátelství Park, and the riding stables in Dolní Chabry. There is a bus stop moments away, with regular connections to Ládví metro station (under 10 minutes), and it takes 7 minutes to drive to the Letňany shopping mall, and 15 minutes to Holešovice.

The ground floor features a living room with a fully fitted open plan kitchen and access to the terrace / garden, a bedroom, a toilet, a storage room, and an entrance hall. The first floor offers 3 bedrooms, a storage room, a bathroom with a walk-in shower and a toilet, and a bathroom with a bathtub and a toilet.

Laminated floating floors, tiles, triple glazed plastic windows, gas boiler. Two outdoor parking spaces are included.





House Four-bedroom (5+kk)

145 m², Praha 8, Ďáblice, Statková

Rented



RODINNÉ DŮMY & PŘÍSLUŠNÁ PRAHA 8
EVERGREEN

1.NP

013.10 | 5+kk | 130 m²

1	Vstupní hala	6,78 m ²
2	WC	1,43 m ²
3	Pokoje	10,73 m ²
4	Obývací pokoj	26,30 m ²
5	Kuchyňský kout	15,59 m ²
6	Komora	2,62 m ²

Celkem 63,44 m²

EXKLUZIVNÍ ZASTOUPENÍ
PRO PRONÁJEM

svoboda&williams | CHRISTIE'S
INTERNATIONAL REAL ESTATE

evergreen-pronajem.cz

info@evergreen-pronajem.cz

Na Zátorce 1, 160 00, Praha 6

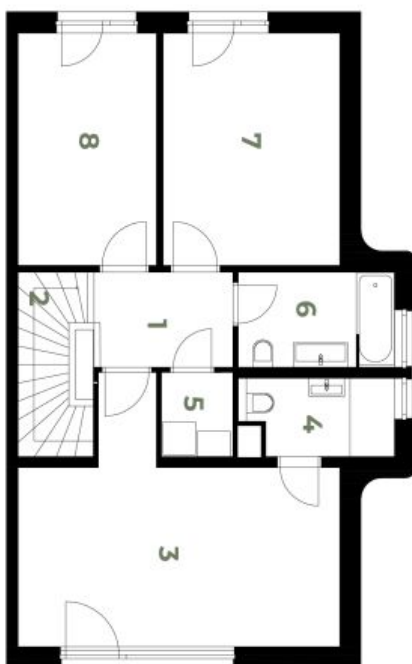
+420 257 328 281



House Four-bedroom (5+kk)

145 m², Praha 8, Ďáblice, Statková

Rented



Redirné domy k pronájmu Praha 8

2. NP

013.10 | 5+kk | 130 m²

1	Chodba	5,10 m ²
2	Schodiště	4,42 m ²
3	Ložnice	21,39 m ²
4	Koupelna	3,80 m ²
5	Komora	2,09 m ²
6	Koupelna	4,97 m ²
7	Pokoje	13,71 m ²
8	Pokoje	10,88 m ²

Celkem 66,35 m²

EXKLUZIVNÍ ZASTOUPENÍ
PRO PRONÁJEM

svoboda&williams | CHRISTIE'S
INTERNATIONAL REAL ESTATE

evergreen-pronajem.cz

info@evergreen-pronajem.cz

Na Zátorce 1, 160 00, Praha 6

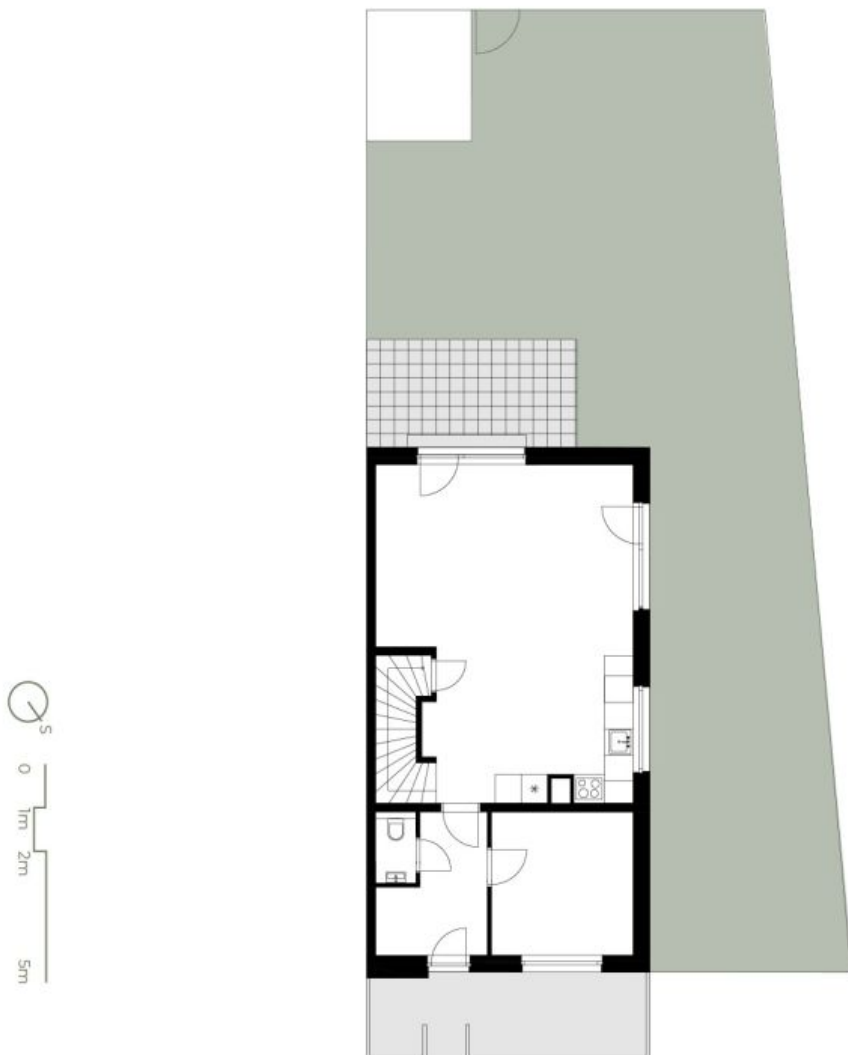
+420 257 328 281



House Four-bedroom (5+kk)

145 m², Praha 8, Ďáblice, Statková

Rented



Rodinné domy k pronájmu Praha 8

ZAHHRADA

013.10 | 5+kk | 130 m²

Předzahrádka 12,90 m²
Terasa 15,10 m²
Plocha zahrady 121,20 m²

svoboda&williams | CHRISTIE'S
INTERNATIONAL REAL ESTATE
EXKLUZIVNÍ ZASTOUPENÍ
PRO PRONÁJEM

evergreen-pronajem.cz
info@evergreen-pronajem.cz
Na Zátorce 1, 160 00, Praha 6
+420 257 328 281



House Four-bedroom (5+kk)

145 m², Praha 8, Ďáblice, Statková

Rented



EVERGREEN
Rodinné domy k pronájmu Praha 8

CELKOVÁ SITUACE

013.10 | 5+kk | 130 m²

svoboda&williams | CHRISTIE'S
INTERNATIONAL REAL ESTATE

EXKLUZIVNÍ ZASTOUPENÍ
PRO PRONÁJEM

evergreen-pronajem.cz
info@evergreen-pronajem.cz
Na Zátorce 1, 160 00, Praha 6
+420 257 328 281