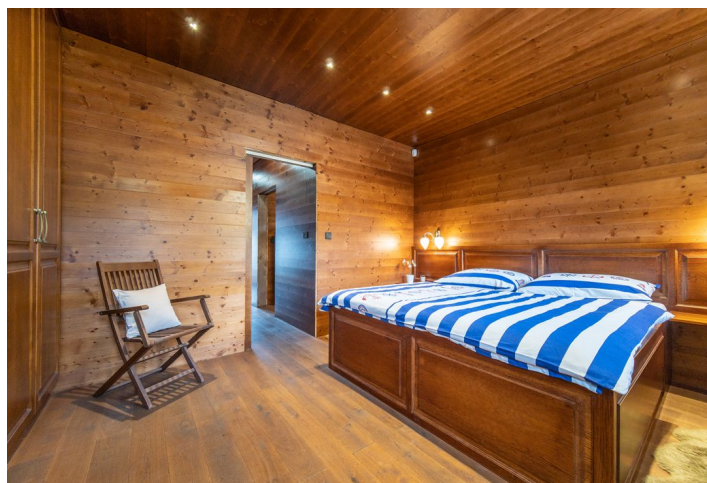




## Apartment Two-bedroom (3+kk)

100 m², Příbram, Klučenice

Ask for price





## Apartment Two-bedroom (3+kk)

[Ask for price](#)100 m<sup>2</sup>, Příbram, Klučenice

Total area	100 m <sup>2</sup>
Parking	-
Cellar	-
PENB	G
Reference number	102212

This stylish houseboat with the possibility of year-round mooring, a valid technical license, and permission to enter with 2 cars up to the mooring is located in a narrow bay of the Orlické Dam less than an hour's drive from Prague.

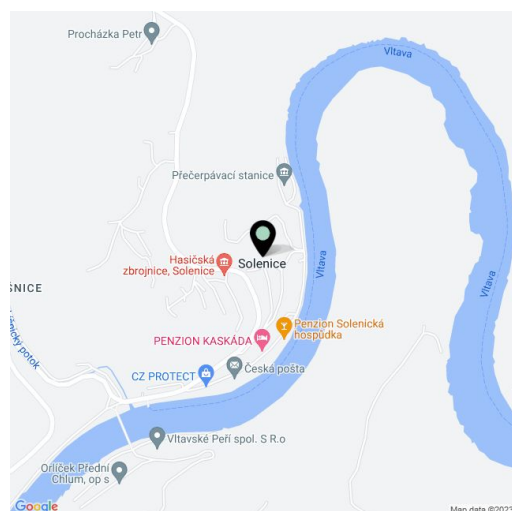
The interior consists of a living room with a kitchen and access to a **sunny deck** with **postcard views**, 2 bedrooms, a bathroom (shower, toilet). The dimensions are 20 m in length and 5 m in width, the total area is approx. **100 sq. m.**

The houseboat was built in 2018, and has a technical license from 2020-21 issued for 10 years. It is equipped with a **solar battery** and generator to power the fridge and lighting. The interior is made of **oak**, the Euro windows with **unbreakable double-glazed windows** are also made of the same wood, and the roof is titanium. The kitchen is equipped with an electric and microwave oven and a **dishwasher**. The deck has a stainless steel railing and a retractable awning. Heating is provided by a **fireplace** and a diesel boiler. The houseboat has a 700 liter utility water tank. The parking spaces are rented from an association that has a **contract** with the **Vltava Basin**. A path through the forest behind a lockable barrier leads to the mooring.

A nice place on the border of the Central Bohemian and South Bohemian regions allows **year-round enjoyment** - swimming and other water sports, mushroom picking, ice skating in winter. In the nearest village, Klučenice, there is a restaurant, an inn, a grocery store, and a post office. Other civic amenities are in Příbram. On the opposite bank of the dam stands **Orlík Castle** with an English-style **park**, but the surroundings of the bay with the houseboat are characterized by **deep, quiet, and vast forests**.

Usable area 100 m<sup>2</sup>.

It is not intended for business purposes (the houseboat cannot be rented short-term or long-term). Membership is subject to the rules of the association.



\* Area of the unit according to the Civil Code. The area consists of the sum total area of the entire unit bounded by perimeter walls.