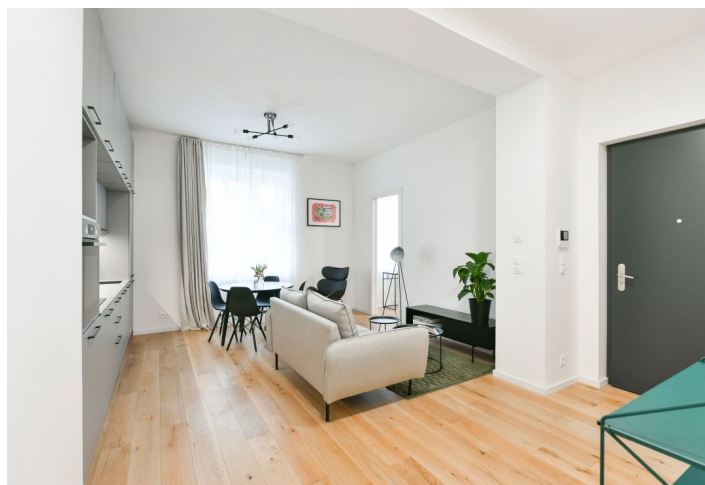




Apartment One-bedroom (2+kk)

Rented

43.7 m², Prague 6, Dejvice, Mydlářka





Apartment One-bedroom (2+kk)

Rented

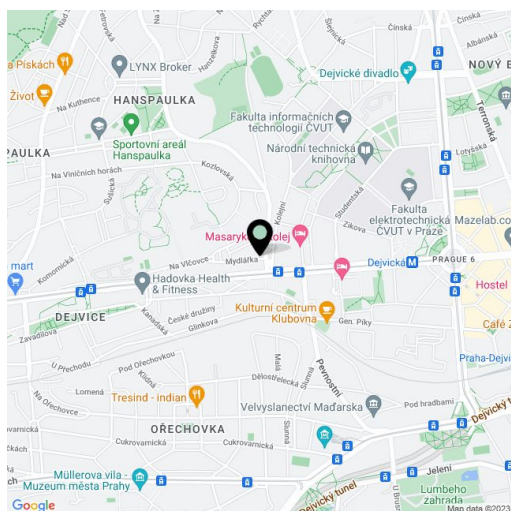
43.7 m², Prague 6, Dejvice, Mydlářka

Total area	44 m ²
Parking	-
Cellar	Yes
Service price	Monthly deposit for services and water CZK 3,000. Electricity is billed separately.
PENB	C
Reference number	102233
Available from	Immediately

This refurbished, furnished apartment is set on the ground floor of a renovated building with an elevator on the edge of the prestigious residential area of Hanspaulka, Prague 6. A great location just minutes from the Czech Technical University campus and Dejvická metro station with very quick access to the city center and full amenities in the area. The apartment is also conveniently located for the airport and numerous international schools.

The interior features a living room with a fully fitted open plan kitchen, a bedroom, a bathroom (walk-in shower, toilet), and an entrance hall.

Oak and terrazo floors, casement windows, built-in wardrobes, heat pump, underfloor heating, good insulation, dishwasher, cellar. The photographs are for illustrative purposes (taken in a different apartment in the building).



* Area of the unit according to the Civil Code. The area consists of the sum total area of the entire unit bounded by perimeter walls.