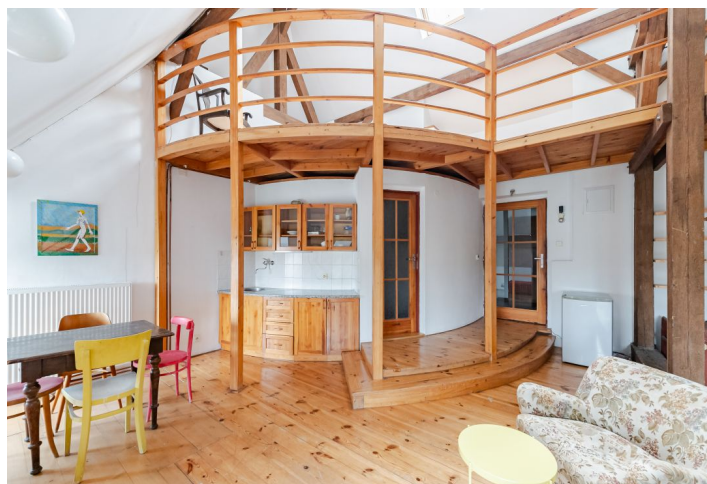




## Apartment Studio (1+kk)

Rented

63 m<sup>2</sup>, Prague 1, Josefov, Široká





## Apartment Studio (1+kk)

Rented

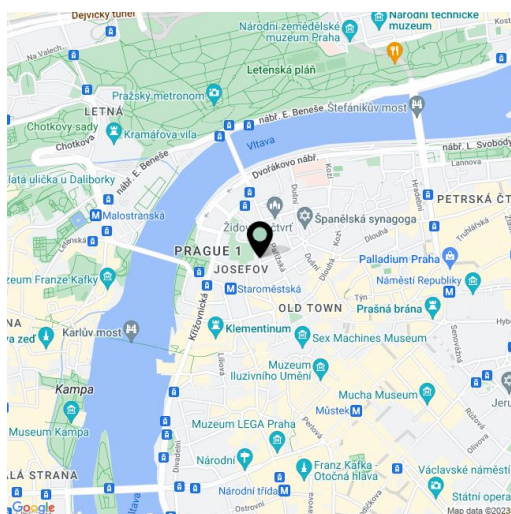
63 m<sup>2</sup>, Prague 1, Josefov, Široká

Total area	63 m <sup>2</sup>
Parking	-
Cellar	Yes
Service price	Monthly deposit for services and water CZK 2,300. Utilities are billed separately.
Reference number	102263
Available from	Immediately

This furnished split-level attic studio apartment with views of the Old Jewish Cemetery is situated on the 4th floor of a 1910 historic building that was fully refurbished and has retained many of its preserved original details. Located in the very center of historic Prague, mere steps from fashionable Pařížská Street, Old Town Square, the Vltava riverbank, and the Staroměstská metro station.

The interior features a living room with a simple open plan kitchenette, a shower bathroom with a toilet, a utility room, and an entrance hall. There is a staircase in the living room leading up to a gallery with a bedroom.

Hardwood floors, new tiles, high ceilings, new gas boiler, cellar. Mid-term rental is available at a higher rent.



\* Area of the unit according to the Civil Code. The area consists of the sum total area of the entire unit bounded by perimeter walls.