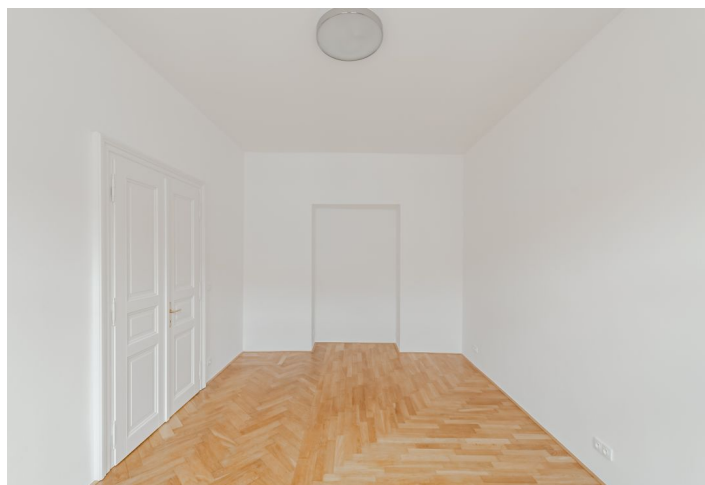
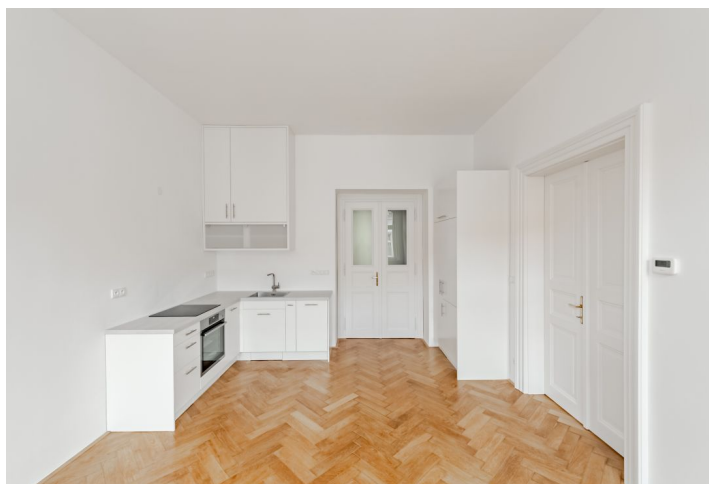




## Apartment Two-bedroom (3+kk)

Rented

77.1 m<sup>2</sup>, Prague 2, Vinohrady, Varšavská





## Apartment Two-bedroom (3+kk)

Rented

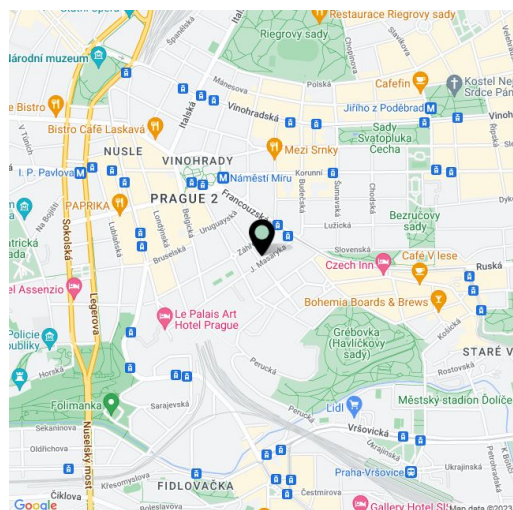
77.1 m<sup>2</sup>, Prague 2, Vinohrady, Varšavská

Total area	77 m <sup>2</sup>
Parking	Garage parking near by.
Garage	Yes
Cellar	-
Service price	Monthly deposit for services and water: CZK 3,000. Electricity is billed separately.
PENB	C
Reference number	102402
Available from	Immediately

This newly refurbished unfurnished apartment is on the 4th floor of a well-maintained traditional building with an elevator. Wonderfully located on a quiet street in a residential neighborhood of tree-lined streets and parks, sidewalk cafes, restaurants, bars, etc. with a great atmosphere and Havlíčkovy Sady Park just down the street. Situated only a few min. walk from Náměstí Míru Square with a metro station and multiple tram links, only a short walk to the city center.

The interior features a living room with a fully fitted open plan kitchen, 2 bedrooms facing the courtyard (the master bedroom has a built-in wardrobe and an en-suite toilet). There is a bathroom with a walk-in shower, a separate toilet, and an entrance hall.

Hardwood parquet floors, tiles, electric boiler, dishwasher, induction cooktop, audio entry phone, security cameras in the building, shared balcony on the mezzanine floor, chip entry to the building. A garage parking space is available near by at CZK 4,000/month.



\* Area of the unit according to the Civil Code. The area consists of the sum total area of the entire unit bounded by perimeter walls.