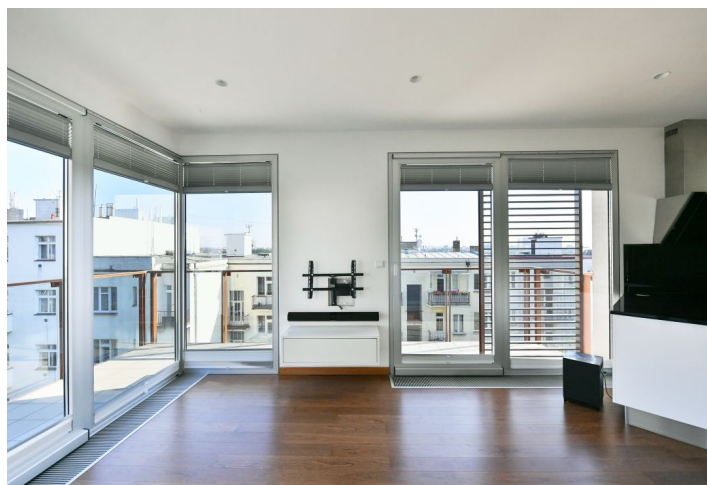




Apartment Two-bedroom (3+kk)

Rented

68.21 m², Prague 10, Vinohrady, Korunní





Apartment Two-bedroom (3+kk)

Rented

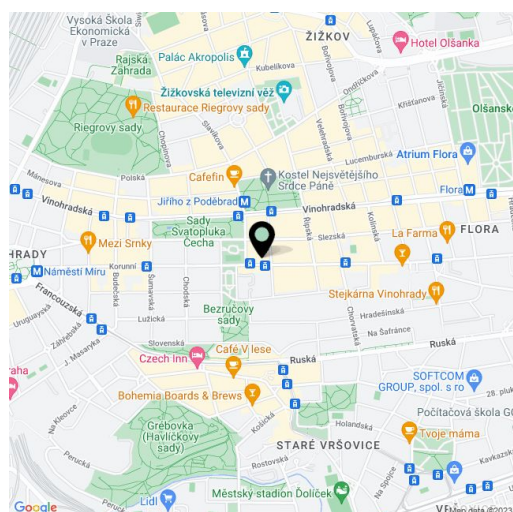
68.21 m², Prague 10, Vinohrady, Korunní

Total area	84 m ²
Floor area*	68 m ²
Terrace	16 m ²
Parking	Garage parking space.
Garage	Yes
Cellar	4 m ²
Service price	Monthly deposit for common building charges, water, and heating CZK 7,000. Electricity is billed separately.
PENB	C
Reference number	102409
Available from	Immediately

This bright unfurnished apartment with a spacious terrace and nice views of the garden and the surrounding area is on the 4th floor of a building in the Korunní dvůr residential complex with a reception and an underground garage. Set in an attractive area in the wider city center, close to several parks and within easy reach of everything you need, at the junction of the Vinohrady, Žižkov, and Vršovice neighborhoods. A tram stop is a few steps from the residence, and the Flora metro station and Atrium Flora shopping mall and entertainment center are also within walking distance. There are many cafes, restaurants, small shops, and more in the immediate vicinity.

The apartment offers a corner living room with a terrace and an adjoining fully fitted open plan kitchen, 2 bedrooms, a bathroom, a separate toilet, and a foyer.

Hardwood floors, tiles, aluminum windows, security entry door, central heating, heated floors in the bathroom and toilet, built-in wardrobes, custom-made kitchen, large cellar. **A garage parking space** is included.



* Area of the unit according to the Civil Code. The area consists of the sum total area of the entire unit bounded by perimeter walls.



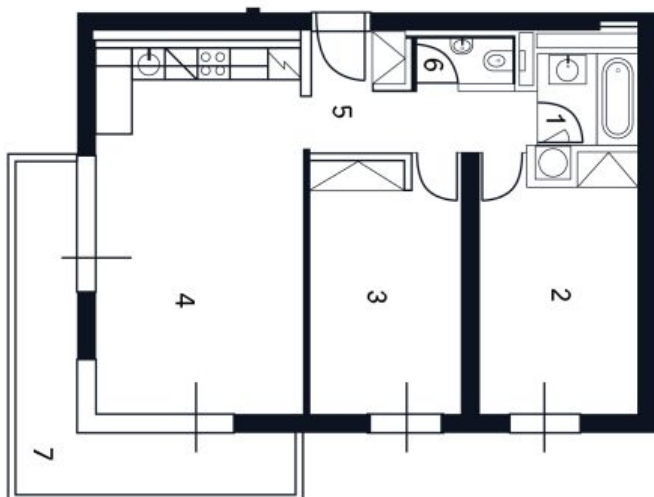
Apartment Two-bedroom (3+kk)

68.21 m², Prague 10, Vinohrady, Korunní

Rented

Korunní

1	Koupelna	4,00 m ²
2	Pokoj	14,77 m ²
3	Pokoj	14,27 m ²
4	Obývací pokoj	26,61 m ²
5	Předstíň	6,85 m ²
6	WC	1,71 m ²
7	Terasa	15,96 m ²
8	SKlep	3,70 m ²





Apartment Two-bedroom (3+kk)

Rented

68.21 m², Prague 10, Vinohrady, Korunní

