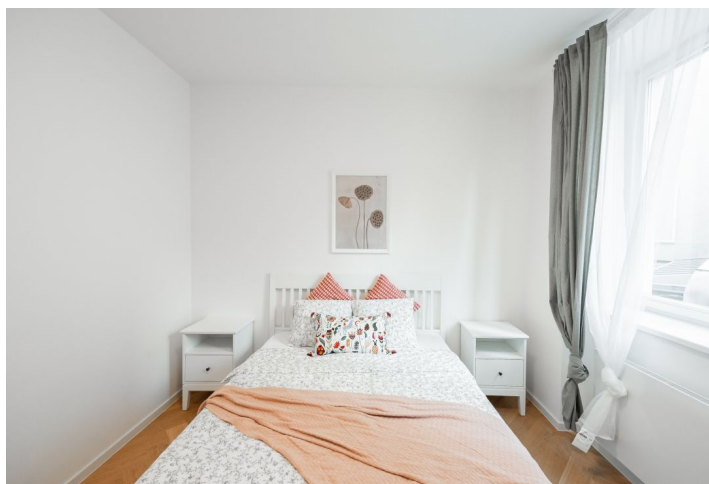




Apartment Two-bedroom (3+kk)

Rented

100 m², Prague 2, Vinohrady, Londýnská





Apartment Two-bedroom (3+kk)

Rented

100 m², Prague 2, Vinohrady, Londýnská

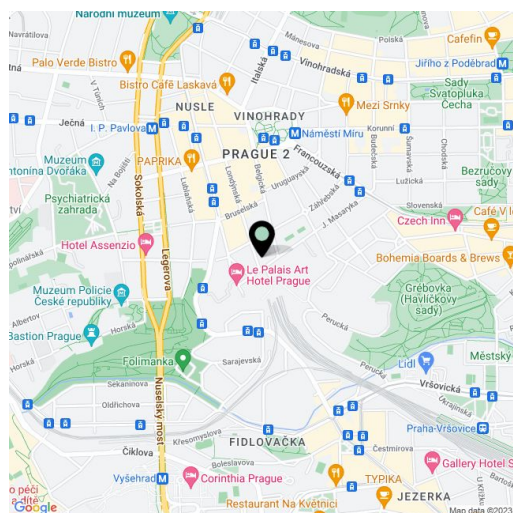
Total area	103 m ²
Floor area*	100 m ²
Balcony	3 m ²
Parking	-
Cellar	Yes
Service price	Monthly deposit for common building charges, water, and heating CZK 7,000. Electricity is billed separately - transferred to the tenant.
PENB	C
Reference number	102430
Available from	Immediately

This newly refurbished and furnished high standard 2-bedroom 2-bathroom apartment with a balcony facing the courtyard is on the first floor in a recently completed residence created through the complete reconstruction of a Functionalist building. Set in an attractive location on the border of New Town and the elegant Vinohrady district, within easy reach of a full range of services and well maintained parks. The area is distinguished by a large number of quality restaurants, cafes, and rich cultural facilities. You can comfortably walk to Náměstí Míru Square and the Grébovka, Riegrovy, and Čelakovského Sady parks. The I.P. Pavlova metro station and tram stop are practically right by the building.

The interior of the apartment offers a living room connected to a fully fitted kitchen and a dining area, 2 bedrooms, 2 bathrooms, an entrance hall, and a balcony/winter garden accessible from one of the bedrooms.

High-standard equipment, lacquered double-layer hardwood floors, large-format tiles and Graniti Fiandre tiles, Hansgrohe sanitary ware, Vitra bathroom fittings, security entry door, central heating, washer, dryer, video entry phone, cellar.

The photos show already completed units in the project.



* Area of the unit according to the Civil Code. The area consists of the sum total area of the entire unit bounded by perimeter walls.



Apartment Two-bedroom (3+kk)

Rented

100 m², Prague 2, Vinohrady, Londýnská

DISPOZICE / DISPOSITION

3+kk

PODLAŽ / FLOOR

2. NP

VÝMĚRA BYTU / FLAT AREA

100,10 m²



UPOZORNĚNÍ: Schéma podrobně představuje dispozici řešení bytu, technické vybavení kuchyní, vesařské skříně, kuchyňská linka včetně sporáčku a prachy nejsou součástí dodávky bytu, toto vybavení je zobrazeno pouze pro názornost. Prodávatel podává bytu je vypočtena dle nálezů vč. 356/2013 Sb. Všechny informace poskytl prodávatel v tomto dokumentu jsou nezávislé marketingové obecné povahy, které nelze vykládat jako nabídku na uzavření smlouvy ani se jich nelze domáhat.

1.1	chodba	14,50 m ²
1.2	obývací pokoj	40,36 m ²
1.3	ložnice	13,88 m ²
1.4	pokoj	15,09 m ²
1.5	koupelna	4,18 m ²
1.6	koupelna	8,39 m ²
Balkon		2,70 m ²
Plocha bytu		100,10 m ²

VÝMĚRA BYTU / FLAT AREA



PODLAŽ / FLOOR

