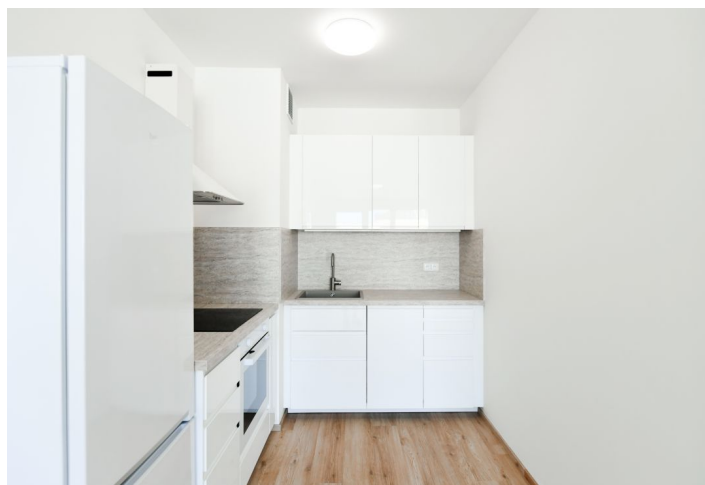




Apartment One-bedroom (2+kk)

€ 877 | CZK 22 000

56 m², Prague 5, Třebonice, Thomasova





Apartment One-bedroom (2+kk)

€ 877 | CZK 22 000

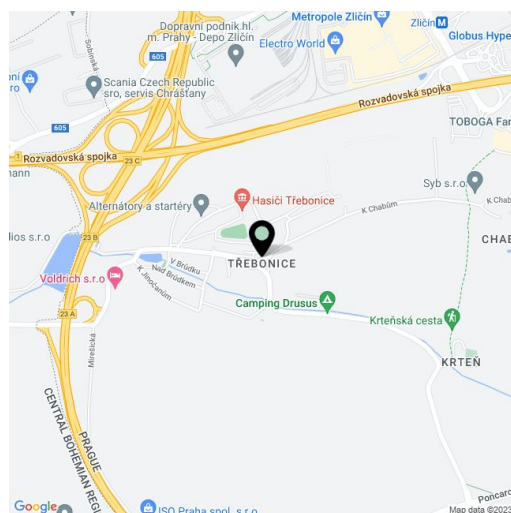
56 m², Prague 5, Třebonice, Thomasova

Total area	62 m ²
Floor area*	56 m ²
Balcony	6 m ²
Parking	-
Cellar	-
Service price	Monthly deposit for services, water, and heating: CZK 4,500. Electricity - transfer to the tenant.
PENB	C
Reference number	102438
Available from	01.05.2025

Benefiting from close proximity to the Stodůlky metro station, this unfurnished apartment with a balcony is on the fifth floor of a modern building with an elevator. Located in the Britská čtvrť residential complex with 24/7 manned security and great amenities incl. children's playgrounds, a shopping center, restaurants, a post office, medical facilities, just a min. walk to the Stodůlky metro with quick access to the city center. Within walking distance of a vast business park incl. the Vodafone, Siemens, and Komerční banka buildings, and just minutes from Ikea Zličín, Tesco, and more.

The interior features a living room with a fully fitted open plan kitchen and access to the balcony, a bedroom with a French windows, a bathroom (bathtub, toilet), a walk-in closet/storage room, and an entrance hall.

Vinyl floors, tiles, central heating, dishwasher, induction cooktop.



* Area of the unit according to the Civil Code. The area consists of the sum total area of the entire unit bounded by perimeter walls.