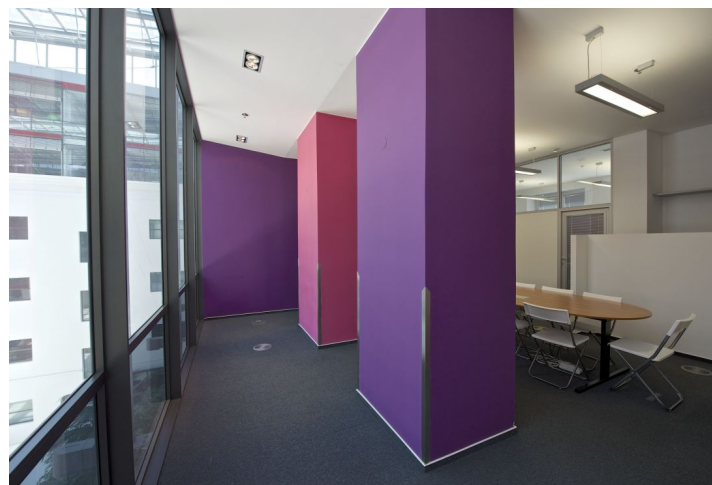
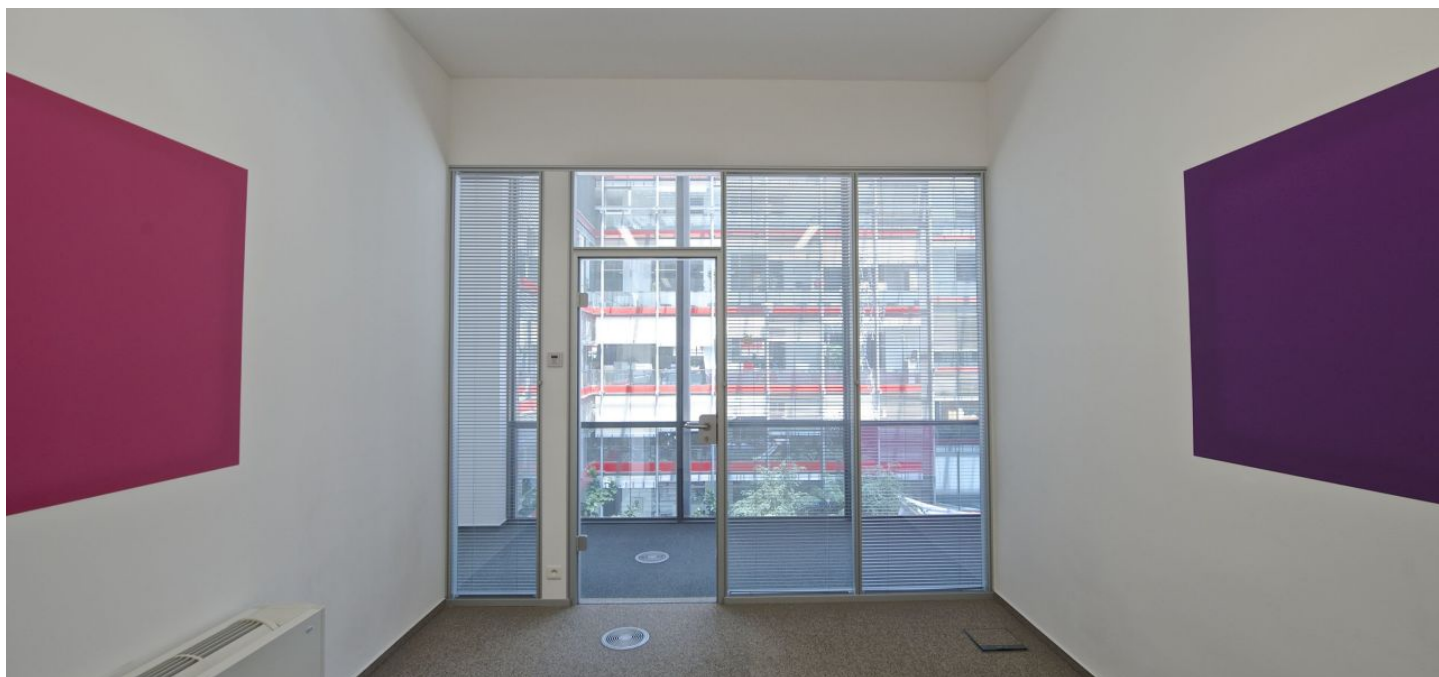




Office space

Prague 5, Smíchov, Radlická

€ 16.90 / m² | CZK 424 / m²



**Office space**

Prague 5, Smíchov, Radlická

€ 16.90 / m² | CZK 424 / m²

Service price	110 CZK monthly per m ²
Available area	210 m ²
Cellar	-
Parking	EUR 120 / ps / month
PENB	Not required
Reference number	102478

Modern administrative complex offers high quality office space for lease on the 3rd floor in Prague 5. The complex consists of a historic building that has undergone a reconstruction and a modern building with many shops and restaurants and a covered atrium in the courtyard. The building is one of the most advanced intelligent buildings in Prague with a fully integrated and centralized management system controlling security, access, lighting and energy.

Location:

The building is within walking distance of the Anděl metro station (line B) and shopping zone. The offices are very easily accessible by car and public transportation, with a number of tram stops, a bus and train station.

Features and Services:

- Central receptions in historic and modern building
- Security service 24/7
- EPS, EZS, ACS CONTROL, CCTV and intelligent building management system
- Lifts
- Magnetic card access
- Air-conditioning
- Partly openable windows
- Heavy duty carpets
- Equipped kitchenettes
- Underground parking

Images might not accurately reflect the current state of the premises.

Rental and service charges listed without VAT. Lessee pays no commission.

